

Public Relations Kyotango Magazine – July 2022

The 3rd Round of “Minna de Sasae Ai” Support Coupons Are Now Available!

Valid 7/1 (Fri.) ~ 9/30 (Fri.)

Let's Overcome this Pandemic Together!

As the coronavirus pandemic continues, the rising price of everyday goods puts a burden on our daily lives. Get a special deal with these support coupons while helping out your local businesses! Together, we can overcome these difficult times.



More details above
(Japanese)



Image of the coupons // Coupons were issued in the mail during the end of June.

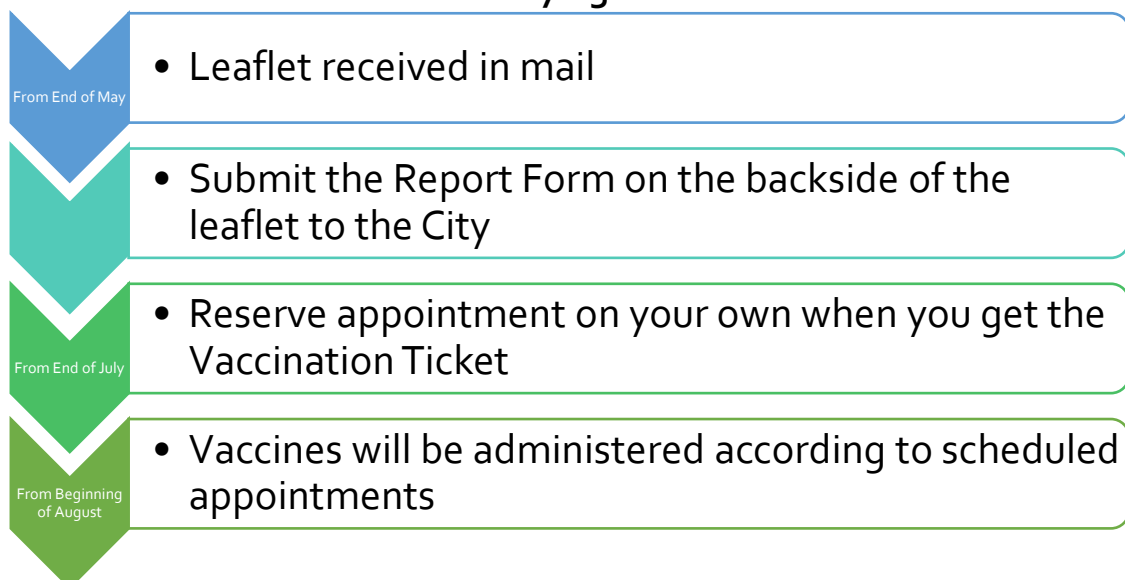
- ◇ **Period of Use**
July 1st (Fri.) ~ September 30th (Fri.)
- ◇ **Eligible Persons**
Kyotango City residents registered with the City as of June 1st, 2022 (Also includes children born before June 30th)
- ◇ **Total Number of Issued Coupons**
Two ¥500 coupons per eligible person
- ◇ **Where to Use**
Any business in Kyotango City that accepts these coupons! Look on the City's website for a full list of participating locations.

About the 4th Dose of the Coronavirus Vaccine

The National Government is now distributing the fourth dose of the coronavirus vaccine to prevent the development of severe symptoms amongst new cases. Persons over the age of 60 and persons with underlying conditions are now eligible to receive the vaccine.

- 1) The Vaccination Application has already been delivered to eligible persons over 60 years old.
- 2) The Vaccination Application for persons with underlying conditions was delivered to all eligible households on May 25th. If you did not receive the application, please call the **Novel Coronavirus Vaccination Call Center** (contact information below).

General Timeline for Persons 18~59 years old with Underlying Conditions



Ways to Submit your Form:

- 1) Bring to the Coronavirus Prevention Office or to your nearest Town Hall
- 2) Fax to the Coronavirus Prevention Office (0772-62-1156)
- 3) Email to kinkyushien@city.kyotango.lg.jp
- 4) Send by post to the Coronavirus Prevention Office (691 Sugitani, Mineyama-cho, Kyotango-shi, Kyoto-fu 〒627-0012)

If you have not received your initial (first and second dose) or booster vaccine and would like to get vaccinated, please contact the Call Center.

Novel Coronavirus Vaccination Call Center

Receiving Hours – Weekdays 9AM ~ 5PM

TEL 0772-66-3226

Education

ELSA Speak Installed into Second Year Junior High School Students' Tablets

The Kyotango City Board of Education, introduced ELSA Speak, an English speech improvement app, into second year junior high school students' curriculum to develop effective communication skills in English. Our city is the first to do so in a public junior high school in the whole country. This app automatically evaluates the students' pronunciation when they speak into a tablet, which has lessons or textbook materials preloaded into the program. Depending on results of their evaluation, the app will help students improve their pronunciation.



On May 12th, students at Kumihama Junior High School held a public class while using the app. The students remarked, "I don't want to worry about my pronunciation when I go abroad, so I will use this app over and over." This app is not only applied in the classroom, but also can be used to study with when the students bring their tablets back home.

Lecture Event

Our Hearts with Ukraine

On May 14th, the Kyotango Women's Association and the Kyotango City International Association (KIA) co-hosted a lecture about Ukraine at the Agri Center in Omiya.

At the lecture, Oleksandr Gaidin, a Ukrainian national, spoke about his home country on stage wearing his country's traditional costume. With Japanese interpretation provided by fellow Ukrainian, Denys Zhurybida, the two introduced Ukrainian history, culture, daily life, cuisine, dance, and the significance of Ukraine's flag.



Some of the participants commented that the lecture inspired them to learn more about Ukraine and sent fervent wishes for peace to return to Ukraine.

International Exchange

A New CIR in Town to Promote Globalized Education!

In order to promote international exchange and globalized education programs, the Board of Education has been making use of the Japan Exchange and Teaching Programme (JET) operated by the Council of Local Authorities and International Relations (CLAIR). The Board of Education has employed Coordinators of International Relations since 2016. In May, the Board of Education has welcomed Jake Kenneth Tembo as its new CIR. He will mainly help to plan and execute projects related to nurturing global citizens and promote globalized education programs for the young students of Kyotango.

Jake Kenneth Tembo

Nationality: Australia

Department of Employment: Schools and Education Section

G'day, people of Kyotango! My name is Jake and I just arrived in Kyotango about a month ago. I am originally from a place in Australia called Geelong, but most foreigners have never heard of it (and for good reason!), so usually I just say I'm from Melbourne! I've been studying Japanese on and off since I was in primary school, but started taking it seriously about four years ago. Outside of studying Japanese, I am big into exercise, chess, coffee, sports (Australian football, anyone?), and watching movies. If you see me around, give me a shout! *Yoroshiku!*



Gender Equality Newsletter

~For a Society where Anyone and Everyone can Live as Themselves~



Issue 2 – Taking Parental Leave, Without Regrets!

Kickstarting our New Paternal Leave Promotion Project!

The City strives for a society where both men and women can be expected to take care of the house, kids, and elderly family members to attain gender equality, which is one of the Sustainable Developmental Goals. In the Paternal Leave Promotion Project, the City will hold discussions for fathers, along with lectures for both parents. By making opportunities for fathers to share their experience about paternal leave and for married partners to communicate better, we aim to have men proactively take on responsibilities at home and raising children. Plus, we will hold lectures for employers and will make a difference in the workplace. From a professional standpoint, adopting flexible ways to work and normalizing paternal leave will not only be socially beneficial, but also help acquire and retain viable talent. We also plan to issue a



Parental Leave Handbook that will serve as a guide for taking paternal leave.

Paternal Leave Promotion Project



Creating Spaces to Network

Everyone's Child, Everyone Cares



Improving Communication between
Married Couples



Improving Domestic and
Child-rearing Skills



Taking Action in the Workplace

Upcoming Events

Lecture to Improve Domestic and Child-rearing Skills for Dads:
Introduction to Making Baby Food + Discussion

Date: July 23rd (Saturday) 1PM~2:30PM

Location: Machi Machi Information Center (Free Admission,
Babysitting service available)

There will be a baby food-making demonstration and tasting and
an open discussion about fatherhood. Don't be afraid to open about your feelings and
share them with other dads!



How to Begin Discussions with your Partner

~Paint your Future as a Family~

Date: August 21st (Sunday) 10AM~12PM

Virtual Meeting (Free Admission)

A lecture to help you think about your partnership, your way of working, and your way of living. Recommended for married couples who have been finding a way to discuss these topics.



By the **Citizens' Affairs Section** TEL 0772-69-0210



Kyotango Challenge Day 2022

Final Result

Kyotango City Won!



National Average

45.8%

	Participants	Participation Rate
Kyotango	30,499	57.7%
Hashima	29,168	43.5%

We did it!
Our First Victory!

Evacuate to a Safe Place As Soon As Possible! Protect Yourself from Floods and Storms



Q: Who needs to evacuate?

A: People who live in areas where a disaster is very likely to occur need to evacuate.

Flood/Landslide Disaster Hazard Map

If you don't have a Disaster Hazard Map, you can get one from each Town Hall or the General Affairs Section in City Hall. The map is also posted on the City's website.

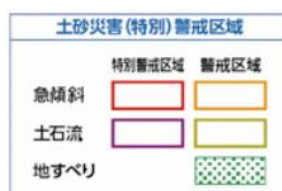
[Details here>>](#)



Check Where your House is on the Disaster Hazard Map!

The Disaster Hazard Map shows the areas at risk of being affected by flooding or landslides caused by heavy rain.

Areas at risk of flooding are shaded in and the different colors indicate predicted water levels when the most extreme rainfall inundates







Q: When do I Evacuate?


A: The City will issue an evacuation order and other Evacuation Information and have people calling out and guiding you to evacuate. So, please look at the figure below and take the appropriate actions.

Evacuation information will be broadcasted over the citywide emergency PA system in Japanese. Please follow the Kyotango City International Association's Facebook Page for Evacuation/Emergency Information (information is published in English, Chinese, Vietnamese, Thai, and Tagalog). However, in some cases, you may need to evacuate before the city

releases any evacuation information depending on the conditions in your area.

<p>Warning Level 1</p>  <p>Stock up and Prepare Evacuation Kit</p> <p>Early-stage Caution Advisory</p>	<p>Warning Level 2</p>  <p>Confirm what to do during an Evacuation and your Evacuation Routes</p> <p>Advisory Issued</p>	<p>Warning Level 3 *For people who need time</p>  <p>Seniors, disabled persons, infants and their supporters/guardians must evacuate from dangerous areas</p>	<p>Warning Level 4</p>  <p>Evacuate ASAP! Everyone must evacuate away from dangerous areas.</p> <p>Evacuation Order</p>
--	--	---	---

Warning Level 5



Take the best course of action to save your life!
Disaster is already happening.

Get to safety immediately!

- Please take a look at the Emergency Weather Information by the Japan Meteorological Agency (Warning Level 1 ~ 2) and the Evacuation Information by the City (Warning Levels 3 ~ 5), so that you can distinguish what level of emergency your situation is and evacuate on your own judgement.
- People who live in an area where a Level 3 or Level 4 Warning is issued by the city should evacuate as quickly as possible.

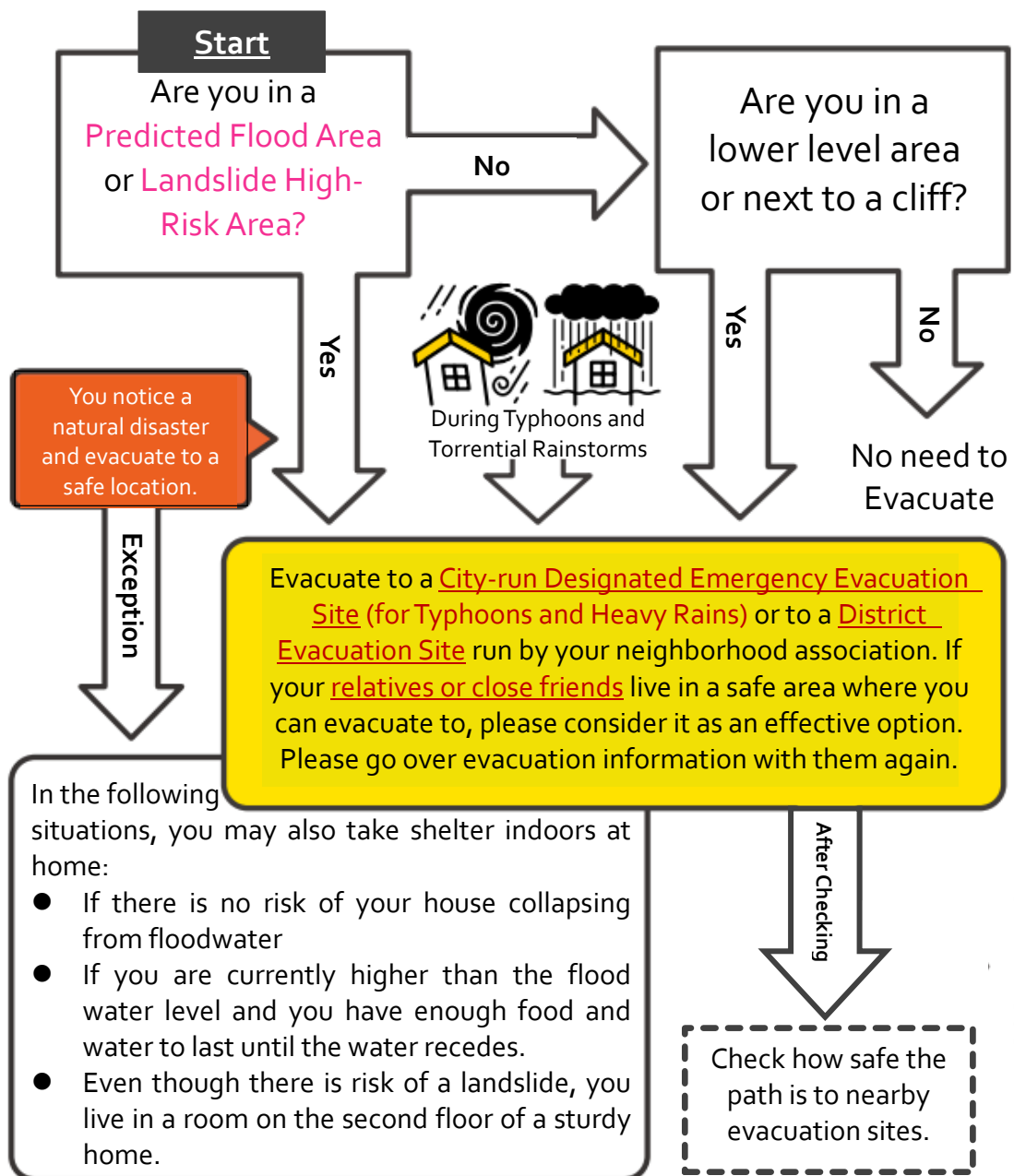
Q: Where do I Evacuate to?

A: Please evacuate to a safe place. Evacuating means to leave a dangerous place. It doesn't mean you only have to go to an evacuation site.



Check where your house is on the City's Flood and Landslide Hazard Disaster Map.

What Course of Action should you take to Evacuate?



What would happen if I was late to evacuate?

If the roads have flooded into rivers and outdoor conditions are too dangerous to evacuate to the nearest shelter, then please evacuate to the second floor of a building far away from any cliffs. Keep calm and take the best course of action to protect your own life. But, before that happens...



The longer heavy downpour continues, the more dangerous conditions will get. It is important to evacuate as early as possible without hesitation while conditions are still safe. Especially when the worst of the storm is predicted to come at night, please evacuate before it gets dark.

Be Disaster-Ready! Let's Always Prepare Beforehand!

Q: What should I do to prepare for a natural disaster?

A: To prepare for a rainstorm or an earthquake, always be communicating with your family members or people in your local community. Prepare anything that you think is necessary when disaster strikes.

Check where your Evacuation Sites are

Check and talk with others about how to get to your nearby evacuation sites and where your house is on the Disaster Hazard Map.

In the event that phone or email communication is lost, decide where to meet up and gather, so that you can move as quickly as possible.

Establish Rules for Pick-ups

In the event a disaster happens, please do not have your family members leave school or their care facility before the danger subsides. Establish rules for picking up your family members, and think of backup plans when you cannot go to pick them up.

Split Up Your Roles

In the event disaster strikes, think once more about what you can do to help the vulnerable people (babies, elderly, sick people, and disabled people) around you. As a family or a community, it is important to assign and decide roles to everyone.

Make Sure Everyone Updates their Communication Method

In the event disaster strikes, check the different ways you can communicate using your smartphone or computer in order to communicate as fast as possible.

Teach people who can't use technology well as a community or as a family.

The Difference between Evacuation Sites (*Hinan-basho*) and Emergency Shelters (*Hinan-jyo*)



Designated Emergency Evacuation Sites

City-run sites that are for securing the safety of residents in the local area in the case a disaster will happen or is happening.

Emergency Shelters (Secondary Designated Evacuation Sites)

City-run facilities that provide temporary shelter for residents until dangerous conditions subside.

Other Kinds of Evacuation Sites

Special Assistance Evacuation Sites

Facilities that give priority to those who need special accommodations when evacuating from a disaster (such as the elderly or disabled).

District Evacuation Sites

Facilities run independently by local community groups.



Items to Put in Your Survival Kit

Prepare the bare minimum to take with you when you are evacuating. Discuss what to bring with the people in your household.

1. **Handheld Flashlight** – One per person is ideal. Make sure to prepare spare batteries.
2. **Handheld Radio** – A small, lightweight radio that can tune into both AM and FM frequencies
3. **Emergency Food and Water** – Canned foods, biscuits/hard tack, or foods that don't require heat
4. **Valuables** – Extra cash (and 10 yen coins for public phone booths), your *hanko* stamp, balance book, health insurance card, a copy of important documents i.e. Residence Card, Passport, Certificate of Residence, etc.
5. **First Aid Kit** – Bandages, antibiotic gel, disinfectant, fever/cold medication, prescription medication, etc.
6. **Other items** – Helmet, spare underwear, towels, gloves, candles, lighters, a knife, tissues, etc.



Backup Supplies

These are items you should prepare if you will have to survive a few days on your own before emergency rescue teams come. Prepare as much as you can.

1. **Water** – An average adult drinks three liters of water a day. Preparing seven days-worth is ideal.
2. **Food** – Prepare over seven days-worth of canned foods or food pouches. Due to physical limitations or dietary restrictions, children or elderly evacuees may not be able to eat the food provided at the shelters, so please prepare allergen-free foods that children and the elderly can eat.
3. **Fuel and Gas** – Prepare tabletop gas stoves, extra propane canisters, and solid fire burners
4. **Tools** – Ropes, crowbar, scissors, handsaw, handjacks, shovels, etc.
5. **Other** – Emergency toilet kits, cloths, sleeping bags, plastic wrap, plastic bags, toiletries, cutlery, disposable heat packs, face masks, tarps, flashlight/lantern, extra pair of glasses, etc.

Rotate your Emergency Food Rations Regularly Keep them Fresh and Delicious

In order to prevent your emergency food from going bad or reaching their expiration date, we recommend rolling out your stock on a regular basis!

Good to Know!

Eat your emergency food at the dinner table from oldest to newest, and restock on the food that you consume from time to time. This way, you can also check on your food's expiration dates on a regular basis, and you can also supply your emergency food stock with items with shorter shelf lives!



The Medical Insurance Premium Rate for Seniors over 75 years old has been Finalized for 2022 and 2023 Fiscal Years

Content	2022-2023	2020-2021	Comparison
Per Person	¥53,420	¥53,110	+¥310
Income Rate	10.46%	9.98%	+0.48%

How to Calculate Your Insurance Premiums

Yearly Insurance Premium* = Individual Amount (¥53,420) + Income-based Amount ((Overall Income – Basic Deductions**)x10.46%)

**Maximum annual premium is ¥660,000*

***¥430,000 in 2022 (Gradually decreased if total income is more than ¥24 million)*

How to Pay your Insurance Premiums

Special Collection

Those who are receiving a yearly pension of over ¥180,000 will have their insurance premiums taken out of their pension.

Normal Collection

Those who are not eligible for Special Collection will have to pay their premiums using a Payment Slip (noufu-sho).

**For Normal Collection, you may register your bank account for withdrawal. If you are no longer eligible for Special Collection, register your bank account for withdrawal before you switch over to Normal Collection so that you don't forget to pay your insurance premiums.*

By the Health Insurance Section TEL 0772-69-0220

Let's Keep a Friendly Eye over our Elderly with Dementia Expanding our Circles of Support

What is the Guardian QR Code Sticker?

The Guardian QR Code Sticker has a numerical code and QR Code that can be scanned by a smartphone, which will show you a number you can call. For families who receive a sticker, please attach it onto your elderly family member's clothes, shoes, or bag. Help to prevent our elderly from going missing before it happens by identifying them and protect their wellbeing.

QR Code Sticker (25mm x 40mm)



Their Registered Code is written here.

When you scan the sticker with your smartphone, a list of phone contacts will show up on your screen.



If you see someone with the QR Code Sticker:

1. Call out to them from the front with a kind voice
2. Scan the QR Code and ask a nearby Japanese person to make a phone call to the phone number displayed. (The phone numbers for the Kyotango City Regional Comprehensive Support Center and Kyotango City Police Headquarters will appear on the screen. Please contact one of them.)
3. Tell them the registered numerical code on their sticker.



For more information about this project, please take a look at the website. QR Code below.



By the Longevity and Welfare Section TEL 0772-69-0330

Live119

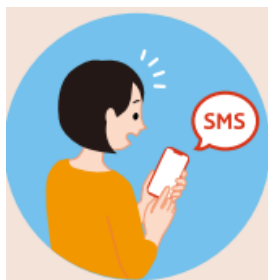
Live119 is a system that allows you to send videos to the Fire Department's command center when reporting an emergency to 119 via your smartphone. With video footage, our emergency teams can grasp the situation more accurately than with sound alone, which can guide emergency teams to take more effective actions at the scene.

Our Request to All Residents

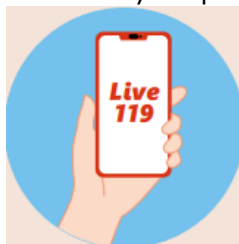
When you report to 119, there will be times when the dispatch officer will ask you to send video footage via Live119 based on their judgement. The footage will not only reduce potential damages and increase the number of lives saved during a disaster, but can also help to reduce the aftereffects of the disaster as well. Data and messaging rates will still apply.

How to Use

1. The dispatch officer will ask you to send video over Live119. Once you agree, a short text message with a URL will be sent to you. Tap on the link and access the page.



2. After agreeing to the Terms and Conditions, allow the app to have access to your microphone, camera, and location from your phone's settings.



3. Start taking video. The video will be sent to the dispatch office and the officers can check out the live situation.



Please take a look at our tutorial video on how to use the app:

<https://www.youtube.com/watch?v=Xqkjvzcz-aE>

Also, if you feel like you are in danger when recording through Live119, stop recording immediately and evacuate to a safe place.

By the **Kyotango City Fire Department Headquarters**

TEL 0772-62-0119

Your Old PET Bottles can now be Recycled into New PET Bottles!

What's Different?

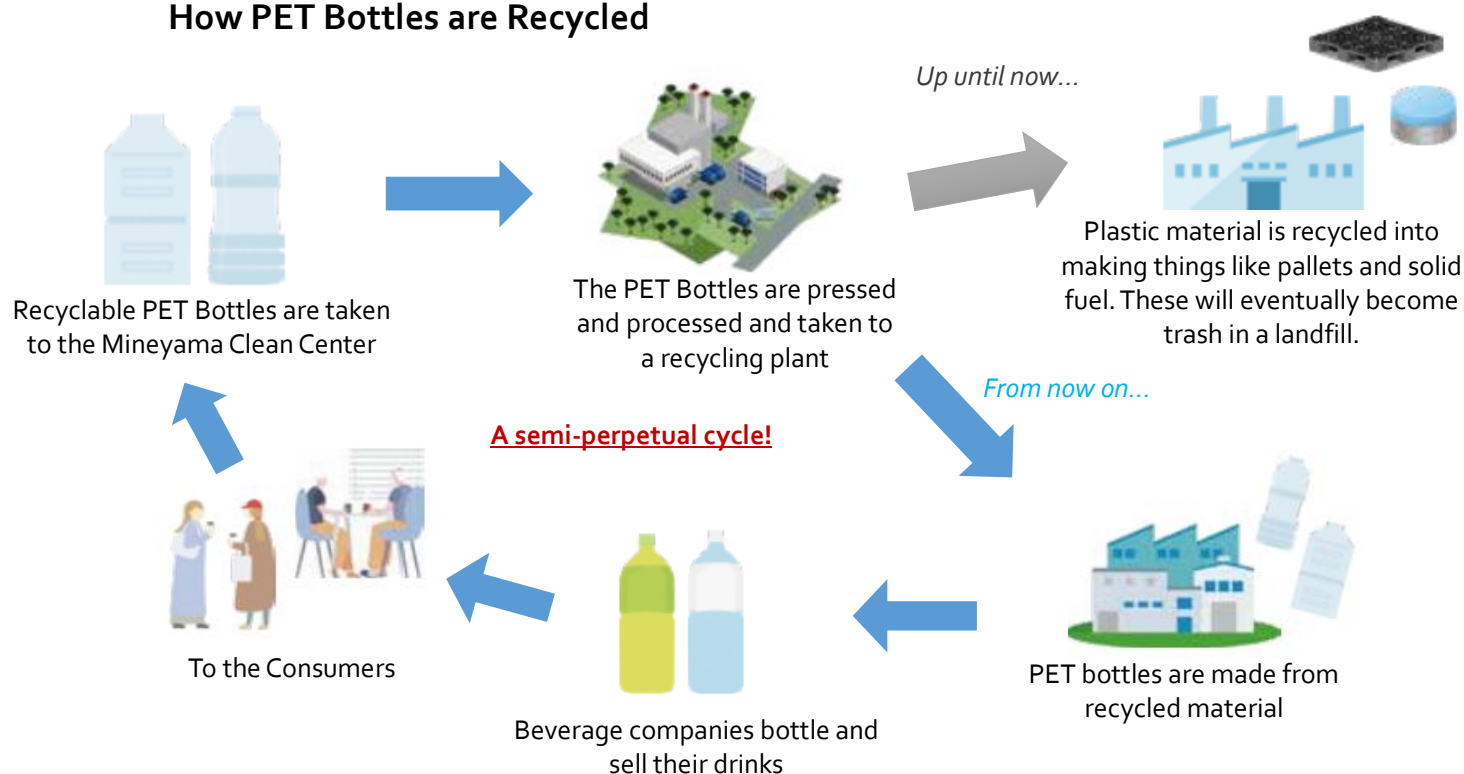
Up until now, the city has used mechanical recycling.* We have switched from mechanical recycling to chemical (feedstock) recycling, which repurposes used plastic into fresh plastic using a chemical process.

**An example of mechanical recycling: plastic that is recycled from PET bottles is turned into disposable food trays that just end up in the landfill.*

Horizontal Recycling is using the same materials many different times. Since no extra petroleum is added to the recycled PET, we can reduce the amount of CO₂ gas released into the air, which eventually leads to less greenhouse gases in the atmosphere.

By recycling horizontally, plastic bottles will not simply end up as trash.

How PET Bottles are Recycled



Please cooperate and sort out your PET bottles so we can realize our goal to become a zero-carbon city!

Kyotango City International Exchange News

The U.S. Army Japan Band Comes to Kyotango!



On May 28th, the United States Army Japan Band from Camp Zama was co-hosted by the Kyotango City International Association and the Kyogamisaki Communications Site and gave a wonderful performance at Tango Kingdom. Favorite tunes from Disney and Studio Ghibli movies resonated throughout the park from the winds and piano ensemble. According to some audience members from out of town, "Usually we don't have the opportunity to hear professional musicians, so we're very happy to listen to them today."

Photos and videos from the day of are available to view on the Kyotango City International Association's Facebook page. Please take a look!

Facebook



Population and Number of Households in Kyotango City

The numbers in the parentheses show the change in population according to the Basic Resident Registry from the end of April to the end of May. Includes foreign residents.

Population: 52,397 (-18)]

Male: 25,226 (-25)

Female: 27,171 (+7)

Number of Households: 22,985 (+27)

Population Change by Main Reasons (May)

Move-In: 128 **Move-Out:** 89

Births: 24 **Deaths:** 80

Other Reasons: -1



Get up to ¥20,000 worth of Myna-Points after Signing up for a MyNumber Card!

- ✧ Receive up to ¥5,000 in points when you reserve/apply for Myna-Points
- ✧ Receive ¥7,500 in points when you register your MyNumber Card as your Health Insurance Card (starting June 30th)
- ✧ Receive ¥7,500 in points when you register your Bank Account to receive public funds (starting June 30th)

*People who have a MyNumber Card, but didn't apply for a MyNumber Card during the first promotion on Myna-Points are eligible (also includes people who will get their MyNumber Card from now)



How to Apply

		Health Insurance Card Feature	Setting up a Bank Account to Receive Public Funds
Things you'll Need		Your MyNumber Card, four-digit password (PIN)	
			Balance Book for your account
Method	Smartphone	Apply through the MynaPortal App. Download here: iOS Android  	
	City Hall	Bring the above items you will need to a Town Hall or the Citizens' Affairs Section	

When you sign up for the Health Insurance Card feature on your MyNumber Card...

You can use your MyNumber Card at any medical facility or pharmacy that has a facial-recognition device. You can also use your Health Insurance Card just the same as before.

When you set up a bank account to receive public funds...

You don't have to fill in your bank account information or add a copy of your balance checkbook while applying to receive benefits from the National Government. Since it is an account set up to receive public funds, taxes and other money paid to the government will not be taken out of the account.

If you haven't Applied for a MyNumber Card
 You have until the **End of September** to Apply
 To Receive your Myna-Points!

Look at the Myna-Point website for the latest information!



About Applying for the Card, call the **Citizens' Affairs Section** TEL 0772-69-0210

About MynaPoints, call the **Digital Strategy Section** TEL 0772-69-0130