

Public Relations Kyotango Magazine – June 2023



Construction for the New City Hall Expansion Wing Begins in 2024



The new placements for each government office will be as follows:
Expansion Wing

- Mineyama Citizens' Bureau

- Civic Environment Department (Citizens' Section/ Life Environment Section/Tax Section/Health Insurance Section)
- Health, Longevity, and Welfare Department (Welfare Section/Disability Welfare Section/Elderly Welfare Section/Health Promotion Section (Insurance Team)/Novel Coronavirus Countermeasures Office)
- Treasurer's Office (Finance Section)
- General Affairs Department (Digital Strategy Section)
- Auditors' Office



Mineyama Town Hall (Current City Hall)

- Mayor's Office/Vice-Mayors' Offices/ City Council Office (City Council Affairs Section)
- Public Office of the Mayor (Policy and Planning Section/Hometown Promotion Section/Human Resources Section/Regional Community Promotion Section/Secretarial and Public Relations Section)
- General Affairs Department (General Affairs Section/Finance Section/Property Management Section/Bid Contract Section)
- Healthcare Department (Medical Affairs Section)
- Agriculture, Forestry, and Fisheries Department (Agriculture Promotion Section/Agriculture and Forestry Maintenance Section/Fishery Section)
- Agriculture Committee Office
- Commerce, Industry, and Tourism Department (Commerce and Industry Promotion Section/Tourism Promotion Section)
- Yoriso Shien General Support Center (Welfare Section)

Mineyama General Welfare Center

Departments related to Childcare

- Health, Longevity, and Welfare Department (Prevention Team in the Health Promotion Section)
- Board of Education (Child and Parenting Section)

Omiya Town Hall

- Director of the Board of Education
- Office of the Board of Education (General Education Affairs Section/Schools and Education Section/Lifelong Learning Section/Preservation of Cultural Properties Section)
- Construction Department (Management Section/Public Works Section/City Planning/Housing, and Construction Section)
- Water and Sewage Department (Administration and Planning Section/Facility Management Section)
- Office of the Mayor (Omiya Citizens' Bureau)

Public Spaces in the New Expansion

With the new expansion of City Hall, there will be public spaces inside and outside the City Hall buildings where anyone can visit and will be available for the public to use for various activities. There will also be a new deck located at both Mineyama Town Hall and on the second floor of the expansion that can be accessed directly.

Space 01

Minna no Hiroba – Everyone's Plaza

[Between Town Hall & the Expansion Wing]

Located in the middle between Mineyama Town Hall and the Expansion Wing where anyone and everyone can come together to socialize. Can also be used as an event space.



Space 02

Information Area [Expansion Wing, 1F]

Can be used in conjunction with Minna no Hiroba and will be an indoor space where people can post local information and event flyers.



Space 03

Citizens’ Collaborative Area [Expansion Wing, 2F]

A flexible space that can accommodate different groups of people and different needs. It will be equipped with Wi-Fi and equipment and can be used for community activities, meetings between city employees, as a coworking space, talk events, and more.



Space 04

Outdoor Terrace [Expansion Wing, 3F]

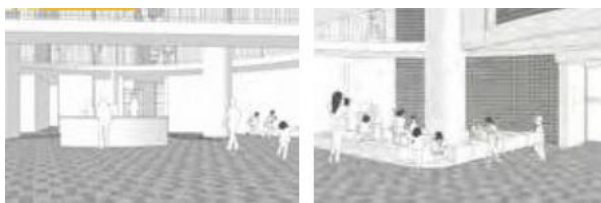
A terrace on the third floor that has a great view of Kyotango’s townscape. Along with some greenery, the terrace will provide a space where visitors can rest and relax while waiting at City Hall.



Space 05

Social Hub [Mineyama Town Hall, 1F]

A liberating space in the atrium of Mineyama Town Hall located on the first floor where guests visiting City Hall can relax.



Our Three Objectives with the New Service Counters!

Easy to Understand, Simple, and Familiar

- One-stop service counters for all of your applications and paperwork! (Service counters will be condensed to the 1st and 2nd floors)
- Breastfeeding rooms, kids’ play space, parent-friendly service booths will be available
- Booths are optimized for more comfortable and private consultations
- Shorter wait times with specialized service counters for issuing I.D. papers



Supplementary Budget

Special Child-rearing Assistance for Low-Income Families!



¥50K for Each Child



Countermeasure for the Rising Costs of Goods
Support for Low-Income Families Raising Children

2023 Fiscal Year General Supplementary Account Budget No. 2

Special Living Assistance Fund for Low-Income Families with Children

➤ 64.01 million yen

Who is Eligible?

Single-Parent Families: If you are either 1) receiving child support allowance for March 2023, 2) not receiving child support allowance for March 2023 because you are receiving public pensions or other public assistance (**application is required**), or 3) are struggling to pay for basic necessities, have difficulty managing household finances due to the rising cost of goods, and are expected to earn the same level of income as those receiving child support allowance (**application is required**).

Families with More than One Parent: If you are 1) receiving Special Relief Assistance for Low-Income Families with Children from 2022 fiscal year or 2) in a household that does not earn a taxable amount of income and household finances are greatly affected by the rising cost of goods, or are recognized as being in the same situation as households who are exempt from paying resident taxes (**application is required**).

FM Tango Celebrates its 14th Anniversary This Year!

Expanded Broadcast Range

Airwaves now Reach to Tango and Kumihama

FM Tango (79.4mHz), the non-profit local community radio station, celebrates its 14th Anniversary on June 1st. The radio station has set up new broadcasting towers in the towns of Tango and Kumihama, and have greatly expanded their listening range.

As of now, listeners can tune in to testing radio broadcasts. Please enjoy FM Tango Radio from your home or car.



KIA International Exchange News

Over 100 Kids Got to Enjoy Easter!

On April 9th, the Kyotango City International Association and U.S. Army Kyogamisaki Communications Site hosted an Easter Egg Hunt on the grass lawn in front of the Tango Cultural Center. Under a beautiful spring sky, around 100 kids had fun receiving candy from the Easter Bunny while learning English with missions hidden in plastic eggs during the Egg hunt, and enjoyed Easter-themed games at the event.



Every year, more and more families look toward this event. Joyous laughter was heard all around.

Events Calendar

6/10 (Sat.) ~ 11 (Sun.)

Kyotango Art Festival Pre-Event

Comprehensive Collection of Tanka Poetry, Japanese Calligraphy, Paintings, Photos,

and more on display!

Times: 10th – 10:00AM ~ 6:00PM

11th – 10:00AM ~ 4:00PM

Venue: Omiya Social Gymnasium

Pressed Flower/Pastel Art Experiences:

Pressed Flowers// 11th – 1:00PM ~ 3:00PM

Pastel Art// 11th – 1:00PM ~ 4:00PM

City Cultural Association Office TEL 0772-69-0630

6/18 (Sun.)

Stuffed Animal Sleepover @ Omiya Library

Listen to a picture-book read-a-loud with your favorite stuffed animal! Only the stuffed animals will be sleeping over at the library. They will have a great night-time adventure!

Time: 5:00PM~

Place: Omiya Library (within Omiya Agri Center)

Capacity: 5 groups (Lottery-based entry if there is high interest)

Registration begins May 23rd, 10:00AM

Omiya Library TEL 0772-69-0672

Every Saturday

Silver Morning Market

Fresh produce, flowers, handicrafts, and wooden goods on sale!

This month, it will be held on the 3rd, 10th, 17th, and 24th.

Time: 9:00AM ~ 11:00AM

Place: In front of the Mineyama General Welfare Center

Kyotango City Silver Human Resource Center TEL 0772-65-0052

Gender Equality Newsletter

~For a Society where Everyone can Live as Themselves~

Let's get rid of our preconceptions and prejudices.

Let's protect our individuality.

Let's protect our future

Which we all create together.



June 23rd ~ 29th is Gender Equality Week.

Regardless of gender, everyone's involvement is necessary for an equal society where everyone's individuality and strengths can be allowed to flourish. At the Gender Equality Promotion Headquarters, we aim to deepen public understanding towards equal partnerships between men and women through various initiatives that we hold every year during Gender Equality Week, which will be from June 23rd to the 29th.

For more details, scan here>



Population and Number of Households in Kyotango City

The number in the parentheses marks the difference from the end of March to the end of April. Includes foreign residents.

Total Population: 51,444 (-93)

Male: 24,781 (-57)

Female: 26,663 (-36)

Number of Households: 22,937 (+15)

Population Change by Main Factors:

Move In: 126

Move Out: 171

Births: 22

Deaths: 70

Please Help Us Get Rid of this Invasive Plant Species!

Target: Lanceleaf Tickseed (*Coreopsis lanceolata*, Japanese name *Oo-kinkei-giku*)

Characteristics:

- Large, bright yellow blooms from May through July
- Flowers can grow around 5 cm in diameter, and stems 30~70cm long
- Blooms can be single- or double-layered
- The tips of the petals are jagged, and leaves are long and tongue-shaped
- Found in clusters in yards, alongside roads, empty lots, and by streams and rivers



How to Remove:

Pull the plant out by the roots and let it dry out for 2-3 days. Shake off as much dirt as you can and dispose of it in burnable trash.

If it is hard to weed the plant out, cut it at the root before the flowers bloom. The stems will grow out again, so remember to cut them again in two months' time.



Life Environment Section TEL 0772-69-0240

Please Help us Recycle Non-Burnable Waste!

Non-burnable waste picked up from city trash stations end up tossed into landfills at the final disposal sites. Because there are many recyclable materials used in non-burnable waste, Kyotango City separates out the recyclable materials from the non-burnable waste brought directly to the final disposal sites.

We ask for your understanding and cooperation to prolong the operation of our final disposal sites and to reduce waste.

Recyclable Non-burnable Waste:

<p>Metals</p> <ul style="list-style-type: none">● Frying pans● Pots, etc. 	<p>Plastic Products</p> <ul style="list-style-type: none">● Plastic storage tanks● Clothing bins, etc. 	<p>Electronic Goods</p> <ul style="list-style-type: none">● Small household appliances● Fan heaters● Petroleum stove heaters, etc. 
---	--	---

Life Environment Section TEL 0772-69-0240

Even though that the Novel Coronavirus is a Category 5 Infectious Disease...
Let's Continue to Maintain Basic Coronavirus Countermeasures!

From May 8th, the novel coronavirus was designated as a Category 5 Infectious Disease according to the Infectious Disease Act, and is now the same category as seasonal flu and other diseases. There are no longer any restrictions on people who have contracted or come into contact with the disease and it is up to the individual to enforce countermeasures. However, that does not mean the disease is gone. We recommend that people who contract the virus to refrain from going out for five days once symptoms appear. In order to prevent future infections, we ask you to take individual action to prevent the spread of disease.

Five Basic Measures for Preventing the Spread of Disease

1. Recover at home or visit your doctor when you feel unwell or develop symptoms.
2. Wear a mask or remember coughing etiquette whenever necessary.
3. Thorough ventilation and avoiding the 3Cs (Closed spaces, Crowded places, Close-contact settings) are still effective!
4. Wash your hands as an everyday habit
5. Eat healthy and get enough exercise for healthy living

More details here >



Novel Coronavirus Countermeasures Office TEL 0772-69-0135

Once again, please check where to evacuate to and how to get there

Protect Yourself from Floods and Typhoons!

Get to Safety Ahead of Time!

Q: Who should evacuate?

A: Everyone who is in an area that is at risk during a natural disaster.

Flood and Landslide Disaster Hazard Map

If you don't have a Disaster Hazard Map, please get a copy from the General Affairs Section at Mineyama Town Hall or your nearest Town Hall. You can also access it on the City's website.

For more details, scan here>



Check on the Hazard Map if your location is at risk of disaster.

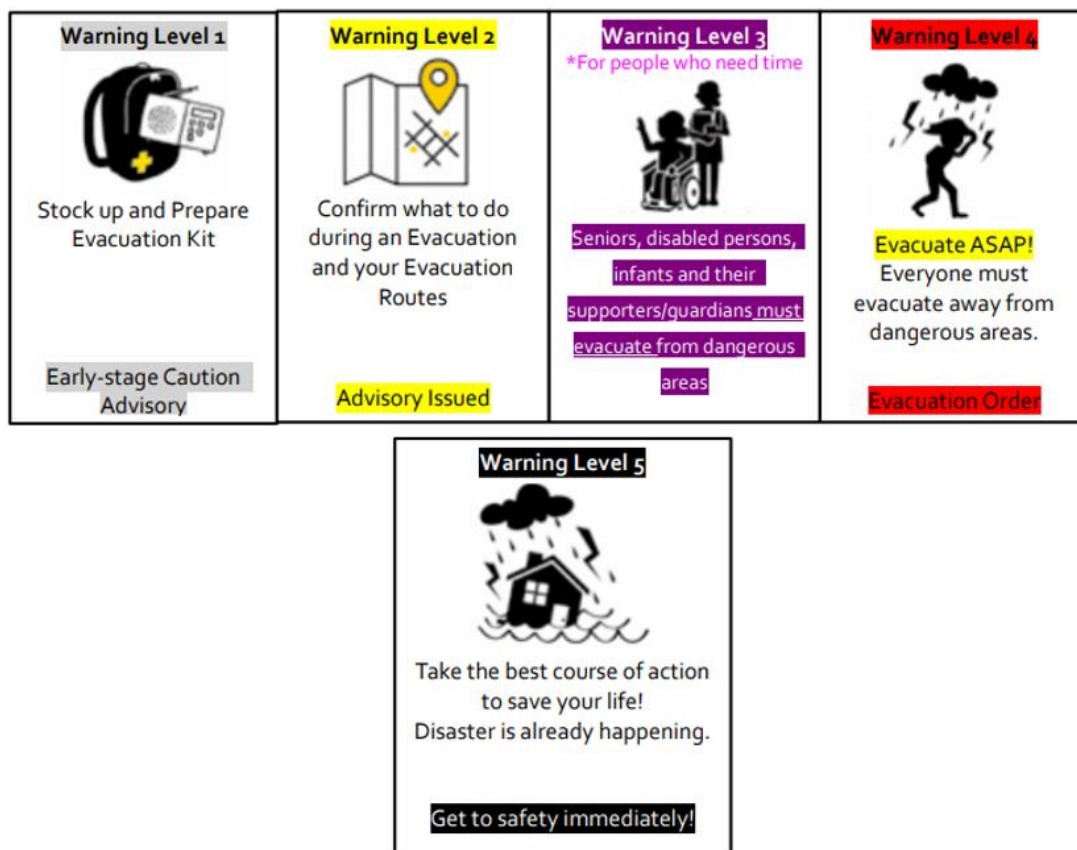
Areas that are at risk of floods or landslides during a heavy rainstorm are marked on the map.

In times of flooding due to heavy rainfall, the areas expected to flood (Predicted Severe Flood Zones) and their respective flood depth are marked with different colors. Areas that pose significant risk of bodily harm or to human life (Yellow areas: Landslide Alert Zones) and areas that pose outstanding risk of infrastructural damage (Red areas: Landslide Special Alert Zones) are separated by their degree of danger. People who are in these areas should evacuate ahead of time.



Q: When do you evacuate?

A: The City will issue evacuation orders and information to everyone, so please take the appropriate action according to the table below.



The City will issue disaster-related information over the city-wide P.A. system.

The City will determine areas that are at risk of floods or landslides based on meteorological data, water levels in the streams and rivers, water content in the soil, etc., and then will notify city residents via the P.A. system or an emergency email blast.

However, depending on the conditions around you, there may be a situation when you should not wait for orders from the City and evacuate to safety preemptively.

For information on Warning Levels, please check the disaster information from the Japan Meteorological Agency (Warning Levels 1~2) and the City (Warning Levels 3~5) so that you can decide what actions you need to take for yourself and your loved ones. If you live in a high-risk area and a Level 3 or 4 Warning has been issued from the City, please evacuate to safety as quickly as possible.

Q: Where do you evacuate to?

A: Please evacuate to somewhere safe. In Japanese, evacuation is “hi-nan,” which means to avoid danger. It does not only mean to go to an evacuation shelter.

Check where your house is on the City's Flood and Landslide Disaster Hazard Map!

Evacuation Flowchart

What actions should you take?

Start

Do you live in a **Predicted Flood Zone** or **Landslide Alert Zone**?

Yes → Be careful of disasters and evacuate to a safe place.

No → Do you live somewhere that is on lower ground or by a cliffside?

Yes → During a typhoon or severe rainfall

No → No need to evacuate

Legend

- Designated Emergency Evacuation Site
- Designated Evacuation Site
- Designated Emergency Evac. Site and Designated Evac. Site
- District Evacuation Site
- Special Accommodation Evacuation Site
- Rainfall Observatory
- River Surveillance Camera
- Emergency Rain Gauge
- Water Level Observatory
- Police Office/Box
- Fire/Emergency Dept.
- Medical Facility
- National Road
- Prefectural Road
- Other Road
- Railroad (KTR)

*The evacuation sites shown on the map are for evacuation from floods and typhoons.

Landslide (Special) Alert Zones

	Special Alert Zones	Alert Zones
Steep Inclines		
Earthflow Risk		
Landslide Risk		

Predicted Severe Flood Zones

Floodwater Depth	
10.0m~20.0m	
5.0m~9.9m	3 rd Floor and above
3.0m~4.9m	2 nd Floor and above
0.5m~2.9m	Floor Level and above
Less than 0.5m	Below Floor Level

Under the following conditions, you may shelter at home:

- If there is no risk of your building not toppling over or collapsing during a flood
- If you are in a high place above floodwater level and you have enough food supply to last until floodwaters recede
- If your home is on the second floor or above of a sturdy concrete building, even if there is a risk of a landslide

Please evacuated to a **city-run Designated Evacuation Site (Typhoon/Flood)** or a **neighborhood-run District Evacuation Site**. You may also consider evacuating to a **relative's or friend's home** if they are in a safe area. Please consult with them before disaster strikes.

Check → **Take a walk to confirm your nearby evacuation sites and the routes to get there to see how safe it is.**

Emergency/Disaster/Traffic Information
Kyoto Emergency Management Website

What if it's too late to evacuate?

If the roads have flooded into rivers during a heavy rainstorm and it is dangerous to head outside, please evacuate to a room above the second floor of your home or make a calm and rational decision for the best possible action to get yourself and your loved ones to safety.

But, before that happens...

The stronger and longer the rain falls, the more dangerous conditions will become. It is crucial to not hesitate and evacuate while conditions are still safe. Especially when rainfall is expected

to reach its peak at nighttime, please evacuate before it gets dark outside.

General Affairs Section TEL 0772-69-0140

Kyotango's Official SDGs Website is now live!

Since Kyotango was recognized as a SDGs Future City in May 2021, the City aims to promote activities and projects related to the SDGs happening in Kyotango. To do so, the City has created a website that will share and promote various SDGs-related activities and events. Information will be updated periodically, so check out the website often for more exciting news!

**SDGs stands for Sustainable Development Goals as defined by the United Nations.*



Scan below to view the website



Policy and Planning Section TEL 0772-69-0120