

Public Relations Kyotango Magazine – January 2022

Concerning the Booster Vaccine for the Novel Coronavirus (3rd Vaccination)

In line with the National Government's plan, the City will be administering the booster shot (3rd vaccination) to prevent the spread and worsening of the novel coronavirus. Residents over 65 years of age or who received their second vaccination by the end of July (excluding healthcare workers) may fill out a questionnaire to receive their booster shot. After completing the questionnaire, the City will send a notification with the appointment's time and location in the mail. For residents 64 years and below, you will receive a vaccination ticket in the mail and make appointments individually. The vaccination will come to you at no cost.

Overview of the Booster Shot

1. Target Group

- Residents 18 years and older who received their 2nd vaccination over eight months ago

2. Vaccines Used

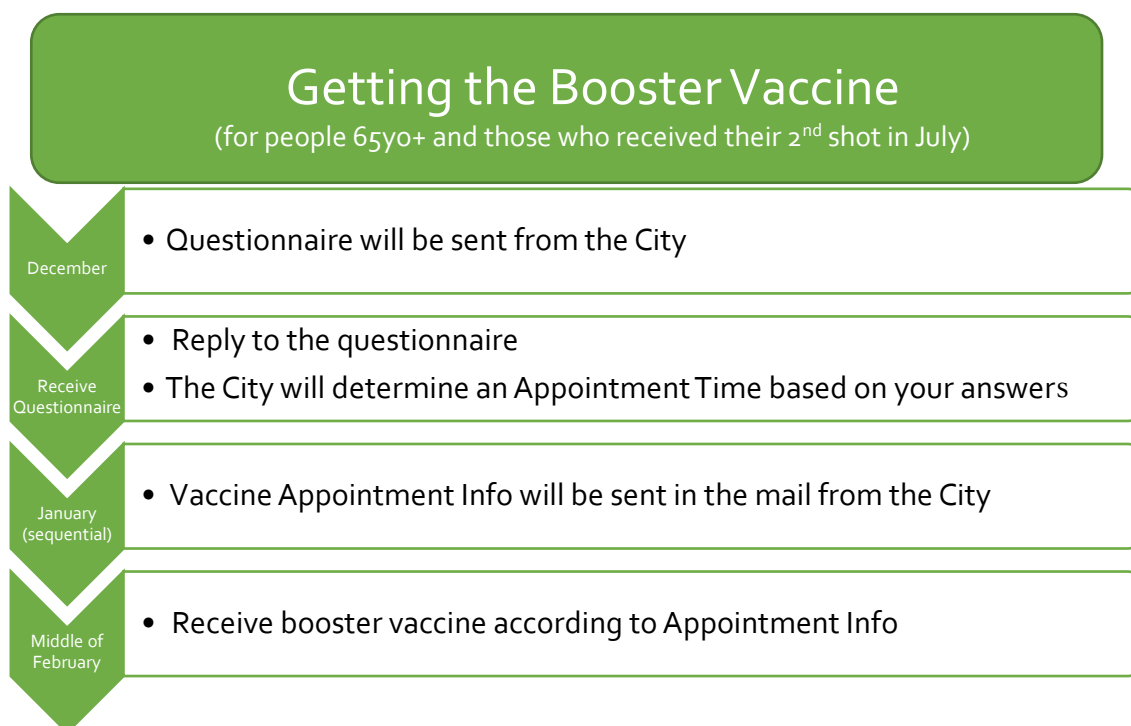
- Pfizer and Moderna Vaccines

3. Vaccination Sites

- Individual Vaccinations
(Hospitals/Medical Facilities)
- Group Vaccinations
(Yasaka Regional Community Center, Sat/Sun)

- Changes may arise due to new directions from the National Government or distribution status.
- The distributed booster vaccine will be either produced by Pfizer or Moderna.
- At the moment, when and how much of the Moderna vaccine will be distributed in Kyotango, and when and where it will be available is still to be determined.

Vaccine Target Groups	December	January	February	March onwards
Healthcare workers/People 65 and older in nursing homes	Booster Vaccination			
People who received their 2 nd shot in June	Sending Questionnaires Reply to Questionnaire	Appointment Info	Booster Vaccination	
People who received their 2 nd shot in July	Sending Questionnaires Reply to Questionnaire*	Appointment Info	Booster Vaccination	
People 64 and younger who received their 2 nd shot in August or later	*Vaccine distribution may be accelerated, so please submit your questionnaire as soon as possible			Vaccination Tickets* *Successive



People 65 years and older who received their vaccine in August and after will get their survey sequentially in the mail. If there are changes due to accelerated vaccination efforts, the city will publish information as soon as possible through flyers or other public media. (As of 12/23)

Novel Coronavirus Measures Support Pamphlet

A pamphlet that has the basic support measures from the National, Prefectural, and City Governments. Also available in each Citizen's Bureau.

Scan for the Homepage



Latest edition (12/8):

If you have not received your first or second vaccine and would like to, contact:

Novel Coronavirus Vaccination Call Center

TEL 0772-66-3226 (Weekdays 9AM ~ 5PM)

To consult about various issues concerning the novel coronavirus, contact:

Novel Coronavirus Countermeasures Office

TEL 0120-099-552 (Weekdays 8:30AM~5:15PM)

Childcare

Updating our Playdate Map!

There is a map where mommies with young kids in Kyotango can share their favorite spots to go out! At previous meetings, some parents wanted to know more places where they could take their kids. The map is available to view in the Child and Parent Comprehensive Support Center Hagu-Hagu.



By the Health Promotion Section TEL 0772-69-0350

Council Hearing

Deliberation on Plans and Concepts for Privately Contracted Wind Power Generation Projects Begins

Beginning Deliberations for Wind Power Generation Projects at the Beautiful Town Planning Council Meeting

Currently in Kyotango, there are multiple large-scale wind power generation projects that are being planned by private contractors.

At the moment, the projects are in no way guaranteed to be implemented. The projects are still at the point where their feasibility needs to be confirmed and surveyed. Concerning the environmental impact of the contractors' projects, the

contractors plan to move forward and conduct an environmental assessment that evaluates and makes estimations for surveys in accordance to the Environmental Impact Evaluation Law.



At the council meeting

At the Beautiful Town Planning Council Meeting, the City began their deliberation on the projects. The City expressed their opinion to the private contractors to consider what kind of impact the project will have on overall residential life and the environment, such as natural surroundings, living environments, scenic landscapes, noise, and potential natural disasters. The contractors must also strictly abide by the laws and deal with any opinions and unease from the local residents.

The first Council Meeting was November 11th at Kyotango City Hall in Mineyama. Mayor Nakayama asked the council that the wind power generation projects should conduct the necessary surveys and thoroughly deliberate the many effects on the overall environment as specified by law, beginning with Kyotango's natural surroundings, disaster prevention, and way of life. The mayor also requested the Council to give their necessary opinion in the occasion the City issues an official statement.

At the meeting, knowledgeable professionals in fields related to environmental impact assessments were brought in as advisors and the chiefs of the districts related to the project were invited as representatives to fortify and broaden the membership of the council.

After the initial questioning, the City explained its development in addressing the wind power generation project between the city, districts, and contractors, as well as its environmental impact assessment system. The private contractors also gave an overview of the Tango Peninsula No. 1 and No.2 Wind Power Generation Project (provisional name), as well as the Planning Phase Environmental Impact Consideration

Statement, which will be the first step in the project's environmental impact assessment. Afterwards, the council held a Q&A session and many opinions were exchanged.



Council President Miho Okutani (top) and the councilmembers (bottom)

Main Opinions towards the Contractors:

- Awareness towards the relationship between biological systems, landscapes, and the local people is shallow. They need to have a better grasp of the present situation.
- Understand and evaluate the climate and geography of the Tango Region.
- As transporting large construction vehicles will greatly affect the everyday lives of residents living near the roadsides, any surveys and plans that involve road/traffic changes need to be announced early.
- There needs to be consideration towards the effects on the local community and economy, paired with consideration for the environment.

From now, the council's reply to Mayor Nakayama will be expected after the second meeting taking place in the middle of January.

The Mt. Isanago Wind Power Generation Project (provisional name) planned for Mineyama and Omiya will have its first session of deliberation meetings from the end of January to the beginning of February.

By the Lifestyle and Environment Section TEL 0772-69-0240

Snow Season

Please Cooperate with Snow Removal!

To keep our roads safe and smooth, snow removal work will be carried out throughout this year's snow season.

Duration: Until March 15th

Conditions for Removal: Over 10cm of snow accumulation

In order for snow removal to go smoothly, please understand and cooperate with the following points:



● **Removing Snow in front of your House**

Snow pushed aside by snow removal work will build up in front of your house or workplace. Please remove the snow that could not be removed by the snowplows.

● **Check the Trees in your Garden**

The trees in your garden may stick out onto the road and obstruct snow removal work or traffic once snow builds on them. Please either cut or tie down any branches that may stick out before the snow falls.

● **Do Not Push the Snow onto the Road (Walkways and Roadways)**

When shoveling the snow in front of your home or workplace, do not push the snow onto the roadway. This will create bumps and make the roads very unsafe.

● **Do Not Park on the Side of the Road**

Parking on the side of the road will obstruct the path of snowplows and emergency vehicles

By the Management Section

TEL 0772-69-0510.

Sewer System Project

Let's Keep our Waters Clean!!

We will support your connection to the City's Sewers!

To preserve our precious water and improve our living environment, the City has equipped the current sewer system (public sewage pipes, collective drainage treatment facilities, public septic tanks). We have in place a variety of support systems for all of our city's residents to connect with these systems. We ask you to please connect with the sewer system.



Drainage Installation Advisor Deployment Project

~Consultations on Installation Work/ Free Quote~

If you live in a residence that is still not connected to the City's sewer system, we will send a Drainage Installation Advisor to come visit. The advisor will discuss with you about the construction needed to install drainage equipment and give you some advice and suggestions about costs and how to connect.

Assistance Program to Convert to a Flush-type Sewer System

~Financial Aid to connect to the Sewer System~

The City will provide aid for a portion of the drainage installation fees for residents living in already existing houses and are newly connecting to the public sewer system within three years of its establishment in your area.

Maximum Assistance offered:

General Households – ¥50,000

Senior Households – ¥200,000

Fee Reduction for Using Public Sewers

~Pay only the Basic Rate for One Year~

Once your local sewer system is put into place and you get rid of your septic tank within the first three years, you get to use the sewer system at the basic rate for one whole year when making a new connection.

The City has hired Sewage Project Popularization and Promotion Officers to encourage everyone to transition to the public sewer system.



Promotional Officers Mr. Hirata (left) and Mr. Adachi (right)

We also offer other kinds of support systems. Please feel free to inquire.

TEL 0772-69-0550
(By the Management and Planning Section)

Empty Houses
Promoting the Distribution of Empty Houses with no Owner
Currently Looking for Potential Buyers!

The City is currently looking for potential buyers for empty houses through the Inheritance Property Administrator System and is working on promoting property redistribution.

<u>About the Building</u> Location: Asamogawa District, Amino Structure: 2 Floors, Wooden Structure, Tile Roofing Size: 1 st Floor 74.68m ² , 2 nd Floor 33.96m ²	<u>Land Plot</u> Area: 220.83m ² Type: Residence
<u>Base Offer</u> : 1.5 million yen <u>Posting Period</u> : Until 2/28 (Monday) <u>How to Apply</u> : Attach the necessary documents to the application and submit it to the City Planning and Construction and Residence Section (TEL 0772-69-0530). Please inquire for more details.	



Posted House and Land Plot

More details here:



Safety
28th Communications Meeting for Safety Measures Related to U.S.
Army Kyogamisaki Communications Site Held via Letter Exchange

The 28th Communications Meeting for Safety Measures Related to the U.S Army

Kyogamisaki Communications Site was held on September 21st. Like the previous time, the meeting was conducted via letter exchange to prevent the spread of coronavirus.

Current Situation concerning the Kyogamisaki Communications Site

Previously delayed from mid-summer to late-summer, the Defense Bureau has explained that the military personnel's move-in period is currently unknown due to an extended delay to secure and hire maintenance and cafeteria staff within the Communications Site.

The Defense Bureau will report on the results from the Water Quality and Algal Distribution Survey for the ocean water around the base when they are fully compiled. In response to the City's questions about the maintenance check on the Site's septic tank and the water quality survey on the Site's waste water, the Defense Bureau said that they will work with the Americans and share information about its proper management.

From June to August of 2021, U.S. soldiers received damages in two of the four reported traffic accidents which resulted in property damage.

Welfare

A New Stage for Shop loved by Locals!

Renewed Opening for Create Shop Cri-cri

The renewal opening ceremony for Create Shop Cri-cri in Shopping Center Mine took place on November 24th to celebrate their move from the second floor to the first floor of the mall.

The shop is run by a council of three organizations from Kyotango (Yosano-umi Welfare Society, Amino Welfare Society, Kumi-no-Hama Welfare Society) and sells items made at workshops which hire and train disabled persons. At the opening ceremony, the Council President Kazuhiro Aoki (Board Director of the Yosano-umi Welfare Society) gave a fervent greeting: "Through our increased efforts to provide kind, bright customer service and consistent goods, we hope to meet everyone's large expectations and to be continued to be loved by all."

Inside the shop, a rich variety of baked goods, cloth items and ceramics made with love by the folks at the workshop, and limited-edition goods in celebration of the shop's reopening lined the shelves in a colorful array as eager customers bustled to buy their goodies.

**We've moved next to the
Center Court on the 1st Floor of
Mine!**



We are looking for
people to join our
Supporters Club!
Take a look at our
homepage →



Top: The new shop layout

*Bottom: Ribbon-cutting Ceremony
(From the right: President of Mineyama
Business Development Co. Mr. Yura,
Council President Mr. Aoki, and Mayor
Nakayama)*

Kyotango City Developmental Support Network

~Aiming for Seamless Collaboration and Support~ Series No.2

Kyotango City aims to develop a system for all children to grow up healthy and receive continual support into future. And so, we have set up the Developmental Support Network Council as a place where you can consult with related institutions.

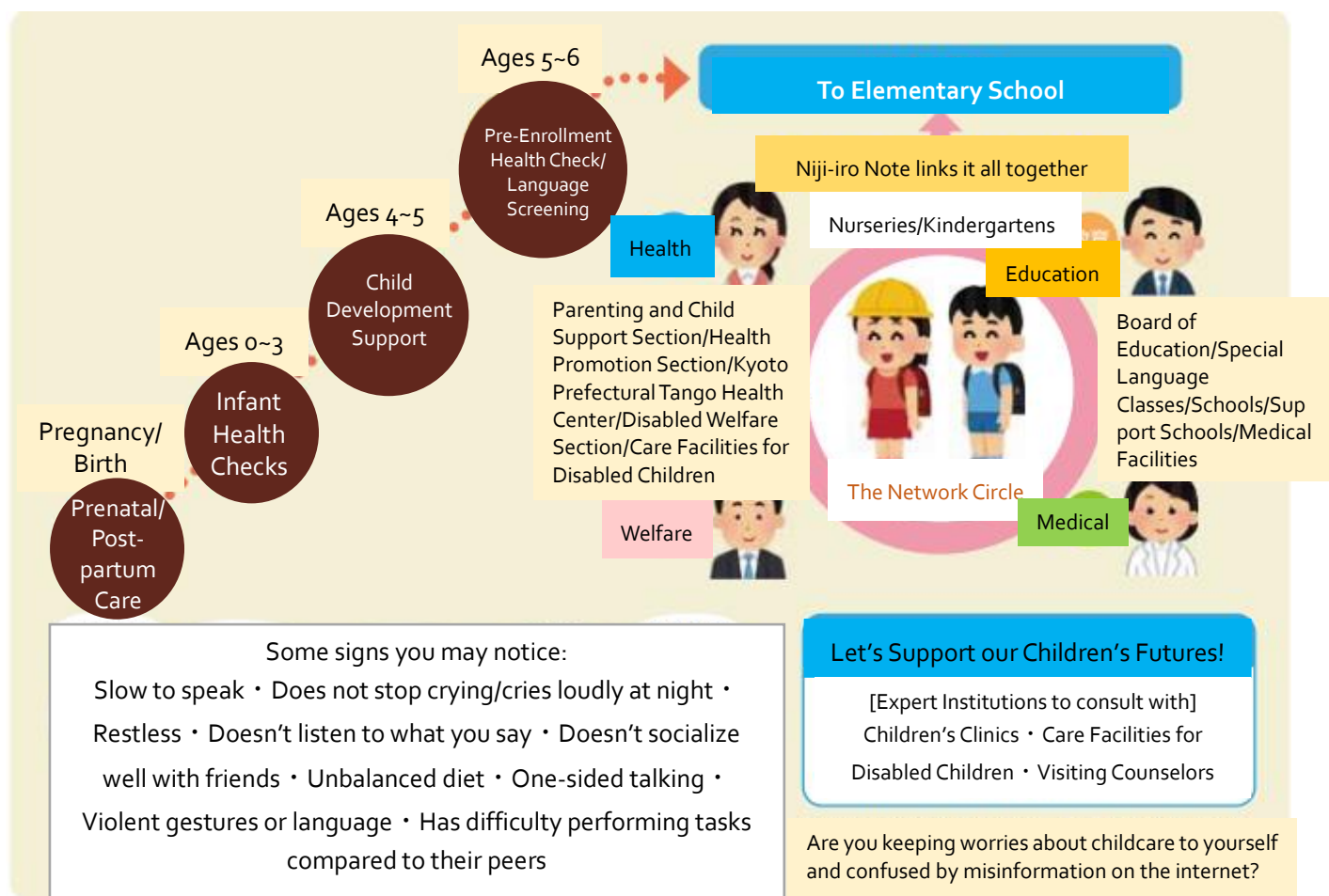
In this issue, we will introduce the developmental support the City offers for school enrollment.

Seamless support from Pregnancy to School Enrollment

From prenatal to post-partum care, there are many opportunities for nurses and nutritionists who provide consultation support to check your child's development.

- Newborn Visitations
- Infant Health Checks
- Baby Food Classes
- Child Care Classes
- Nursery Tours
- Child Development Support for 4-5 year olds
- Consultations for School Enrollment etc.

You can talk about anything your child is not doing well on, difficulties they face in group settings, or worries you have in the household to your nursery/kindergarten teachers, developmental support counselors, or nurses. Our goal is to give you support so you have confidence that your child will be ready for school.



Important Factors for your Child's Healthy Development

- Playing (having fun/with friends/lots of experiences)
- Safe Environment (A clean place where they can relax)
- Healthy Body (Meals/Sleep/Regular Bowel Movements/Biorhythm)
- People who validate and accept them

If you have any worries and troubles about childcare, development, feel free to talk to us ♪

By the Health Promotion Section TEL 0772-69-0350

Child and Parent Comprehensive Support Center Hagu-hagu TEL 0772-69-0370

Gio-Topics

Discover the Charm of the San'in Kaigan UNESCO World Geopark!

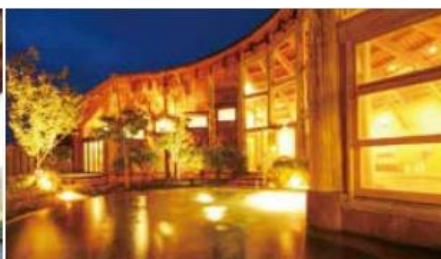
It has been 11 years since the San'in Coast was recognized as a UNESCO World Geopark. We would like to take this opportunity to introduce some of our seasonal recommendations to you so you can re-discover the charm of the Geopark!



Warm up and Relax in a Hot Spring during the Cold Months

How about soaking in a hot spring to warm your body and soul?

Hot springs are formed from groundwater heated under the earth which then bubbles up through cracks and fissures created by geological activity. They are also one of the natural blessings you can enjoy in the Geopark. Kyotango City has approximately 40 springs, which is the most in Kyoto Prefecture. The many good-quality hot springs are a place of respite for our residents and also form the foundation of our tourism industry's development.



Top Right – The Mountain Bath "Kaguya" at Ukawa Hot Spring Yoshino no Sato, known for its beautifying properties.



Bottom Right – The open air bath at Hashiudo-so overlooking Tateiwa

Top Left – The open air bath at Yasaka's Ashiginu Hot Spring. The spring's source is over 50 °C.

Bottom Left – The foot bath inside Yuhigaura-Kitsu Onsen Station called the "White Egret's Bath"

By the San'in Kaigan Geopark Promotion Council TEL 0772-26-3783

View other hot springs by scanning the QR Codes below!

Tourism Association:



San'in Kaigan Geopark:



Kyotango City International Association News **Making Sure Foreign Residents Aren't Left in the Dark during Natural Disasters**

A Disaster Preparedness Training Workshop for foreign residents was held at the Kyotango City Fire Department Headquarters on November 27th. 20 participants from six different countries, such as the Philippines and the UK, attended the workshop and learned about natural disasters that happen in Japan, how to call 119, and how to extinguish small fires.

Overseas, there are many countries that never have earthquakes, and most of the participants had never experienced an earthquake even while living in their home country. During the training workshop, the participants were able to experience sudden tremors by riding on an earthquake simulation vehicle.

"Through the tremors, I was able to experience how difficult and how important it is to protect myself. Natural disasters are scary, but I'll try to do what I can every day to prepare," remarked one of the participants.



*Explanation of emergency kits and
small fire extinguishing practice*

Population and Households in Kyotango

From the end of October to the end of November. The parentheses show the change in the Registry

*Includes foreign residents

Population: 52,927 (-34)

[Male: 25,506 (-17), Female:27,421(-17)]

Number of Households: 22,929 (0)

Main Reasons for Population Change (November)

Moved in: 78 // Moved Out: 75

Births: 33 // Deaths: 69

Due to other reasons: -1