

Public Relations Kyotango Magazine – May 2023



Kyogamisaki Communications Site Safety Liaison Meeting

The Safety Liaison Meeting between Kyotango City and the U.S. Army Kyogamisaki Communications Site was held on March 22nd at Kyotango City Hall. Commander MAJ. James Weir not only briefed the City about traffic safety programs for U.S. military personnel, but also requested the City’s understanding regarding the maintenance and absolutely necessary operation of the electric generator and elaborated on the continuing COVID-19 countermeasures. The Kinki-Chubu Defense Bureau briefed the City about Traffic Safety Course held on December 8th and the U.S.-Japan Exchange Concert held on February 19th.



Vice-Mayor Nakanishi requested further diligence in regards to traffic safety and continuing COVID-19 countermeasures, a report of the results from the ongoing water quality survey of the marine area around the Site, and early maintenance within the Triangle Area. Additionally, in regards to the Act on the Review and Regulation of the Use of Real Estate Surrounding Important Facilities and on Remote Territorial Islands, the Vice-Mayor also requested the Site’s cooperation to not incur any grievances or worries from the local people.

Challenge Day 2023 is on May 31st!

Let's All Band Together as a City and Aim for 70% Participation!

This year's match-up is...

Kyotango City (5th time)

vs.

Naruto City in Tokushima Prefecture (14th time)

About This Year's Opponent

Naruto City, Tokushima Prefecture

Population: 54,801 (as of January 1st, 2023)

Last Participation Rate: 60.5%

Last Time's Results (2022)

Kyotango City (Victor!)

Participation Rate: 57.7%

Number of Participants: 30,499

Hashima City, Gifu Prefecture (opponent)

Participation Rate: 43.5%

Number of Participants: 29,168

What is Challenge Day?

On the last Wednesday of May, local municipalities of a similar population size compete with each other based on the percentage of residents who engage in at least 15 minutes of physical exercise.

15 Minutes of Exercise a Day for Better Health!

This event is to provide an opportunity for residents in our city to improve their health and stamina, while enjoying various physical activities. On Challenge Day, the Radio Exercise program will be broadcasted over the city's P.A. system (5 minutes). Then, just add on another 10 minutes exercising with your family or fellow coworkers! Let's band together and shoot for victory this Challenge Day! For more details about Challenge Day, please look at the city's website. →



How to Participate

① **Exercise for at least 15 minutes or more within the City!**
Play a sport, do light exercises, take a walk, walk your dog... Any physical activity is okay!

② **Report your exercise by 9:30PM that day**

Via online:



By phone: 0772-69-0630 (**Lifelong Learning Section**)

By fax: 0772-68-9061

You can send in multiple reports at once! Obtain the paper form at any town hall.

Population and Number of Households in Kyotango

The number in the parentheses shows the difference from the end of February to the end of March. Includes foreign residents.

Total Population: 51,537 (-304)

Male: 24,838 (-136)

Female: 26,699 (-168)

Number of Households: 22,922 (-2)

Change in Population by Main Criteria:

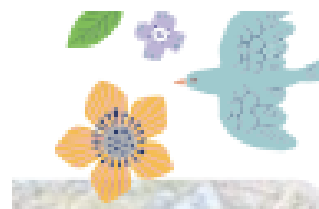
Move In: 189

Move Out: 445

Births: 29

Deaths: 82

Other Reasons: +6/-1



The City will Subsidize Hearing Aids for Seniors!

We are supporting elderly citizens who are hard of hearing, but aren't recognized legally as physically disabled, to be active members of society again!

You are eligible if all of the following conditions apply to you:

1. You do not have a Physical Disabilities Handbook (*Shintai Shogaisha Techo*) due to a hearing disability.
2. You are over 65 years of age and have a registered address in Kyotango
3. Both ears can only hear volumes from 40 to 70 dB
4. You do not qualify for financial aid to purchase hearing aids from the Disability Support Device Expense Assistance Program (*Hosoguhi Shikyu Seido*)
5. You are a member of a household that is either exempt from paying local taxes or receives public assistance.

Amount of Financial Aid

50% of the cost for the actual hearing aid device.

(Maximum 20,000 yen)

*Hearing aid includes the ear mold.

*You can only apply one time per person

*Financial aid does not apply to devices purchased before subsidy is approved.

View the website here →



Let's check how well you can hear!

- You ask someone to repeat something they said during a conversation
- You mishear things often
- People say you speak too loudly
- You hear ringing in your ears
- You can't hear electronic sounds like a microwave going off
- You don't notice cars coming close to you
- You don't notice people calling out to you from behind

If you checked one or two of the items above and feel that it is hard to hear, you may be considered hard-of-hearing.

(From the Japanese Society of Otorhinolaryngology Head and Neck Surgery website)

About hearing problems, please contact:

Kyotango City Hearing and Speech Disability Center TEL 0772-62-5529

About Applying for Financial Aid, please contact:

Disability Welfare Section TEL 0772-62-5529

May is the Red Cross Membership Month!

The Japan Red Cross Society not only carries out support and rescue when natural disasters happen within and outside of Japan, but also promotes first aid training and provides blood supply for transfusions, among other activities to fulfill our duty to humanity.

Our activities are supported by your kind donations to our cause. As a part of Red Cross Month, we ask for your cooperation towards our Membership Drive that will begin all across Japan on May 1st.

Duration of Drive: May 1st (Mon) ~ 31st (Wed)

Donation Goal: 5,220,000 yen



We are holding trainings on first aid and seminars on disaster preparedness. Please inquire if you are interested.

By the **Japan Red Cross Society Kyotango Chapter** (within the Welfare Section)

TEL 0772-69-0310

Free Wood Chips!

The Omiya Final Disposal Site is repurposing cut logs and branches into wood chips! We are giving away the wood chips for free, so please use them in your gardens or farms or to prevent weeds from growing in your yards and parking lots.

Pick Up Days and Times

Mondays, Wednesdays, Fridays, first Sunday of the Month

9AM ~4:30PM

By the Life Environment Section

TEL 0772-69-0240

Distribution for Novel Coronavirus Vaccines Start Again this Spring!

No Out-of-
pocket
Expense!

From May 8th to the end of August, the City will administer novel coronavirus vaccines for 1) Seniors (65 years of age and above), 2) People with underlying conditions (5-64 years of age), and 3) people undergoing medical treatment.

To Receive your Vaccine...

1) Seniors (65 years of age and above)

Please submit your application form. At a later date, the city will notify you when and where to go to get your vaccine by mail. The application forms should have been sent to you either at the end of March or in the middle of April.

2) People with Underlying Conditions (5-64 years of age)

Please submit the Underlying Condition Report Form. At a later date, a medical pre-examination form and instructions on how to reserve your appointment will be sent by mail. The report forms should be sent to each household around the end of April.

3) People Undergoing Medical Treatment

Please check in with your preferred medical facility.

**The new round of vaccinations is for people who have already received 2 or more doses of the coronavirus vaccine.*

**Those who would like to receive the initial doses (1st and 2nd shots) of the vaccine, please make an appointment through the Call Center.*

By the Novel Coronavirus Vaccination Call Center TEL 0772-66-3226

Novel Coronavirus Countermeasures Office TEL 0772-69-0135