

Collection Area
Mineyama
Motomachi, Districts 1-18, Nagaoka, Akasaka, Ishimaru

2025 Kyotango City Household Garbage Collection Calendar

Please place your trash on collection day at the designated collection station
before 8 AM.
(Trash placed at a later time will not be collected.)

Trash from businesses and restaurants cannot be placed at the stations.
It must be either entrusted to a city-authorized general trash collection and transportation service provider or brought to the city processing facility by the business itself.

Burnable Trash
※in designated bags

Non-burnable Trash
※in designated bags

PET Bottles
Container and Packaging Plastics
Styrofoam

Empty Cans
Empty Bottles

Hazardous Waste (Fluorescent Lamps and Dry Batteries)

White Acceptance days at the Mineyama Final Disposal Site

April

Sun	Mon	Tue	Wed	Thu	Fri	Sat
		1	2	3	4	5
6	7	8	9	10	11	12
13	14	15	16	17	18	19
20	21	22	23	24	25	26
27	28	29	30			

May

Sun	Mon	Tue	Wed	Thu	Fri	Sat
				1	2	3
4	5	6	7	8	9	10
11	12	13	14	15	16	17
18	19	20	21	22	23	24
25	26	27	28	29	30	31

June

Sun	Mon	Tue	Wed	Thu	Fri	Sat
1	2	3	4	5	6	7
8	9	10	11	12	13	14
15	16	17	18	19	20	21
22	23	24	25	26	27	28
29	30					

July

Sun	Mon	Tue	Wed	Thu	Fri	Sat
		1	2	3	4	5
6	7	8	9	10	11	12
13	14	15	16	17	18	19
20	21	22	23	24	25	26
27	28	29	30	31		

August

Sun	Mon	Tue	Wed	Thu	Fri	Sat
					1	2
3	4	5	6	7	8	9
10	11	12	13	14	15	16
17	18	19	20	21	22	23
24	25	26	27	28	29	30
31						

September

Sun	Mon	Tue	Wed	Thu	Fri	Sat
	1	2	3	4	5	6
7	8	9	10	11	12	13
14	15	16	17	18	19	20
21	22	23	24	25	26	27
28	29	30				

October

Sun	Mon	Tue	Wed	Thu	Fri	Sat
			1	2	3	4
5	6	7	8	9	10	11
12	13	14	15	16	17	18
19	20	21	22	23	24	25
26	27	28	29	30	31	

November

Sun	Mon	Tue	Wed	Thu	Fri	Sat
						1
2	3	4	5	6	7	8
9	10	11	12	13	14	15
16	17	18	19	20	21	22
23	24	25	26	27	28	29
30						

December

Sun	Mon	Tue	Wed	Thu	Fri	Sat
	1	2	3	4	5	6
7	8	9	10	11	12	13
14	15	16	17	18	19	20
21	22	23	24	25	26	27
28	29	30	31			

January

Sun	Mon	Tue	Wed	Thu	Fri	Sat
				1	2	3
4	5	6	7	8	9	10
11	12	13	14	15	16	17
18	19	20	21	22	23	24
25	26	27	28	29	30	31

February

Sun	Mon	Tue	Wed	Thu	Fri	Sat
1	2	3	4	5	6	7
8	9	10	11	12	13	14
15	16	17	18	19	20	21
22	23	24	25	26	27	28

March

Sun	Mon	Tue	Wed	Thu	Fri	Sat
1	2	3	4	5	6	7
8	9	10	11	12	13	14
15	16	17	18	19	20	21
22	23	24	25	26	27	28
29	30	31				

Garbage Processing Facility

- Reception Hours: 9:00 AM to 4:30 PM (Closed from December 31 to January 3)
- Drop-off Fee: ¥220 for up to 20 kg, an additional ¥110 for every 10 kg over that. (No fee if brought in city-designated bags, applicable only to combustible and non-combustible waste)

Facility Name	Location	Garbage That Can Be Brought In	Reception Weekdays	Phone
Mineyama Clean Center	Mineyamacho Naiki 908	Burnable Trash, Large Burnable Trash, Recyclable Trash, Hazardous Waste	Monday to Saturday (incl. holidays)	62-4626
Mineyama Final Disposal Site	Mineyamacho Naiki 800	Non-Burnable Trash, Large Non-Burnable Trash	Tuesdays and Thursdays (excl. holidays), every 4th Sunday	62-3336
Omiya Final Disposal Site	Omiyacho Misaka 5-1	Non-Burnable Trash, Large Non-Burnable Trash, Hazardous Waste, Pruned Branches and Leaves	Mondays, Wednesdays, Fridays (excl. holidays), every 1st Sunday	64-4866
Amino Final Disposal Site	Aminocho Mitsu 378-1	Non-Burnable Trash, Large Non-Burnable Trash, Hazardous Waste	Tuesdays, Wednesdays, Fridays (excl. holidays), every 3rd Sunday	72-4755
Kumihama Final Disposal Site	Kumihamacho 98-1	Non-Burnable Trash, Large Non-Burnable Trash, Hazardous Waste	Mondays, Thursdays, Saturdays (excl. holidays), every 2nd and 5th Sunday	82-0846

Recycle
Recycle for reuse as resources

Refuse
Refuse items that become garbage

Reuse
Use items repeatedly instead of discarding them

Reduce
Be creative in reducing waste

4R

Used small appliances

Used small appliances should be separated for recycling and placed in the small appliance collection boxes located at the final disposal sites, the Citizens Affairs Bureau, and local community centers.

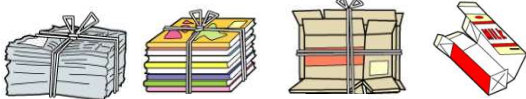
(Box slot size: 60 cm x 25 cm x 60 cm)

Tempura Oil (Used Cooking Oil)

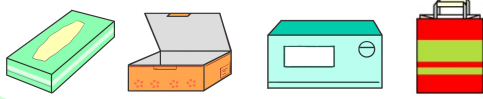
Used cooking oil should be placed in containers set up by the "Local Energy Project" (an initiative by the NPO Econet Tango and Onishi Eisei Co., Ltd.) or in the collection containers located at Kyotango-Omiya Station, Yuhigaura-Kitsuonsen Station, and Shotenkyo Station.



Newspapers, Magazines, Cardboard, Paper Cartons



Mixed Paper



Donate to Paper Recycling Groups such as Craft Circles, PTAs, and Neighborhood Associations.

Inquiries About Waste Disposal: Kyotango City Life Environment Section (230772-69-0240)

Collection Area

Mineyama

Shinmachi, Arayama,
Naiki, Tanba, Yata,
Hashigi

2025 Kyotango City Household Garbage Collection Calendar

Please place your trash on collection day at the designated collection station
before 8 AM.
(Trash placed at a later time will not be collected.)

Trash from businesses and restaurants cannot be placed at the stations.
It must be either entrusted to a city-authorized general trash collection and transportation service provider or brought to the city processing facility by the business itself.

Burnable Trash
※in designated bags

Non-burnable Trash
※in designated bags

PET Bottles
Container and Packaging Plastics
Styrofoam

Empty Cans
Empty Bottles

Hazardous Waste (Fluorescent Lamps and Dry Batteries)

White Acceptance days at the Mineyama Final Disposal Site

April						
Sun	Mon	Tue	Wed	Thu	Fri	Sat
		1	2	3	4	5
6	7	8	9	10	11	12
13	14	15	16	17	18	19
20	21	22	23	24	25	26
27	28	29	30			

May						
Sun	Mon	Tue	Wed	Thu	Fri	Sat
				1	2	3
4	5	6	7	8	9	10
11	12	13	14	15	16	17
18	19	20	21	22	23	24
25	26	27	28	29	30	31

June						
Sun	Mon	Tue	Wed	Thu	Fri	Sat
1	2	3	4	5	6	7
8	9	10	11	12	13	14
15	16	17	18	19	20	21
22	23	24	25	26	27	28
29	30					

July						
Sun	Mon	Tue	Wed	Thu	Fri	Sat
		1	2	3	4	5
6	7	8	9	10	11	12
13	14	15	16	17	18	19
20	21	22	23	24	25	26
27	28	29	30	31		

August						
Sun	Mon	Tue	Wed	Thu	Fri	Sat
					1	2
3	4	5	6	7	8	9
10	11	12	13	14	15	16
17	18	19	20	21	22	23
24	25	26	27	28	29	30
31						

September						
Sun	Mon	Tue	Wed	Thu	Fri	Sat
	1	2	3	4	5	6
7	8	9	10	11	12	13
14	15	16	17	18	19	20
21	22	23	24	25	26	27
28	29	30				

October						
Sun	Mon	Tue	Wed	Thu	Fri	Sat
			1	2	3	4
5	6	7	8	9	10	11
12	13	14	15	16	17	18
19	20	21	22	23	24	25
26	27	28	29	30	31	

November						
Sun	Mon	Tue	Wed	Thu	Fri	Sat
						1
2	3	4	5	6	7	8
9	10	11	12	13	14	15
16	17	18	19	20	21	22
23	24	25	26	27	28	29
30						

December						
Sun	Mon	Tue	Wed	Thu	Fri	Sat
	1	2	3	4	5	6
7	8	9	10	11	12	13
14	15	16	17	18	19	20
21	22	23	24	25	26	27
28	29	30	31			

January						
Sun	Mon	Tue	Wed	Thu	Fri	Sat
				1	2	3
4	5	6	7	8	9	10
11	12	13	14	15	16	17
18	19	20	21	22	23	24
25	26	27	28	29	30	31

February						
Sun	Mon	Tue	Wed	Thu	Fri	Sat
1	2	3	4	5	6	7
8	9	10	11	12	13	14
15	16	17	18	19	20	21
22	23	24	25	26	27	28

March						
Sun	Mon	Tue	Wed	Thu	Fri	Sat
1	2	3	4	5	6	7
8	9	10	11	12	13	14
15	16	17	18	19	20	21
22	23	24	25	26	27	28
29	30	31				

Garbage Processing Facility

- Reception Hours: 9:00 AM to 4:30 PM (Closed from December 31 to January 3)
- Drop-off Fee: ¥220 for up to 20 kg, an additional ¥110 for every 10 kg over that. (No fee if brought in city-designated bags, applicable only to combustible and non-combustible waste)

Facility Name	Location	Garbage That Can Be Brought In	Reception Weekdays	Phone
Mineyama Clean Center	Mineyamacho Naiki 908	Burnable Trash, Large Burnable Trash, Recyclable Trash, Hazardous Waste	Monday to Saturday (incl. holidays)	62-4626
Mineyama Final Disposal Site	Mineyamacho Naiki 800	Non-Burnable Trash, Large Non-Burnable Trash	Tuesdays and Thursdays (excl. holidays), every 4th Sunday	62-3336
Omiya Final Disposal Site	Omiyacho Misaka 5-1	Non-Burnable Trash, Large Non-Burnable Trash, Hazardous Waste, Pruned Branches and Leaves	Mondays, Wednesdays, Fridays (excl. holidays), every 1st Sunday	64-4866
Amino Final Disposal Site	Aminocho Mitsu 378-1	Non-Burnable Trash, Large Non-Burnable Trash, Hazardous Waste	Tuesdays, Wednesdays, Fridays (excl. holidays), every 3rd Sunday	72-4755
Kumihama Final Disposal Site	Kumihamacho 98-1	Non-Burnable Trash, Large Non-Burnable Trash, Hazardous Waste	Mondays, Thursdays, Saturdays (excl. holidays), every 2nd and 5th Sunday	82-0846

Recycle

Recycle for reuse as resources

Refuse

Refuse items that become garbage

Reuse

Use items repeatedly instead of discarding them

Reduce

Be creative in reducing waste

Used small appliances

Used small appliances should be separated for recycling and placed in the small appliance collection boxes located at the final disposal sites, the Citizens Affairs Bureau, and local community centers.

(Box slot size: 60 cm x 25 cm x 60 cm)

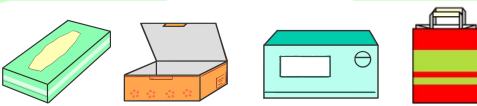
Tempura Oil (Used Cooking Oil)

Used cooking oil should be placed in containers set up by the "Local Energy Project" (an initiative by the NPO Econet Tango and Onishi Eisei Co., Ltd.) or in the collection containers located at Kyotango-Omiya Station, Yuhigaura-Kitsuonsen Station, and Shotenkyo Station.

Newspapers, Magazines, Cardboard, Paper Cartons



Mixed Paper



Donate to Paper Recycling Groups such as Craft Circles, PTAs, and Neighborhood Associations.

Inquiries About Waste Disposal: Kyotango City Life Environment Section (☎0772-69-0240)

Collection Area

Mineyama

Yasu, Nishiyama, Konishi,
Suge, Ninbari, Nika,
Hisatsugi, Goka,
Masudome

2025 Kyotango City Household Garbage Collection Calendar

Please place your trash on collection day at the
designated collection station**before 8 AM.**

(Trash placed at a later time will not be collected.)

**Trash from businesses and restaurants cannot be
placed at the stations.**It must be either entrusted to a city-authorized general trash collection and transportation
service provider or brought to the city processing facility by the business itself.**Burnable Trash**
※in designated bags**Non-burnable Trash**
※in designated bags**PET
Bottles****Container and
Packaging Plastics****Styrofoam****Empty
Cans****Empty
Bottles****Hazardous
Waste (Fluorescent
Lamps and Dry
Batteries)****White**Acceptance days at the Mineyama Final Disposal Site

April

Sun	Mon	Tue	Wed	Thu	Fri	Sat
		1	2	3	4	5
6	7	8	9	10	11	12
13	14	15	16	17	18	19
20	21	22	23	24	25	26
27	28	29	30			

May

Sun	Mon	Tue	Wed	Thu	Fri	Sat
				1	2	3
4	5	6	7	8	9	10
11	12	13	14	15	16	17
18	19	20	21	22	23	24
25	26	27	28	29	30	31

June

Sun	Mon	Tue	Wed	Thu	Fri	Sat
1	2	3	4	5	6	7
8	9	10	11	12	13	14
15	16	17	18	19	20	21
22	23	24	25	26	27	28
29	30					

July

Sun	Mon	Tue	Wed	Thu	Fri	Sat
		1	2	3	4	5
6	7	8	9	10	11	12
13	14	15	16	17	18	19
20	21	22	23	24	25	26
27	28	29	30	31		

August

Sun	Mon	Tue	Wed	Thu	Fri	Sat
					1	2
3	4	5	6	7	8	9
10	11	12	13	14	15	16
17	18	19	20	21	22	23
24	25	26	27	28	29	30
31						

September

Sun	Mon	Tue	Wed	Thu	Fri	Sat
	1	2	3	4	5	6
7	8	9	10	11	12	13
14	15	16	17	18	19	20
21	22	23	24	25	26	27
28	29	30				

October

Sun	Mon	Tue	Wed	Thu	Fri	Sat
			1	2	3	4
5	6	7	8	9	10	11
12	13	14	15	16	17	18
19	20	21	22	23	24	25
26	27	28	29	30	31	

November

Sun	Mon	Tue	Wed	Thu	Fri	Sat
						1
2	3	4	5	6	7	8
9	10	11	12	13	14	15
16	17	18	19	20	21	22
23	24	25	26	27	28	29
30						

December

Sun	Mon	Tue	Wed	Thu	Fri	Sat
	1	2	3	4	5	6
7	8	9	10	11	12	13
14	15	16	17	18	19	20
21	22	23	24	25	26	27
28	29	30	31			

January

Sun	Mon	Tue	Wed	Thu	Fri	Sat
				1	2	3
4	5	6	7	8	9	10
11	12	13	14	15	16	17
18	19	20	21	22	23	24
25	26	27	28	29	30	31

February

Sun	Mon	Tue	Wed	Thu	Fri	Sat
1	2	3	4	5	6	7
8	9	10	11	12	13	14
15	16	17	18	19	20	21
22	23	24	25	26	27	28

March

Sun	Mon	Tue	Wed	Thu	Fri	Sat
1	2	3	4	5	6	7
8	9	10	11	12	13	14
15	16	17	18	19	20	21
22	23	24	25	26	27	28
29	30	31				

Garbage Processing Facility

■ Reception Hours: 9:00 AM to 4:30 PM (Closed from December 31 to January 3)

■ Drop-off Fee: ¥220 for up to 20 kg, an additional ¥110 for every 10 kg over that. (No fee if brought in city-designated bags, applicable only to combustible and non-combustible waste)

Facility Name	Location	Garbage That Can Be Brought In	Reception Weekdays	Phone
Mineyama Clean Center	Mineyamacho Naiki 908	Burnable Trash, Large Burnable Trash, Recyclable Trash, Hazardous Waste	Monday to Saturday (incl. holidays)	62-4626
Mineyama Final Disposal Site	Mineyamacho Naiki 800	Non-Burnable Trash, Large Non-Burnable Trash	Tuesdays and Thursdays (excl. holidays), every 4th Sunday	62-3336
Omiya Final Disposal Site	Omiyacho Misaka 5-1	Non-Burnable Trash, Large Non-Burnable Trash, Hazardous Waste, Pruned Branches and Leaves	Mondays, Wednesdays, Fridays (excl. holidays), every 1st Sunday	64-4866
Amino Final Disposal Site	Aminocho Mitsu 378-1	Non-Burnable Trash, Large Non-Burnable Trash, Hazardous Waste	Tuesdays, Wednesdays, Fridays (excl. holidays), every 3rd Sunday	72-4755
Kumihama Final Disposal Site	Kumihamacho 98-1	Non-Burnable Trash, Large Non-Burnable Trash, Hazardous Waste	Mondays, Thursdays, Saturdays (excl. holidays), every 2nd and 5th Sunday	82-0846

Recycle

Recycle for
reuse as
resources

Refuse

Refuse items
that become
garbage

Reuse

Use items
repeatedly
instead of
discarding
them

Reduce

Be creative in
reducing waste

4R

Used small appliances

Used small appliances
should be separated for
recycling and placed in the
small appliance collection
boxes located at the final
disposal sites, the Citizens
Affairs Bureau, and local
community centers.

(Box slot size: 60 cm x 25 cm x 60 cm)

Tempura Oil (Used Cooking Oil)

Used cooking oil should be
placed in containers set up by
the "Local Energy Project" (an
initiative by the NPO Econet
Tango and Onishi Eisei Co., Ltd.)
or in the collection containers
located at Kyotango-Omiya
Station, Yuhigaura-Kitsuonsen
Station, and Shotenkyo Station.

Newspapers, Magazines, Cardboard, Paper Cartons



Mixed Paper

Donate to Paper Recycling Groups such as Craft Circles,
PTAs, and Neighborhood Associations.

Inquiries About Waste Disposal: Kyotango City Life Environment Section (250772-69-0240)

Collection Area

Mineyama

Onaru,
Mochi

2025 Kyotango City Household Garbage Collection Calendar

Please place your trash on collection day at the
designated collection station**before 8 AM.**

(Trash placed at a later time will not be collected.)

**Trash from businesses and restaurants cannot be
placed at the stations.**It must be either entrusted to a city-authorized general trash collection and transportation
service provider or brought to the city processing facility by the business itself.Burnable Trash
※in designated bagsNon-burnable Trash
※in designated bagsPET
BottlesContainer and
Packaging Plastics

Styrofoam

Empty
CansEmpty
BottlesHazardous
Waste (Fluorescent
Lamps and Dry
Batteries)

White

Acceptance days at the Mineyama Final Disposal Site

April

Sun	Mon	Tue	Wed	Thu	Fri	Sat
		1	2	3	4	5
6	7	8	9	10	11	12
13	14	15	16	17	18	19
20	21	22	23	24	25	26
27	28	29	30			

May

Sun	Mon	Tue	Wed	Thu	Fri	Sat
				1	2	3
4	5	6	7	8	9	10
11	12	13	14	15	16	17
18	19	20	21	22	23	24
25	26	27	28	29	30	31

June

Sun	Mon	Tue	Wed	Thu	Fri	Sat
1	2	3	4	5	6	7
8	9	10	11	12	13	14
15	16	17	18	19	20	21
22	23	24	25	26	27	28
29	30					

July

Sun	Mon	Tue	Wed	Thu	Fri	Sat
		1	2	3	4	5
6	7	8	9	10	11	12
13	14	15	16	17	18	19
20	21	22	23	24	25	26
27	28	29	30	31		

August

Sun	Mon	Tue	Wed	Thu	Fri	Sat
					1	2
3	4	5	6	7	8	9
10	11	12	13	14	15	16
17	18	19	20	21	22	23
24	25	26	27	28	29	30
31						

September

Sun	Mon	Tue	Wed	Thu	Fri	Sat
	1	2	3	4	5	6
7	8	9	10	11	12	13
14	15	16	17	18	19	20
21	22	23	24	25	26	27
28	29	30				

October

Sun	Mon	Tue	Wed	Thu	Fri	Sat
		1	2	3	4	5
6	7	8	9	10	11	12
13	14	15	16	17	18	19
20	21	22	23	24	25	26
27	28	29	30	31		

November

Sun	Mon	Tue	Wed	Thu	Fri	Sat
						1
2	3	4	5	6	7	8
9	10	11	12	13	14	15
16	17	18	19	20	21	22
23	24	25	26	27	28	29
30						

December

Sun	Mon	Tue	Wed	Thu	Fri	Sat
	1	2	3	4	5	6
7	8	9	10	11	12	13
14	15	16	17	18	19	20
21	22	23	24	25	26	27
28	29	30	31			

January

Sun	Mon	Tue	Wed	Thu	Fri	Sat
				1	2	3
4	5	6	7	8	9	10
11	12	13	14	15	16	17
18	19	20	21	22	23	24
25	26	27	28	29	30	31

February

Sun	Mon	Tue	Wed	Thu	Fri	Sat
1	2	3	4	5	6	7
8	9	10	11	12	13	14
15	16	17	18	19	20	21
22	23	24	25	26	27	28

March

Sun	Mon	Tue	Wed	Thu	Fri	Sat
1	2	3	4	5	6	7
8	9	10	11	12	13	14
15	16	17	18	19	20	21
22	23	24	25	26	27	28
29	30	31				

Garbage Processing Facility

■ Reception Hours: 9:00 AM to 4:30 PM (Closed from December 31 to January 3)

■ Drop-off Fee: ¥220 for up to 20 kg, an additional ¥110 for every 10 kg over that. (No fee if brought in city-designated bags, applicable only to combustible and non-combustible waste)

Facility Name	Location	Garbage That Can Be Brought In	Reception Weekdays	Phone
Mineyama Clean Center	Mineyamacho Naiki 908	Burnable Trash, Large Burnable Trash, Recyclable Trash, Hazardous Waste	Monday to Saturday (incl. holidays)	62-4626
Mineyama Final Disposal Site	Mineyamacho Naiki 800	Non-Burnable Trash, Large Non-Burnable Trash	Tuesdays and Thursdays (excl. holidays), every 4th Sunday	62-3336
Omiya Final Disposal Site	Omiyacho Misaka 5-1	Non-Burnable Trash, Large Non-Burnable Trash, Hazardous Waste, Pruned Branches and Leaves	Mondays, Wednesdays, Fridays (excl. holidays), every 1st Sunday	64-4866
Amino Final Disposal Site	Aminochō Mitsu 378-1	Non-Burnable Trash, Large Non-Burnable Trash, Hazardous Waste	Tuesdays, Wednesdays, Fridays (excl. holidays), every 3rd Sunday	72-4755
Kumihama Final Disposal Site	Kumihamacho 98-1	Non-Burnable Trash, Large Non-Burnable Trash, Hazardous Waste	Mondays, Thursdays, Saturdays (excl. holidays), every 2nd and 5th Sunday	82-0846

Recycle

Recycle for
reuse as
resources

Refuse

Refuse items
that become
garbage

Reuse

Use items
repeatedly
instead of
discarding
them

Reduce

Be creative in
reducing waste

Used small appliances

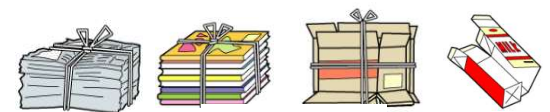
Used small appliances
should be separated for
recycling and placed in the
small appliance collection
boxes located at the final
disposal sites, the Citizens
Affairs Bureau, and local
community centers.

(Box slot size: 60 cm x 25 cm x 60 cm)

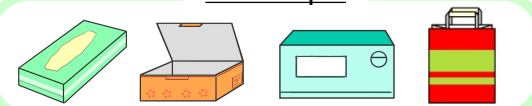
Tempura Oil (Used Cooking Oil)

Used cooking oil should be
placed in containers set up by
the "Local Energy Project" (an
initiative by the NPO Econet
Tango and Onishi Eisei Co., Ltd.)
or in the collection containers
located at Kyotango-Omiya
Station, Yuhigaura-Kitsuonsen
Station, and Shotenkyo Station.

Newspapers, Magazines, Cardboard, Paper Cartons



Mixed Paper

Donate to Paper Recycling Groups such as Craft Circles,
PTAs, and Neighborhood Associations.

Inquiries About Waste Disposal: Kyotango City Life Environment Section (☎0772-69-0240)

Collection Area
Omiya
Kobe, Zennoji

2025 Kyotango City Household Garbage Collection Calendar

Please place your trash **on collection day** at the designated collection station **before 8 AM.**
(Trash placed at a later time will not be collected.)

Trash from businesses and restaurants cannot be placed at the stations.
It must be either entrusted to a city-authorized general trash collection and transportation service provider or brought to the city processing facility by the business itself.

Burnable Trash
※in designated bags

Non-burnable Trash
※in designated bags

PET Bottles

Container and Packaging Plastics

Styrofoam

Empty Cans

Empty Bottles

Hazardous Waste (Fluorescent Lamps and Dry Batteries)

White

Acceptance days at the Mineyama Final Disposal Site

April						
Sun	Mon	Tue	Wed	Thu	Fri	Sat
		1	2	3	4	5
6	7	8	9	10	11	12
13	14	15	16	17	18	19
20	21	22	23	24	25	26
27	28	29	30			

May						
Sun	Mon	Tue	Wed	Thu	Fri	Sat
				1	2	3
4	5	6	7	8	9	10
11	12	13	14	15	16	17
18	19	20	21	22	23	24
25	26	27	28	29	30	31

June						
Sun	Mon	Tue	Wed	Thu	Fri	Sat
1	2	3	4	5	6	7
8	9	10	11	12	13	14
15	16	17	18	19	20	21
22	23	24	25	26	27	28
29	30					

July						
Sun	Mon	Tue	Wed	Thu	Fri	Sat
		1	2	3	4	5
6	7	8	9	10	11	12
13	14	15	16	17	18	19
20	21	22	23	24	25	26
27	28	29	30	31		

August						
Sun	Mon	Tue	Wed	Thu	Fri	Sat
					1	2
3	4	5	6	7	8	9
10	11	12	13	14	15	16
17	18	19	20	21	22	23
24	25	26	27	28	29	30
31						

September						
Sun	Mon	Tue	Wed	Thu	Fri	Sat
	1	2	3	4	5	6
7	8	9	10	11	12	13
14	15	16	17	18	19	20
21	22	23	24	25	26	27
28	29	30				

October						
Sun	Mon	Tue	Wed	Thu	Fri	Sat
			1	2	3	4
5	6	7	8	9	10	11
12	13	14	15	16	17	18
19	20	21	22	23	24	25
26	27	28	29	30	31	

November						
Sun	Mon	Tue	Wed	Thu	Fri	Sat
						1
2	3	4	5	6	7	8
9	10	11	12	13	14	15
16	17	18	19	20	21	22
23	24	25	26	27	28	29
30						

December						
Sun	Mon	Tue	Wed	Thu	Fri	Sat
	1	2	3	4	5	6
7	8	9	10	11	12	13
14	15	16	17	18	19	20
21	22	23	24	25	26	27
28	29	30	31			

January						
Sun	Mon	Tue	Wed	Thu	Fri	Sat
				1	2	3
4	5	6	7	8	9	10
11	12	13	14	15	16	17
18	19	20	21	22	23	24
25	26	27	28	29	30	31

February						
Sun	Mon	Tue	Wed	Thu	Fri	Sat
1	2	3	4	5	6	7
8	9	10	11	12	13	14
15	16	17	18	19	20	21
22	23	24	25	26	27	28

March						
Sun	Mon	Tue	Wed	Thu	Fri	Sat
1	2	3	4	5	6	7
8	9	10	11	12	13	14
15	16	17	18	19	20	21
22	23	24	25	26	27	28
29	30	31				

Garbage Processing Facility

- Reception Hours: 9:00 AM to 4:30 PM (Closed from December 31 to January 3)
- Drop-off Fee: ¥220 for up to 20 kg, an additional ¥110 for every 10 kg over that. (No fee if brought in city-designated bags, applicable only to combustible and non-combustible waste)

Facility Name	Location	Garbage That Can Be Brought In	Reception Weekdays	Phone
Mineyama Clean Center	Mineyamacho Naiki 908	Burnable Trash, Large Burnable Trash, Recyclable Trash, Hazardous Waste	Monday to Saturday (incl. holidays)	62-4626
Mineyama Final Disposal Site	Mineyamacho Naiki 800	Non-Burnable Trash, Large Non-Burnable Trash	Tuesdays and Thursdays (excl. holidays), every 4th Sunday	62-3336
Omiya Final Disposal Site	Omiyacho Misaka 5-1	Non-Burnable Trash, Large Non-Burnable Trash, Hazardous Waste, Pruned Branches and Leaves	Mondays, Wednesdays, Fridays (excl. holidays), every 1st Sunday	64-4866
Amino Final Disposal Site	Aminocho Mitsu 378-1	Non-Burnable Trash, Large Non-Burnable Trash, Hazardous Waste	Tuesdays, Wednesdays, Fridays (excl. holidays), every 3rd Sunday	72-4755
Kumihama Final Disposal Site	Kumihamacho 98-1	Non-Burnable Trash, Large Non-Burnable Trash, Hazardous Waste	Mondays, Thursdays, Saturdays (excl. holidays), every 2nd and 5th Sunday	82-0846

Recycle

Recycle for reuse as resources

Refuse

Refuse items that become garbage

Reuse

Use items repeatedly instead of discarding them

Reduce

Be creative in reducing waste

Used small appliances

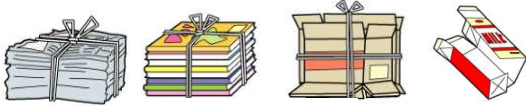
Used small appliances should be separated for recycling and placed in the small appliance collection boxes located at the final disposal sites, the Citizens Affairs Bureau, and local community centers.

(Box slot size: 60 cm x 25 cm x 60 cm)

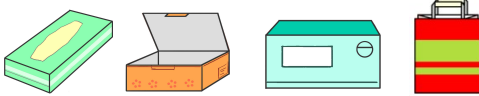
Tempura Oil (Used Cooking Oil)

Used cooking oil should be placed in containers set up by the "Local Energy Project" (an initiative by the NPO Econet Tango and Onishi Eisei Co., Ltd.) or in the collection containers located at Kyotango-Omiya Station, Yuhigaura-Kitsuonsen Station, and Shotenkyo Station.

Newspapers, Magazines, Cardboard, Paper Cartons



Mixed Paper



Donate to Paper Recycling Groups such as Craft Circles, PTAs, and Neighborhood Associations.

Inquiries About Waste Disposal: Kyotango City Life Environment Section (20772-69-0240)

Collection Area

Omiya

Kuchiono, Okuono,
Kamitsuneyoshi,
Shimotsuneyoshi

2025 Kyotango City Household Garbage Collection Calendar

Please place your trash on collection day at the
designated collection station**before 8 AM.**

(Trash placed at a later time will not be collected.)

**Trash from businesses and restaurants cannot be
placed at the stations.**It must be either entrusted to a city-authorized general trash collection and transportation
service provider or brought to the city processing facility by the business itself.**Burnable Trash**
※in designated bags**Non-burnable Trash**
※in designated bags**PET
Bottles****Container and
Packaging Plastics****Styrofoam****Empty
Cans****Empty
Bottles****Hazardous
Waste** (Fluorescent Lamps
and Dry Batteries)**White**Acceptance days at the Mineyama Final Disposal Site

April

Sun	Mon	Tue	Wed	Thu	Fri	Sat
		1	2	3	4	5
6	7	8	9	10	11	12
13	14	15	16	17	18	19
20	21	22	23	24	25	26
27	28	29	30			

May

Sun	Mon	Tue	Wed	Thu	Fri	Sat
				1	2	3
4	5	6	7	8	9	10
11	12	13	14	15	16	17
18	19	20	21	22	23	24
25	26	27	28	29	30	31

June

Sun	Mon	Tue	Wed	Thu	Fri	Sat
1	2	3	4	5	6	7
8	9	10	11	12	13	14
15	16	17	18	19	20	21
22	23	24	25	26	27	28
29	30					

July

Sun	Mon	Tue	Wed	Thu	Fri	Sat
		1	2	3	4	5
6	7	8	9	10	11	12
13	14	15	16	17	18	19
20	21	22	23	24	25	26
27	28	29	30	31		

August

Sun	Mon	Tue	Wed	Thu	Fri	Sat
					1	2
3	4	5	6	7	8	9
10	11	12	13	14	15	16
17	18	19	20	21	22	23
24	25	26	27	28	29	30
31						

September

Sun	Mon	Tue	Wed	Thu	Fri	Sat
	1	2	3	4	5	6
7	8	9	10	11	12	13
14	15	16	17	18	19	20
21	22	23	24	25	26	27
28	29	30				

October

Sun	Mon	Tue	Wed	Thu	Fri	Sat
			1	2	3	4
5	6	7	8	9	10	11
12	13	14	15	16	17	18
19	20	21	22	23	24	25
26	27	28	29	30	31	

November

Sun	Mon	Tue	Wed	Thu	Fri	Sat
						1
2	3	4	5	6	7	8
9	10	11	12	13	14	15
16	17	18	19	20	21	22
23	24	25	26	27	28	29
30						

December

Sun	Mon	Tue	Wed	Thu	Fri	Sat
	1	2	3	4	5	6
7	8	9	10	11	12	13
14	15	16	17	18	19	20
21	22	23	24	25	26	27
28	29	30	31			

January

Sun	Mon	Tue	Wed	Thu	Fri	Sat
				1	2	3
4	5	6	7	8	9	10
11	12	13	14	15	16	17
18	19	20	21	22	23	24
25	26	27	28	29	30	31

February

Sun	Mon	Tue	Wed	Thu	Fri	Sat
1	2	3	4	5	6	7
8	9	10	11	12	13	14
15	16	17	18	19	20	21
22	23	24	25	26	27	28

March

Sun	Mon	Tue	Wed	Thu	Fri	Sat
1	2	3	4	5	6	7
8	9	10	11	12	13	14
15	16	17	18	19	20	21
22	23	24	25	26	27	28
29	30	31				

Garbage Processing Facility

■ Reception Hours: 9:00 AM to 4:30 PM (Closed from December 31 to January 3)

■ Drop-off Fee: ¥220 for up to 20 kg, an additional ¥110 for every 10 kg over that. (No fee if brought in city-designated bags, applicable only to combustible and non-combustible waste)

Facility Name	Location	Garbage That Can Be Brought In	Reception Weekdays	Phone
Mineyama Clean Center	Mineyamacho Naiki 908	Burnable Trash, Large Burnable Trash, Recyclable Trash, Hazardous Waste	Monday to Saturday (incl. holidays)	62-4626
Mineyama Final Disposal Site	Mineyamacho Naiki 800	Non-Burnable Trash, Large Non-Burnable Trash	Tuesdays and Thursdays (excl. holidays), every 4th Sunday	62-3336
Omiya Final Disposal Site	Omiyacho Misaka 5-1	Non-Burnable Trash, Large Non-Burnable Trash, Hazardous Waste, Pruned Branches and Leaves	Mondays, Wednesdays, Fridays (excl. holidays), every 1st Sunday	64-4866
Amino Final Disposal Site	Aminocho Mitsu 378-1	Non-Burnable Trash, Large Non-Burnable Trash, Hazardous Waste	Tuesdays, Wednesdays, Fridays (excl. holidays), every 3rd Sunday	72-4755
Kumihama Final Disposal Site	Kumihamacho 98-1	Non-Burnable Trash, Large Non-Burnable Trash, Hazardous Waste	Mondays, Thursdays, Saturdays (excl. holidays), every 2nd and 5th Sunday	82-0846

Recycle

Recycle for
reuse as
resources

Refuse

Refuse items
that become
garbage

Reuse

Use items
repeatedly
instead of
discarding
them

Reduce

Be creative in
reducing waste

Used small appliances

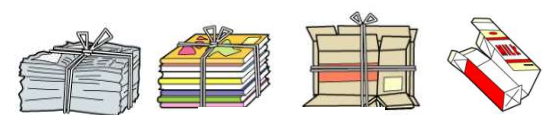
Used small appliances
should be separated for
recycling and placed in the
small appliance collection
boxes located at the final
disposal sites, the Citizens
Affairs Bureau, and local
community centers.

(Box slot size: 60 cm x 25 cm x 60 cm)

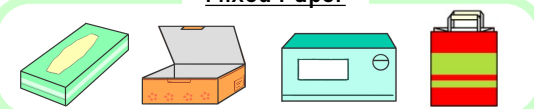
Tempura Oil (Used Cooking Oil)

Used cooking oil should be
placed in containers set up by
the "Local Energy Project" (an
initiative by the NPO Econet
Tango and Onishi Eisei Co., Ltd.)
or in the collection containers
located at Kyotango-Omiya
Station, Yuhigaura-Kitsuonsen
Station, and Shotenkyo Station.

Newspapers, Magazines, Cardboard, Paper Cartons



Mixed Paper

Donate to Paper Recycling Groups such as Craft Circles,
PTAs, and Neighborhood Associations.

Inquiries About Waste Disposal: Kyotango City Life Environment Section (230772-69-0240)

Collection Area

Omiya

Mie, Morimoto, Taniuchi,
Misaka, Ikaga, Shingu,
Nobutoshi, Kusumi,
Akeda, Suki

2025 Kyotango City Household Garbage Collection Calendar

Please place your trash on collection day at the
designated collection station**before 8 AM.**

(Trash placed at a later time will not be collected.)

**Trash from businesses and restaurants cannot be
placed at the stations.**It must be either entrusted to a city-authorized general trash collection and transportation
service provider or brought to the city processing facility by the business itself.**Burnable Trash**
※in designated bags**Non-burnable Trash**
※in designated bags**PET
Bottles****Container and
Packaging Plastics****Styrofoam****Empty
Cans****Empty
Bottles****Hazardous
Waste** (Fluorescent Lamps
and Dry Batteries)**White**Acceptance days at the Mineyama Final Disposal Site

April

Sun	Mon	Tue	Wed	Thu	Fri	Sat
		1	2	3	4	5
6	7	8	9	10	11	12
13	14	15	16	17	18	19
20	21	22	23	24	25	26
27	28	29	30			

May

Sun	Mon	Tue	Wed	Thu	Fri	Sat
				1	2	3
4	5	6	7	8	9	10
11	12	13	14	15	16	17
18	19	20	21	22	23	24
25	26	27	28	29	30	31

June

Sun	Mon	Tue	Wed	Thu	Fri	Sat
1	2	3	4	5	6	7
8	9	10	11	12	13	14
15	16	17	18	19	20	21
22	23	24	25	26	27	28
29	30					

July

Sun	Mon	Tue	Wed	Thu	Fri	Sat
		1	2	3	4	5
6	7	8	9	10	11	12
13	14	15	16	17	18	19
20	21	22	23	24	25	26
27	28	29	30	31		

August

Sun	Mon	Tue	Wed	Thu	Fri	Sat
					1	2
3	4	5	6	7	8	9
10	11	12	13	14	15	16
17	18	19	20	21	22	23
24	25	26	27	28	29	30
31						

September

Sun	Mon	Tue	Wed	Thu	Fri	Sat
	1	2	3	4	5	6
7	8	9	10	11	12	13
14	15	16	17	18	19	20
21	22	23	24	25	26	27
28	29	30				

October

Sun	Mon	Tue	Wed	Thu	Fri	Sat
			1	2	3	4
5	6	7	8	9	10	11
12	13	14	15	16	17	18
19	20	21	22	23	24	25
26	27	28	29	30	31	

November

Sun	Mon	Tue	Wed	Thu	Fri	Sat
						1
2	3	4	5	6	7	8
9	10	11	12	13	14	15
16	17	18	19	20	21	22
23	24	25	26	27	28	29
30						

December

Sun	Mon	Tue	Wed	Thu	Fri	Sat
	1	2	3	4	5	6
7	8	9	10	11	12	13
14	15	16	17	18	19	20
21	22	23	24	25	26	27
28	29	30	31			

January

Sun	Mon	Tue	Wed	Thu	Fri	Sat
				1	2	3
4	5	6	7	8	9	10
11	12	13	14	15	16	17
18	19	20	21	22	23	24
25	26	27	28	29	30	31

February

Sun	Mon	Tue	Wed	Thu	Fri	Sat
1	2	3	4	5	6	7
8	9	10	11	12	13	14
15	16	17	18	19	20	21
22	23	24	25	26	27	28

March

Sun	Mon	Tue	Wed	Thu	Fri	Sat
1	2	3	4	5	6	7
8	9	10	11	12	13	14
15	16	17	18	19	20	21
22	23	24	25	26	27	28
29	30	31				

Garbage Processing Facility

■ Reception Hours: 9:00 AM to 4:30 PM (Closed from December 31 to January 3)

■ Drop-off Fee: ¥220 for up to 20 kg, an additional ¥110 for every 10 kg over that. (No fee if brought in city-designated bags, applicable only to combustible and non-combustible waste)

Facility Name	Location	Garbage That Can Be Brought In	Reception Weekdays	Phone
Mineyama Clean Center	Mineyamacho Naiki 908	Burnable Trash, Large Burnable Trash, Recyclable Trash, Hazardous Waste	Monday to Saturday (incl. holidays)	62-4626
Mineyama Final Disposal Site	Mineyamacho Naiki 800	Non-Burnable Trash, Large Non-Burnable Trash	Tuesdays and Thursdays (excl. holidays), every 4th Sunday	62-3336
Omiya Final Disposal Site	Omiyacho Misaka 5-1	Non-Burnable Trash, Large Non-Burnable Trash, Hazardous Waste, Pruned Branches and Leaves	Mondays, Wednesdays, Fridays (excl. holidays), every 1st Sunday	64-4866
Amino Final Disposal Site	Aminochi Mitsu 378-1	Non-Burnable Trash, Large Non-Burnable Trash, Hazardous Waste	Tuesdays, Wednesdays, Fridays (excl. holidays), every 3rd Sunday	72-4755
Kumihama Final Disposal Site	Kumihamacho 98-1	Non-Burnable Trash, Large Non-Burnable Trash, Hazardous Waste	Mondays, Thursdays, Saturdays (excl. holidays), every 2nd and 5th Sunday	82-0846

Recycle

Recycle for
reuse as
resources

Refuse

Refuse items
that become
garbage

Reuse

Use items
repeatedly
instead of
discarding
them

Reduce

Be creative in
reducing waste

Used small appliances

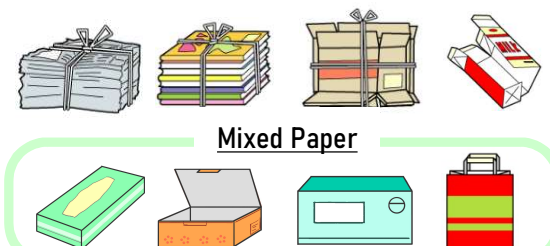
Used small appliances
should be separated for
recycling and placed in the
small appliance collection
boxes located at the final
disposal sites, the Citizens
Affairs Bureau, and local
community centers.

(Box slot size: 60 cm x 25 cm x 60 cm)

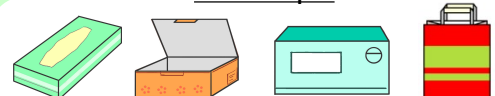
Tempura Oil (Used Cooking Oil)

Used cooking oil should be
placed in containers set up by
the "Local Energy Project" (an
initiative by the NPO Econet
Tango and Onishi Eisei Co., Ltd.)
or in the collection containers
located at Kyotango-Omiya
Station, Yuhigaura-Kitsuonsen
Station, and Shotenkyo Station.

Newspapers, Magazines, Cardboard, Paper Cartons



Mixed Paper



Inquiries About Waste Disposal: Kyotango City Life Environment Section (230772-69-0240)

Collection Area
Amino
Takahashi, Gujo, Go, Ikunouchi, Kiri-hata, Shinjo, Shimooka

2025 Kyotango City Household Garbage Collection Calendar

Please place your trash **on collection day** at the designated collection station **before 8 AM.**
(Trash placed at a later time will not be collected.)

Trash from businesses and restaurants cannot be placed at the stations.
It must be either entrusted to a city-authorized general trash collection and transportation service provider or brought to the city processing facility by the business itself.

Burnable Trash Every Mon & Thu ※in designated bags	Non-burnable Trash ※in designated bags	Container and Packaging Plastics	Styrofoam
--	---	----------------------------------	-----------

Hazardous Waste (Fluorescent Lamps and Dry Batteries)	Container and Packaging Plastics	Styrofoam
---	----------------------------------	-----------

Empty Cans	Empty Bottles	PET Bottles
------------	---------------	-------------

White Acceptance days at the **Amino Final Disposal Site**

April						
Sun	Mon	Tue	Wed	Thu	Fri	Sat
		1	2	3	4	5
6	7	8	9	10	11	12
13	14	15	16	17	18	19
20	21	22	23	24	25	26
27	28	29	30			

May						
Sun	Mon	Tue	Wed	Thu	Fri	Sat
				1	2	3
4	5	6	7	8	9	10
11	12	13	14	15	16	17
18	19	20	21	22	23	24
25	26	27	28	29	30	31

June						
Sun	Mon	Tue	Wed	Thu	Fri	Sat
1	2	3	4	5	6	7
8	9	10	11	12	13	14
15	16	17	18	19	20	21
22	23	24	25	26	27	28
29	30					

July						
Sun	Mon	Tue	Wed	Thu	Fri	Sat
		1	2	3	4	5
6	7	8	9	10	11	12
13	14	15	16	17	18	19
20	21	22	23	24	25	26
27	28	29	30	31		

August						
Sun	Mon	Tue	Wed	Thu	Fri	Sat
					1	2
3	4	5	6	7	8	9
10	11	12	13	14	15	16
17	18	19	20	21	22	23
24	25	26	27	28	29	30
31						

September						
Sun	Mon	Tue	Wed	Thu	Fri	Sat
	1	2	3	4	5	6
7	8	9	10	11	12	13
14	15	16	17	18	19	20
21	22	23	24	25	26	27
28	29	30				

October						
Sun	Mon	Tue	Wed	Thu	Fri	Sat
			1	2	3	4
5	6	7	8	9	10	11
12	13	14	15	16	17	18
19	20	21	22	23	24	25
26	27	28	29	30	31	

November						
Sun	Mon	Tue	Wed	Thu	Fri	Sat
						1
2	3	4	5	6	7	8
9	10	11	12	13	14	15
16	17	18	19	20	21	22
23	24	25	26	27	28	29
30						

December						
Sun	Mon	Tue	Wed	Thu	Fri	Sat
	1	2	3	4	5	6
7	8	9	10	11	12	13
14	15	16	17	18	19	20
21	22	23	24	25	26	27
28	29	30	31			

January						
Sun	Mon	Tue	Wed	Thu	Fri	Sat
				1	2	3
4	5	6	7	8	9	10
11	12	13	14	15	16	17
18	19	20	21	22	23	24
25	26	27	28	29	30	31

February						
Sun	Mon	Tue	Wed	Thu	Fri	Sat
1	2	3	4	5	6	7
8	9	10	11	12	13	14
15	16	17	18	19	20	21
22	23	24	25	26	27	28

March						
Sun	Mon	Tue	Wed	Thu	Fri	Sat
1	2	3	4	5	6	7
8	9	10	11	12	13	14
15	16	17	18	19	20	21
22	23	24	25	26	27	28
29	30	31				

Garbage Processing Facility

- Reception Hours: 9:00 AM to 4:30 PM (Closed from December 31 to January 3)
- Drop-off Fee: ¥220 for up to 20 kg, an additional ¥110 for every 10 kg over that. (No fee if brought in city-designated bags, applicable only to combustible and non-combustible waste)

Facility Name	Location	Garbage That Can Be Brought In	Reception Weekdays	Phone
Mineyama Clean Center	Mineyamacho Naiki 908	Burnable Trash, Large Burnable Trash, Recyclable Trash, Hazardous Waste	Monday to Saturday (incl. holidays)	62-4626
Mineyama Final Disposal Site	Mineyamacho Naiki 800	Non-Burnable Trash, Large Non-Burnable Trash	Tuesdays and Thursdays (excl. holidays), every 4th Sunday	62-3336
Omiya Final Disposal Site	Omiyacho Misaka 5-1	Non-Burnable Trash, Large Non-Burnable Trash, Hazardous Waste, Pruned Branches and Leaves	Mondays, Wednesdays, Fridays (excl. holidays), every 1st Sunday	64-4866
Amino Final Disposal Site	Aminocho Mitsu 378-1	Non-Burnable Trash, Large Non-Burnable Trash, Hazardous Waste	Tuesdays, Wednesdays, Fridays (excl. holidays), every 3rd Sunday	72-4755
Kumihama Final Disposal Site	Kumihamacho 98-1	Non-Burnable Trash, Large Non-Burnable Trash, Hazardous Waste	Mondays, Thursdays, Saturdays (excl. holidays), every 2nd and 5th Sunday	82-0846

Recycle

Recycle for reuse as resources

Refuse

Refuse items that become garbage

Reuse

Use items repeatedly instead of discarding them

Reduce

Be creative in reducing waste

Used small appliances

Used small appliances should be separated for recycling and placed in the small appliance collection boxes located at the final disposal sites, the Citizens Affairs Bureau, and local community centers.

(Box slot size: 60 cm x 25 cm x 60 cm)

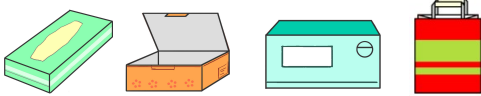
Tempura Oil (Used Cooking Oil)

Used cooking oil should be placed in containers set up by the "Local Energy Project" (an initiative by the NPO Econet Tango and Onishi Eisei Co., Ltd.) or in the collection containers located at Kyotango-Omiya Station, Yuhigaura-Kitsuonsen Station, and Shotenkyo Station.

Newspapers, Magazines, Cardboard, Paper Cartons



Mixed Paper



Donate to Paper Recycling Groups such as Craft Circles, PTAs, and Neighborhood Associations.

Inquiries About Waste Disposal: Kyotango City Life Environment Section (☎0772-69-0240)

Collection Area

Amino

Sumiyoshi, Kamikoji,
Momoyama, Osada.
Fukuda, Goryo

2025 Kyotango City Household Garbage Collection Calendar

Please place your trash **on collection day** at the designated collection station
before 8 AM.
(Trash placed at a later time will not be collected.)

Trash from businesses and restaurants cannot be placed at the stations.

It must be either entrusted to a city-authorized general trash collection and transportation service provider or brought to the city processing facility by the business itself.

Burnable Trash
※in designated bags

Non-burnable Trash
※in designated bags

Container and Packaging Plastics

Styrofoam

Hazardous Waste (Fluorescent Lamps and Dry Batteries)

Container and Packaging Plastics

Styrofoam

Empty Cans

Empty Bottles

PET Bottles

White

Acceptance days at the Mineyama Final Disposal Site

April

Sun	Mon	Tue	Wed	Thu	Fri	Sat
		1	2	3	4	5
6	7	8	9	10	11	12
13	14	15	16	17	18	19
20	21	22	23	24	25	26
27	28	29	30			

May

Sun	Mon	Tue	Wed	Thu	Fri	Sat
				1	2	3
4	5	6	7	8	9	10
11	12	13	14	15	16	17
18	19	20	21	22	23	24
25	26	27	28	29	30	31

June

Sun	Mon	Tue	Wed	Thu	Fri	Sat
1	2	3	4	5	6	7
8	9	10	11	12	13	14
15	16	17	18	19	20	21
22	23	24	25	26	27	28
29	30					

July

Sun	Mon	Tue	Wed	Thu	Fri	Sat
		1	2	3	4	5
6	7	8	9	10	11	12
13	14	15	16	17	18	19
20	21	22	23	24	25	26
27	28	29	30	31		

August

Sun	Mon	Tue	Wed	Thu	Fri	Sat
					1	2
3	4	5	6	7	8	9
10	11	12	13	14	15	16
17	18	19	20	21	22	23
24	25	26	27	28	29	30
31						

September

Sun	Mon	Tue	Wed	Thu	Fri	Sat
	1	2	3	4	5	6
7	8	9	10	11	12	13
14	15	16	17	18	19	20
21	22	23	24	25	26	27
28	29	30				

October

Sun	Mon	Tue	Wed	Thu	Fri	Sat
			1	2	3	4
5	6	7	8	9	10	11
12	13	14	15	16	17	18
19	20	21	22	23	24	25
26	27	28	29	30	31	

November

Sun	Mon	Tue	Wed	Thu	Fri	Sat
						1
2	3	4	5	6	7	8
9	10	11	12	13	14	15
16	17	18	19	20	21	22
23	24	25	26	27	28	29
30						

December

Sun	Mon	Tue	Wed	Thu	Fri	Sat
	1	2	3	4	5	6
7	8	9	10	11	12	13
14	15	16	17	18	19	20
21	22	23	24	25	26	27
28	29	30	31			

January

Sun	Mon	Tue	Wed	Thu	Fri	Sat
				1	2	3
4	5	6	7	8	9	10
11	12	13	14	15	16	17
18	19	20	21	22	23	24
25	26	27	28	29	30	31

February

Sun	Mon	Tue	Wed	Thu	Fri	Sat
1	2	3	4	5	6	7
8	9	10	11	12	13	14
15	16	17	18	19	20	21
22	23	24	25	26	27	28

March

Sun	Mon	Tue	Wed	Thu	Fri	Sat
1	2	3	4	5	6	7
8	9	10	11	12	13	14
15	16	17	18	19	20	21
22	23	24	25	26	27	28
29	30	31				

Garbage Processing Facility

■ Reception Hours: 9:00 AM to 4:30 PM (Closed from December 31 to January 3)

■ Drop-off Fee: ¥220 for up to 20 kg, an additional ¥110 for every 10 kg over that. (No fee if brought in city-designated bags, applicable only to combustible and non-combustible waste)

Facility Name	Location	Garbage That Can Be Brought In	Reception Weekdays	Phone
Mineyama Clean Center	Mineyamacho Naiki 908	Burnable Trash, Large Burnable Trash, Recyclable Trash, Hazardous Waste	Monday to Saturday (incl. holidays)	62-4626
Mineyama Final Disposal Site	Mineyamacho Naiki 800	Non-Burnable Trash, Large Non-Burnable Trash	Tuesdays and Thursdays (excl. holidays), every 4th Sunday	62-3336
Omiya Final Disposal Site	Omiyacho Misaka 5-1	Non-Burnable Trash, Large Non-Burnable Trash, Hazardous Waste, Pruned Branches and Leaves	Mondays, Wednesdays, Fridays (excl. holidays), every 1st Sunday	64-4866
Amino Final Disposal Site	Aminocho Mitsu 378-1	Non-Burnable Trash, Large Non-Burnable Trash, Hazardous Waste	Tuesdays, Wednesdays, Fridays (excl. holidays), every 3rd Sunday	72-4755
Kumihama Final Disposal Site	Kumihamacho 98-1	Non-Burnable Trash, Large Non-Burnable Trash, Hazardous Waste	Mondays, Thursdays, Saturdays (excl. holidays), every 2nd and 5th Sunday	82-0846

Recycle

Recycle for reuse as resources

Refuse

Refuse items that become garbage

Reuse

Use items repeatedly instead of discarding them

Reduce

Be creative in reducing waste

Used small appliances

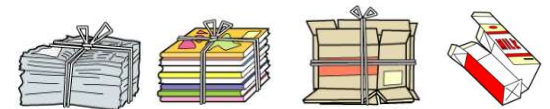
Used small appliances should be separated for recycling and placed in the small appliance collection boxes located at the final disposal sites, the Citizens Affairs Bureau, and local community centers.

(Box slot size: 60 cm x 25 cm x 60 cm)

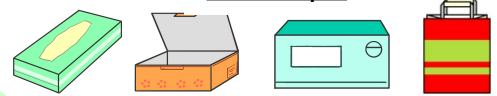
Tempura Oil (Used Cooking Oil)

Used cooking oil should be placed in containers set up by the "Local Energy Project" (an initiative by the NPO Econet Tango and Onishi Eisei Co., Ltd.) or in the collection containers located at Kyotango-Omiya Station, Yuhigaura-Kitsuonsen Station, and Shotenkyo Station.

Newspapers, Magazines, Cardboard, Paper Cartons



Mixed Paper



Donate to Paper Recycling Groups such as Craft Circles, PTAs, and Neighborhood Associations.

Inquiries About Waste Disposal: Kyotango City Life Environment Section (☎0772-69-0240)

Collection Area

Amino

Kobama

2025 Kyotango City Household Garbage Collection Calendar

Please place your trash **on collection day** at the designated collection station
before 8 AM.
(Trash placed at a later time will not be collected.)

Trash from businesses and restaurants cannot be placed at the stations.

It must be either entrusted to a city-authorized general trash collection and transportation service provider or brought to the city processing facility by the business itself.

Burnable Trash
※in designated bags

Non-burnable Trash
※in designated bags

Container and Packaging Plastics

Styrofoam

Hazardous Waste (Fluorescent Lamps and Dry Batteries)

Container and Packaging Plastics

Styrofoam

Empty Cans

Empty Bottles

PET Bottles

White

Acceptance days at the Mineyama Final Disposal Site

April

Sun	Mon	Tue	Wed	Thu	Fri	Sat
		1	2	3	4	5
6	7	8	9	10	11	12
13	14	15	16	17	18	19
20	21	22	23	24	25	26
27	28	29	30			

May

Sun	Mon	Tue	Wed	Thu	Fri	Sat
				1	2	3
4	5	6	7	8	9	10
11	12	13	14	15	16	17
18	19	20	21	22	23	24
25	26	27	28	29	30	31

June

Sun	Mon	Tue	Wed	Thu	Fri	Sat
1	2	3	4	5	6	7
8	9	10	11	12	13	14
15	16	17	18	19	20	21
22	23	24	25	26	27	28
29	30					

July

Sun	Mon	Tue	Wed	Thu	Fri	Sat
		1	2	3	4	5
6	7	8	9	10	11	12
13	14	15	16	17	18	19
20	21	22	23	24	25	26
27	28	29	30	31		

August

Sun	Mon	Tue	Wed	Thu	Fri	Sat
					1	2
3	4	5	6	7	8	9
10	11	12	13	14	15	16
17	18	19	20	21	22	23
24	25	26	27	28	29	30
31						

September

Sun	Mon	Tue	Wed	Thu	Fri	Sat
	1	2	3	4	5	6
7	8	9	10	11	12	13
14	15	16	17	18	19	20
21	22	23	24	25	26	27
28	29	30				

October

Sun	Mon	Tue	Wed	Thu	Fri	Sat
			1	2	3	4
5	6	7	8	9	10	11
12	13	14	15	16	17	18
19	20	21	22	23	24	25
26	27	28	29	30	31	

November

Sun	Mon	Tue	Wed	Thu	Fri	Sat
						1
2	3	4	5	6	7	8
9	10	11	12	13	14	15
16	17	18	19	20	21	22
23	24	25	26	27	28	29
30						

December

Sun	Mon	Tue	Wed	Thu	Fri	Sat
	1	2	3	4	5	6
7	8	9	10	11	12	13
14	15	16	17	18	19	20
21	22	23	24	25	26	27
28	29	30	31			

January

Sun	Mon	Tue	Wed	Thu	Fri	Sat
				1	2	3
4	5	6	7	8	9	10
11	12	13	14	15	16	17
18	19	20	21	22	23	24
25	26	27	28	29	30	31

February

Sun	Mon	Tue	Wed	Thu	Fri	Sat
1	2	3	4	5	6	7
8	9	10	11	12	13	14
15	16	17	18	19	20	21
22	23	24	25	26	27	28

March

Sun	Mon	Tue	Wed	Thu	Fri	Sat
1	2	3	4	5	6	7
8	9	10	11	12	13	14
15	16	17	18	19	20	21
22	23	24	25	26	27	28
29	30	31				

Garbage Processing Facility

■ Reception Hours: 9:00 AM to 4:30 PM (Closed from December 31 to January 3)

■ Drop-off Fee: ¥220 for up to 20 kg, an additional ¥110 for every 10 kg over that. (No fee if brought in city-designated bags, applicable only to combustible and non-combustible waste)

Facility Name	Location	Garbage That Can Be Brought In	Reception Weekdays	Phone
Mineyama Clean Center	Mineyamacho Naiki 908	Burnable Trash, Large Burnable Trash, Recyclable Trash, Hazardous Waste	Monday to Saturday (incl. holidays)	62-4626
Mineyama Final Disposal Site	Mineyamacho Naiki 800	Non-Burnable Trash, Large Non-Burnable Trash	Tuesdays and Thursdays (excl. holidays), every 4th Sunday	62-3336
Omiya Final Disposal Site	Omiyacho Misaka 5-1	Non-Burnable Trash, Large Non-Burnable Trash, Hazardous Waste, Pruned Branches and Leaves	Mondays, Wednesdays, Fridays (excl. holidays), every 1st Sunday	64-4866
Amino Final Disposal Site	Aminochi Mitsu 378-1	Non-Burnable Trash, Large Non-Burnable Trash, Hazardous Waste	Tuesdays, Wednesdays, Fridays (excl. holidays), every 3rd Sunday	72-4755
Kumihama Final Disposal Site	Kumihamacho 98-1	Non-Burnable Trash, Large Non-Burnable Trash, Hazardous Waste	Mondays, Thursdays, Saturdays (excl. holidays), every 2nd and 5th Sunday	82-0846

Recycle

Recycle for reuse as resources

Refuse

Refuse items that become garbage

Reuse

Use items repeatedly instead of discarding them

Reduce

Be creative in reducing waste

Used small appliances

Used small appliances should be separated for recycling and placed in the small appliance collection boxes located at the final disposal sites, the Citizens Affairs Bureau, and local community centers.

(Box slot size: 60 cm x 25 cm x 60 cm)

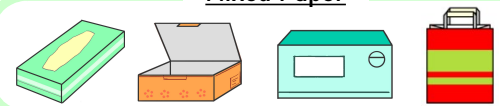
Tempura Oil (Used Cooking Oil)

Used cooking oil should be placed in containers set up by the "Local Energy Project" (an initiative by the NPO Econet Tango and Onishi Eisei Co., Ltd.) or in the collection containers located at Kyotango-Omiya Station, Yuhigaura-Kitsuonsen Station, and Shotenkyo Station.

Newspapers, Magazines, Cardboard, Paper Cartons



Mixed Paper



Donate to Paper Recycling Groups such as Craft Circles, PTAs, and Neighborhood Associations.

Inquiries About Waste Disposal: Kyotango City Life Environment Section (☎0772-69-0240)

Collection Area
Mineyama
Mizunoe

2025 Kyotango City Household Garbage Collection Calendar

Please place your trash **on collection day** at the designated collection station
before 8 AM.
 (Trash placed at a later time will not be collected.)

Trash from businesses and restaurants cannot be placed at the stations.
 It must be either entrusted to a city-authorized general trash collection and transportation service provider or brought to the city processing facility by the business itself.

Burnable Trash ※in designated bags	Non-burnable Trash ※in designated bags	Container and Packaging Plastics	Styrofoam
---------------------------------------	---	----------------------------------	-----------

Hazardous Waste (Fluorescent Lamps and Dry Batteries)	Container and Packaging Plastics	Styrofoam
---	----------------------------------	-----------

Empty Cans	Empty Bottles	PET Bottles
------------	---------------	-------------

White Acceptance days at the Mineyama Final Disposal Site

April						
Sun	Mon	Tue	Wed	Thu	Fri	Sat
		1	2	3	4	5
6	7	8	9	10	11	12
13	14	15	16	17	18	19
20	21	22	23	24	25	26
27	28	29	30			

May						
Sun	Mon	Tue	Wed	Thu	Fri	Sat
				1	2	3
4	5	6	7	8	9	10
11	12	13	14	15	16	17
18	19	20	21	22	23	24
25	26	27	28	29	30	31

June						
Sun	Mon	Tue	Wed	Thu	Fri	Sat
1	2	3	4	5	6	7
8	9	10	11	12	13	14
15	16	17	18	19	20	21
22	23	24	25	26	27	28
29	30					

July						
Sun	Mon	Tue	Wed	Thu	Fri	Sat
		1	2	3	4	5
6	7	8	9	10	11	12
13	14	15	16	17	18	19
20	21	22	23	24	25	26
27	28	29	30	31		

August						
Sun	Mon	Tue	Wed	Thu	Fri	Sat
					1	2
3	4	5	6	7	8	9
10	11	12	13	14	15	16
17	18	19	20	21	22	23
24	25	26	27	28	29	30
31						

September						
Sun	Mon	Tue	Wed	Thu	Fri	Sat
	1	2	3	4	5	6
7	8	9	10	11	12	13
14	15	16	17	18	19	20
21	22	23	24	25	26	27
28	29	30				

October						
Sun	Mon	Tue	Wed	Thu	Fri	Sat
			1	2	3	4
5	6	7	8	9	10	11
12	13	14	15	16	17	18
19	20	21	22	23	24	25
26	27	28	29	30	31	

November						
Sun	Mon	Tue	Wed	Thu	Fri	Sat
						1
2	3	4	5	6	7	8
9	10	11	12	13	14	15
16	17	18	19	20	21	22
23	24	25	26	27	28	29
30						

December						
Sun	Mon	Tue	Wed	Thu	Fri	Sat
	1	2	3	4	5	6
7	8	9	10	11	12	13
14	15	16	17	18	19	20
21	22	23	24	25	26	27
28	29	30	31			

January						
Sun	Mon	Tue	Wed	Thu	Fri	Sat
				1	2	3
4	5	6	7	8	9	10
11	12	13	14	15	16	17
18	19	20	21	22	23	24
25	26	27	28	29	30	31

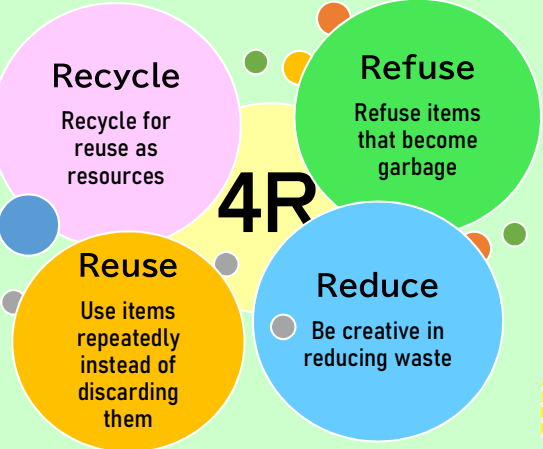
February						
Sun	Mon	Tue	Wed	Thu	Fri	Sat
1	2	3	4	5	6	7
8	9	10	11	12	13	14
15	16	17	18	19	20	21
22	23	24	25	26	27	28

March						
Sun	Mon	Tue	Wed	Thu	Fri	Sat
1	2	3	4	5	6	7
8	9	10	11	12	13	14
15	16	17	18	19	20	21
22	23	24	25	26	27	28
29	30	31				

Garbage Processing Facility

- Reception Hours: 9:00 AM to 4:30 PM (Closed from December 31 to January 3)
- Drop-off Fee: ¥220 for up to 20 kg, an additional ¥110 for every 10 kg over that. (No fee if brought in city-designated bags, applicable only to combustible and non-combustible waste)

Facility Name	Location	Garbage That Can Be Brought In	Reception Weekdays	Phone
Mineyama Clean Center	Mineyamacho Naiki 908	Burnable Trash, Large Burnable Trash, Recyclable Trash, Hazardous Waste	Monday to Saturday (incl. holidays)	62-4626
Mineyama Final Disposal Site	Mineyamacho Naiki 800	Non-Burnable Trash, Large Non-Burnable Trash	Tuesdays and Thursdays (excl. holidays), every 4th Sunday	62-3336
Omiya Final Disposal Site	Omiyacho Misaka 5-1	Non-Burnable Trash, Large Non-Burnable Trash, Hazardous Waste, Pruned Branches and Leaves	Mondays, Wednesdays, Fridays (excl. holidays), every 1st Sunday	64-4866
Amino Final Disposal Site	Aminocho Mitsu 378-1	Non-Burnable Trash, Large Non-Burnable Trash, Hazardous Waste	Tuesdays, Wednesdays, Fridays (excl. holidays), every 3rd Sunday	72-4755
Kumihama Final Disposal Site	Kumihamacho 98-1	Non-Burnable Trash, Large Non-Burnable Trash, Hazardous Waste	Mondays, Thursdays, Saturdays (excl. holidays), every 2nd and 5th Sunday	82-0846

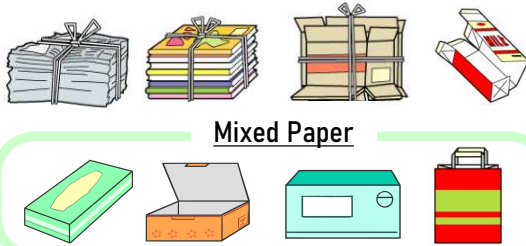


Used small appliances
 Used small appliances should be separated for recycling and placed in the small appliance collection boxes located at the final disposal sites, the Citizens Affairs Bureau, and local community centers.

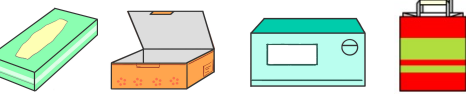
(Box slot size: 60 cm x 25 cm x 60 cm)

Tempura Oil (Used Cooking Oil)
 Used cooking oil should be placed in containers set up by the "Local Energy Project" (an initiative by the NPO Econet Tango and Onishi Eisei Co., Ltd.) or in the collection containers located at Kyotango-Omiya Station, Yuhigaura-Kitsuonsen Station, and Shotenkyo Station.

Newspapers, Magazines, Cardboard, Paper Cartons



Mixed Paper



Donate to Paper Recycling Groups such as Craft Circles, PTAs, and Neighborhood Associations.

Inquiries About Waste Disposal: Kyotango City Life Environment Section (20772-69-0240)

Collection Area
Amino
Asamogawa, Iso

2025 Kyotango City Household Garbage Collection Calendar

Please place your trash on collection day at the designated collection station
before 8 AM.
 (Trash placed at a later time will not be collected.)

Trash from businesses and restaurants cannot be placed at the stations.
 It must be either entrusted to a city-authorized general trash collection and transportation service provider or brought to the city processing facility by the business itself.

Burnable Trash ※in designated bags	Non-burnable Trash ※in designated bags	Container and Packaging Plastics	Styrofoam
---------------------------------------	---	----------------------------------	-----------

Hazardous Waste (Fluorescent Lamps and Dry Batteries)	Container and Packaging Plastics	Styrofoam
---	----------------------------------	-----------

Empty Cans	Empty Bottles	PET Bottles
------------	---------------	-------------

White Acceptance days at the Mineyama Final Disposal Site

April						
Sun	Mon	Tue	Wed	Thu	Fri	Sat
		1	2	3	4	5
6	7	8	9	10	11	12
13	14	15	16	17	18	19
20	21	22	23	24	25	26
27	28	29	30			

May						
Sun	Mon	Tue	Wed	Thu	Fri	Sat
				1	2	3
4	5	6	7	8	9	10
11	12	13	14	15	16	17
18	19	20	21	22	23	24
25	26	27	28	29	30	31

June						
Sun	Mon	Tue	Wed	Thu	Fri	Sat
1	2	3	4	5	6	7
8	9	10	11	12	13	14
15	16	17	18	19	20	21
22	23	24	25	26	27	28
29	30					

July						
Sun	Mon	Tue	Wed	Thu	Fri	Sat
		1	2	3	4	5
6	7	8	9	10	11	12
13	14	15	16	17	18	19
20	21	22	23	24	25	26
27	28	29	30	31		

August						
Sun	Mon	Tue	Wed	Thu	Fri	Sat
					1	2
3	4	5	6	7	8	9
10	11	12	13	14	15	16
17	18	19	20	21	22	23
24	25	26	27	28	29	30
31						

September						
Sun	Mon	Tue	Wed	Thu	Fri	Sat
	1	2	3	4	5	6
7	8	9	10	11	12	13
14	15	16	17	18	19	20
21	22	23	24	25	26	27
28	29	30				

October						
Sun	Mon	Tue	Wed	Thu	Fri	Sat
			1	2	3	4
5	6	7	8	9	10	11
12	13	14	15	16	17	18
19	20	21	22	23	24	25
26	27	28	29	30	31	

November						
Sun	Mon	Tue	Wed	Thu	Fri	Sat
						1
2	3	4	5	6	7	8
9	10	11	12	13	14	15
16	17	18	19	20	21	22
23	24	25	26	27	28	29
30						

December						
Sun	Mon	Tue	Wed	Thu	Fri	Sat
	1	2	3	4	5	6
7	8	9	10	11	12	13
14	15	16	17	18	19	20
21	22	23	24	25	26	27
28	29	30	31			

January						
Sun	Mon	Tue	Wed	Thu	Fri	Sat
				1	2	3
4	5	6	7	8	9	10
11	12	13	14	15	16	17
18	19	20	21	22	23	24
25	26	27	28	29	30	31

February						
Sun	Mon	Tue	Wed	Thu	Fri	Sat
1	2	3	4	5	6	7
8	9	10	11	12	13	14
15	16	17	18	19	20	21
22	23	24	25	26	27	28

March						
Sun	Mon	Tue	Wed	Thu	Fri	Sat
1	2	3	4	5	6	7
8	9	10	11	12	13	14
15	16	17	18	19	20	21
22	23	24	25	26	27	28
29	30	31				

Garbage Processing Facility

- Reception Hours: 9:00 AM to 4:30 PM (Closed from December 31 to January 3)
- Drop-off Fee: ¥220 for up to 20 kg, an additional ¥110 for every 10 kg over that. (No fee if brought in city-designated bags, applicable only to combustible and non-combustible waste)

Facility Name	Location	Garbage That Can Be Brought In	Reception Weekdays	Phone
Mineyama Clean Center	Mineyamacho Naiki 908	Burnable Trash, Large Burnable Trash, Recyclable Trash, Hazardous Waste	Monday to Saturday (incl. holidays)	62-4626
Mineyama Final Disposal Site	Mineyamacho Naiki 800	Non-Burnable Trash, Large Non-Burnable Trash	Tuesdays and Thursdays (excl. holidays), every 4th Sunday	62-3336
Omiya Final Disposal Site	Omiyacho Misaka 5-1	Non-Burnable Trash, Large Non-Burnable Trash, Hazardous Waste, Pruned Branches and Leaves	Mondays, Wednesdays, Fridays (excl. holidays), every 1st Sunday	64-4866
Amino Final Disposal Site	Aminocho Mitsu 378-1	Non-Burnable Trash, Large Non-Burnable Trash, Hazardous Waste	Tuesdays, Wednesdays, Fridays (excl. holidays), every 3rd Sunday	72-4755
Kumihama Final Disposal Site	Kumihamacho 98-1	Non-Burnable Trash, Large Non-Burnable Trash, Hazardous Waste	Mondays, Thursdays, Saturdays (excl. holidays), every 2nd and 5th Sunday	82-0846



Used small appliances
 Used small appliances should be separated for recycling and placed in the small appliance collection boxes located at the final disposal sites, the Citizens Affairs Bureau, and local community centers.

(Box slot size: 60 cm x 25 cm x 60 cm)

Tempura Oil (Used Cooking Oil)
 Used cooking oil should be placed in containers set up by the "Local Energy Project" (an initiative by the NPO Econet Tango and Onishi Eisei Co., Ltd.) or in the collection containers located at Kyotango-Omiya Station, Yuhigaura-Kitsuonsen Station, and Shotenkyo Station.

Newspapers, Magazines, Cardboard, Paper Cartons

Mixed Paper

Donate to Paper Recycling Groups such as Craft Circles, PTAs, and Neighborhood Associations.

Inquiries About Waste Disposal: Kyotango City Life Environment Section (☎0772-69-0240)

Collection Area
Amino
Shimazu, Chuzenji, Kakezu, Asobi, Mitsu

2025 Kyotango City Household Garbage Collection Calendar

Please place your trash **on collection day** at the designated collection station
before 8 AM.
 (Trash placed at a later time will not be collected.)

Trash from businesses and restaurants cannot be placed at the stations.
 It must be either entrusted to a city-authorized general trash collection and transportation service provider or brought to the city processing facility by the business itself.

Burnable Trash ※in designated bags	Non-burnable Trash ※in designated bags	Container and Packaging Plastics	Styrofoam
---------------------------------------	---	----------------------------------	-----------

Hazardous Waste (Fluorescent Lamps and Dry Batteries)	Container and Packaging Plastics	Styrofoam
---	----------------------------------	-----------

Empty Cans	Empty Bottles	PET Bottles
------------	---------------	-------------

White

Acceptance days at the Mineyama Final Disposal Site

April						
Sun	Mon	Tue	Wed	Thu	Fri	Sat
		1	2	3	4	5
6	7	8	9	10	11	12
13	14	15	16	17	18	19
20	21	22	23	24	25	26
27	28	29	30			

May						
Sun	Mon	Tue	Wed	Thu	Fri	Sat
				1	2	3
4	5	6	7	8	9	10
11	12	13	14	15	16	17
18	19	20	21	22	23	24
25	26	27	28	29	30	31

June						
Sun	Mon	Tue	Wed	Thu	Fri	Sat
1	2	3	4	5	6	7
8	9	10	11	12	13	14
15	16	17	18	19	20	21
22	23	24	25	26	27	28
29	30					

July						
Sun	Mon	Tue	Wed	Thu	Fri	Sat
		1	2	3	4	5
6	7	8	9	10	11	12
13	14	15	16	17	18	19
20	21	22	23	24	25	26
27	28	29	30	31		

August						
Sun	Mon	Tue	Wed	Thu	Fri	Sat
					1	2
3	4	5	6	7	8	9
10	11	12	13	14	15	16
17	18	19	20	21	22	23
24	25	26	27	28	29	30
31						

September						
Sun	Mon	Tue	Wed	Thu	Fri	Sat
	1	2	3	4	5	6
7	8	9	10	11	12	13
14	15	16	17	18	19	20
21	22	23	24	25	26	27
28	29	30				

October						
Sun	Mon	Tue	Wed	Thu	Fri	Sat
			1	2	3	4
5	6	7	8	9	10	11
12	13	14	15	16	17	18
19	20	21	22	23	24	25
26	27	28	29	30	31	

November						
Sun	Mon	Tue	Wed	Thu	Fri	Sat
						1
2	3	4	5	6	7	8
9	10	11	12	13	14	15
16	17	18	19	20	21	22
23	24	25	26	27	28	29
30						

December						
Sun	Mon	Tue	Wed	Thu	Fri	Sat
	1	2	3	4	5	6
7	8	9	10	11	12	13
14	15	16	17	18	19	20
21	22	23	24	25	26	27
28	29	30	31			

January						
Sun	Mon	Tue	Wed	Thu	Fri	Sat
				1	2	3
4	5	6	7	8	9	10
11	12	13	14	15	16	17
18	19	20	21	22	23	24
25	26	27	28	29	30	31

February						
Sun	Mon	Tue	Wed	Thu	Fri	Sat
1	2	3	4	5	6	7
8	9	10	11	12	13	14
15	16	17	18	19	20	21
22	23	24	25	26	27	28

March						
Sun	Mon	Tue	Wed	Thu	Fri	Sat
1	2	3	4	5	6	7
8	9	10	11	12	13	14
15	16	17	18	19	20	21
22	23	24	25	26	27	28
29	30	31				

Garbage Processing Facility

- Reception Hours: 9:00 AM to 4:30 PM (Closed from December 31 to January 3)
- Drop-off Fee: ¥220 for up to 20 kg, an additional ¥110 for every 10 kg over that. (No fee if brought in city-designated bags, applicable only to combustible and non-combustible waste)

Facility Name	Location	Garbage That Can Be Brought In	Reception Weekdays	Phone
Mineyama Clean Center	Mineyamacho Naiki 908	Burnable Trash, Large Burnable Trash, Recyclable Trash, Hazardous Waste	Monday to Saturday (incl. holidays)	62-4626
Mineyama Final Disposal Site	Mineyamacho Naiki 800	Non-Burnable Trash, Large Non-Burnable Trash	Tuesdays and Thursdays (excl. holidays), every 4th Sunday	62-3336
Omiya Final Disposal Site	Omiyacho Misaka 5-1	Non-Burnable Trash, Large Non-Burnable Trash, Hazardous Waste, Pruned Branches and Leaves	Mondays, Wednesdays, Fridays (excl. holidays), every 1st Sunday	64-4866
Amino Final Disposal Site	Aminocho Mitsu 378-1	Non-Burnable Trash, Large Non-Burnable Trash, Hazardous Waste	Tuesdays, Wednesdays, Fridays (excl. holidays), every 3rd Sunday	72-4755
Kumihama Final Disposal Site	Kumihamacho 98-1	Non-Burnable Trash, Large Non-Burnable Trash, Hazardous Waste	Mondays, Thursdays, Saturdays (excl. holidays), every 2nd and 5th Sunday	82-0846

Recycle

Recycle for reuse as resources

Refuse

Refuse items that become garbage

Reuse

Use items repeatedly instead of discarding them

Reduce

Be creative in reducing waste

Used small appliances

Used small appliances should be separated for recycling and placed in the small appliance collection boxes located at the final disposal sites, the Citizens Affairs Bureau, and local community centers.

(Box slot size: 60 cm x 25 cm x 60 cm)

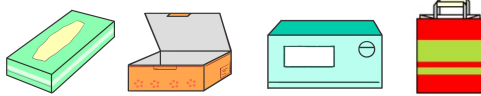
Tempura Oil (Used Cooking Oil)

Used cooking oil should be placed in containers set up by the "Local Energy Project" (an initiative by the NPO Econet Tango and Onishi Eisei Co., Ltd.) or in the collection containers located at Kyotango-Omiya Station, Yuhigaura-Kitsuonsen Station, and Shotenkyo Station.

Newspapers, Magazines, Cardboard, Paper Cartons



Mixed Paper



Donate to Paper Recycling Groups such as Craft Circles, PTAs, and Neighborhood Associations.

Inquiries About Waste Disposal: Kyotango City Life Environment Section (☎0772-69-0240)

Collection Area
Amino
Kitaoji

2025 Kyotango City Household Garbage Collection Calendar

Please place your trash on collection day at the designated collection station
before 8 AM.
(Trash placed at a later time will not be collected.)

Trash from businesses and restaurants cannot be placed at the stations.
It must be either entrusted to a city-authorized general trash collection and transportation service provider or brought to the city processing facility by the business itself.

Burnable Trash ※in designated bags	Non-burnable Trash ※in designated bags	Container and Packaging Plastics	Styrofoam
---------------------------------------	---	----------------------------------	-----------

Hazardous Waste (Fluorescent Lamps and Dry Batteries)	Container and Packaging Plastics	Styrofoam
---	----------------------------------	-----------

Empty Cans	Empty Bottles	PET Bottles
------------	---------------	-------------

White Acceptance days at the Mineyama Final Disposal Site

April						
Sun	Mon	Tue	Wed	Thu	Fri	Sat
		1	2	3	4	5
6	7	8	9	10	11	12
13	14	15	16	17	18	19
20	21	22	23	24	25	26
27	28	29	30			

May						
Sun	Mon	Tue	Wed	Thu	Fri	Sat
				1	2	3
4	5	6	7	8	9	10
11	12	13	14	15	16	17
18	19	20	21	22	23	24
25	26	27	28	29	30	31

June						
Sun	Mon	Tue	Wed	Thu	Fri	Sat
1	2	3	4	5	6	7
8	9	10	11	12	13	14
15	16	17	18	19	20	21
22	23	24	25	26	27	28
29	30					

July						
Sun	Mon	Tue	Wed	Thu	Fri	Sat
		1	2	3	4	5
6	7	8	9	10	11	12
13	14	15	16	17	18	19
20	21	22	23	24	25	26
27	28	29	30	31		

August						
Sun	Mon	Tue	Wed	Thu	Fri	Sat
					1	2
3	4	5	6	7	8	9
10	11	12	13	14	15	16
17	18	19	20	21	22	23
24	25	26	27	28	29	30
31						

September						
Sun	Mon	Tue	Wed	Thu	Fri	Sat
	1	2	3	4	5	6
7	8	9	10	11	12	13
14	15	16	17	18	19	20
21	22	23	24	25	26	27
28	29	30				

October						
Sun	Mon	Tue	Wed	Thu	Fri	Sat
			1	2	3	4
5	6	7	8	9	10	11
12	13	14	15	16	17	18
19	20	21	22	23	24	25
26	27	28	29	30	31	

November						
Sun	Mon	Tue	Wed	Thu	Fri	Sat
						1
2	3	4	5	6	7	8
9	10	11	12	13	14	15
16	17	18	19	20	21	22
23	24	25	26	27	28	29
30						

December						
Sun	Mon	Tue	Wed	Thu	Fri	Sat
	1	2	3	4	5	6
7	8	9	10	11	12	13
14	15	16	17	18	19	20
21	22	23	24	25	26	27
28	29	30	31			

January						
Sun	Mon	Tue	Wed	Thu	Fri	Sat
				1	2	3
4	5	6	7	8	9	10
11	12	13	14	15	16	17
18	19	20	21	22	23	24
25	26	27	28	29	30	31

February						
Sun	Mon	Tue	Wed	Thu	Fri	Sat
1	2	3	4	5	6	7
8	9	10	11	12	13	14
15	16	17	18	19	20	21
22	23	24	25	26	27	28

March						
Sun	Mon	Tue	Wed	Thu	Fri	Sat
1	2	3	4	5	6	7
8	9	10	11	12	13	14
15	16	17	18	19	20	21
22	23	24	25	26	27	28
29	30	31				

Garbage Processing Facility

- Reception Hours: 9:00 AM to 4:30 PM (Closed from December 31 to January 3)
- Drop-off Fee: ¥220 for up to 20 kg, an additional ¥110 for every 10 kg over that. (No fee if brought in city-designated bags, applicable only to combustible and non-combustible waste)

Facility Name	Location	Garbage That Can Be Brought In	Reception Weekdays	Phone
Mineyama Clean Center	Mineyamacho Naiki 908	Burnable Trash, Large Burnable Trash, Recyclable Trash, Hazardous Waste	Monday to Saturday (incl. holidays)	62-4626
Mineyama Final Disposal Site	Mineyamacho Naiki 800	Non-Burnable Trash, Large Non-Burnable Trash	Tuesdays and Thursdays (excl. holidays), every 4th Sunday	62-3336
Omiya Final Disposal Site	Omiyacho Misaka 5-1	Non-Burnable Trash, Large Non-Burnable Trash, Hazardous Waste, Pruned Branches and Leaves	Mondays, Wednesdays, Fridays (excl. holidays), every 1st Sunday	64-4866
Amino Final Disposal Site	Aminocho Mitsu 378-1	Non-Burnable Trash, Large Non-Burnable Trash, Hazardous Waste	Tuesdays, Wednesdays, Fridays (excl. holidays), every 3rd Sunday	72-4755
Kumihama Final Disposal Site	Kumihamacho 98-1	Non-Burnable Trash, Large Non-Burnable Trash, Hazardous Waste	Mondays, Thursdays, Saturdays (excl. holidays), every 2nd and 5th Sunday	82-0846

Recycle

Recycle for reuse as resources

Refuse

Refuse items that become garbage

Reuse

Use items repeatedly instead of discarding them

Reduce

Be creative in reducing waste

Used small appliances
Used small appliances should be separated for recycling and placed in the small appliance collection boxes located at the final disposal sites, the Citizens Affairs Bureau, and local community centers.

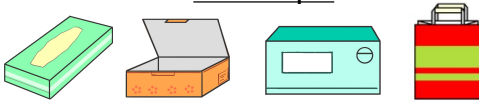
(Box slot size: 60 cm x 25 cm x 60 cm)

Tempura Oil (Used Cooking Oil)
Used cooking oil should be placed in containers set up by the "Local Energy Project" (an initiative by the NPO Econet Tango and Onishi Eisei Co., Ltd.) or in the collection containers located at Kyotango-Omiya Station, Yuhigaura-Kitsuonsen Station, and Shotenkyo Station.

Newspapers, Magazines, Cardboard, Paper Cartons



Mixed Paper



Donate to Paper Recycling Groups such as Craft Circles, PTAs, and Neighborhood Associations.

Inquiries About Waste Disposal: Kyotango City Life Environment Section (230772-69-0240)

Collection Area
Amino
Kitsu, Hamazume, Shioe

2025 Kyotango City Household Garbage Collection Calendar

Please place your trash **on collection day** at the designated collection station
before 8 AM.
 (Trash placed at a later time will not be collected.)

Trash from businesses and restaurants cannot be placed at the stations.
 It must be either entrusted to a city-authorized general trash collection and transportation service provider or brought to the city processing facility by the business itself.

Burnable Trash ※in designated bags	Non-burnable Trash ※in designated bags	Container and Packaging Plastics	Styrofoam
---------------------------------------	---	----------------------------------	-----------

Hazardous Waste (Fluorescent Lamps and Dry Batteries)	Container and Packaging Plastics	Styrofoam
---	----------------------------------	-----------

Empty Cans	Empty Bottles	PET Bottles
------------	---------------	-------------

White Acceptance days at the Mineyama Final Disposal Site

April						
Sun	Mon	Tue	Wed	Thu	Fri	Sat
		1	2	3	4	5
6	7	8	9	10	11	12
13	14	15	16	17	18	19
20	21	22	23	24	25	26
27	28	29	30			

May						
Sun	Mon	Tue	Wed	Thu	Fri	Sat
				1	2	3
4	5	6	7	8	9	10
11	12	13	14	15	16	17
18	19	20	21	22	23	24
25	26	27	28	29	30	31

June						
Sun	Mon	Tue	Wed	Thu	Fri	Sat
1	2	3	4	5	6	7
8	9	10	11	12	13	14
15	16	17	18	19	20	21
22	23	24	25	26	27	28
29	30					

July						
Sun	Mon	Tue	Wed	Thu	Fri	Sat
		1	2	3	4	5
6	7	8	9	10	11	12
13	14	15	16	17	18	19
20	21	22	23	24	25	26
27	28	29	30	31		

August						
Sun	Mon	Tue	Wed	Thu	Fri	Sat
					1	2
3	4	5	6	7	8	9
10	11	12	13	14	15	16
17	18	19	20	21	22	23
24	25	26	27	28	29	30
31						

September						
Sun	Mon	Tue	Wed	Thu	Fri	Sat
	1	2	3	4	5	6
7	8	9	10	11	12	13
14	15	16	17	18	19	20
21	22	23	24	25	26	27
28	29	30				

October						
Sun	Mon	Tue	Wed	Thu	Fri	Sat
			1	2	3	4
5	6	7	8	9	10	11
12	13	14	15	16	17	18
19	20	21	22	23	24	25
26	27	28	29	30	31	

November						
Sun	Mon	Tue	Wed	Thu	Fri	Sat
						1
2	3	4	5	6	7	8
9	10	11	12	13	14	15
16	17	18	19	20	21	22
23	24	25	26	27	28	29
30						

December						
Sun	Mon	Tue	Wed	Thu	Fri	Sat
	1	2	3	4	5	6
7	8	9	10	11	12	13
14	15	16	17	18	19	20
21	22	23	24	25	26	27
28	29	30	31			

January						
Sun	Mon	Tue	Wed	Thu	Fri	Sat
				1	2	3
4	5	6	7	8	9	10
11	12	13	14	15	16	17
18	19	20	21	22	23	24
25	26	27	28	29	30	31

February						
Sun	Mon	Tue	Wed	Thu	Fri	Sat
1	2	3	4	5	6	7
8	9	10	11	12	13	14
15	16	17	18	19	20	21
22	23	24	25	26	27	28

March						
Sun	Mon	Tue	Wed	Thu	Fri	Sat
1	2	3	4	5	6	7
8	9	10	11	12	13	14
15	16	17	18	19	20	21
22	23	24	25	26	27	28
29	30	31				

Garbage Processing Facility

- Reception Hours: 9:00 AM to 4:30 PM (Closed from December 31 to January 3)
- Drop-off Fee: ¥220 for up to 20 kg, an additional ¥110 for every 10 kg over that. (No fee if brought in city-designated bags, applicable only to combustible and non-combustible waste)

Facility Name	Location	Garbage That Can Be Brought In	Reception Weekdays	Phone
Mineyama Clean Center	Mineyamacho Naiki 908	Burnable Trash, Large Burnable Trash, Recyclable Trash, Hazardous Waste	Monday to Saturday (incl. holidays)	62-4626
Mineyama Final Disposal Site	Mineyamacho Naiki 800	Non-Burnable Trash, Large Non-Burnable Trash	Tuesdays and Thursdays (excl. holidays), every 4th Sunday	62-3336
Omiya Final Disposal Site	Omiyacho Misaka 5-1	Non-Burnable Trash, Large Non-Burnable Trash, Hazardous Waste, Pruned Branches and Leaves	Mondays, Wednesdays, Fridays (excl. holidays), every 1st Sunday	64-4866
Amino Final Disposal Site	Aminochō Mitsu 378-1	Non-Burnable Trash, Large Non-Burnable Trash, Hazardous Waste	Tuesdays, Wednesdays, Fridays (excl. holidays), every 3rd Sunday	72-4755
Kumihama Final Disposal Site	Kumihamacho 98-1	Non-Burnable Trash, Large Non-Burnable Trash, Hazardous Waste	Mondays, Thursdays, Saturdays (excl. holidays), every 2nd and 5th Sunday	82-0846

Recycle

Recycle for reuse as resources

Refuse

Refuse items that become garbage

Reuse

Use items repeatedly instead of discarding them

Reduce

Be creative in reducing waste

Used small appliances

Used small appliances should be separated for recycling and placed in the small appliance collection boxes located at the final disposal sites, the Citizens Affairs Bureau, and local community centers.

(Box slot size: 60 cm x 25 cm x 60 cm)

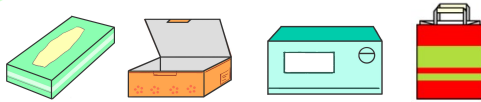
Tempura Oil (Used Cooking Oil)

Used cooking oil should be placed in containers set up by the "Local Energy Project" (an initiative by the NPO Econet Tango and Onishi Eisei Co., Ltd.) or in the collection containers located at Kyotango-Omiya Station, Yuhigaura-Kitsuonsen Station, and Shotenkyo Station.

Newspapers, Magazines, Cardboard, Paper Cartons



Mixed Paper



Donate to Paper Recycling Groups such as Craft Circles, PTAs, and Neighborhood Associations.

Inquiries About Waste Disposal: Kyotango City Life Environment Section (☎0772-69-0240)

Collection Area
Tango
Shimo-Ukawa Sodeshi, Owa, Nakahama, Kyuso, Ueno, Taniuchi

2025 Kyotango City Household Garbage Collection Calendar

Please place your trash **on collection day** at the designated collection station
before 8 AM.
(Trash placed at a later time will not be collected.)

Trash from businesses and restaurants cannot be placed at the stations.
It must be either entrusted to a city-authorized general trash collection and transportation service provider or brought to the city processing facility by the business itself.

Burnable Trash ※in designated bags	Non-burnable Trash ※in designated bags	Container and Packaging Plastics	Styrofoam
--	--	---	------------------

Hazardous Waste (Fluorescent Lamps and Dry Batteries)	Container and Packaging Plastics	Styrofoam
--	---	------------------

Empty Cans	Empty Bottles	PET Bottles
-------------------	----------------------	--------------------

White Acceptance days at the Mineyama Final Disposal Site

April						
Sun	Mon	Tue	Wed	Thu	Fri	Sat
		1	2	3	4	5
6	7	8	9	10	11	12
13	14	15	16	17	18	19
20	21	22	23	24	25	26
27	28	29	30			

May						
Sun	Mon	Tue	Wed	Thu	Fri	Sat
				1	2	3
4	5	6	7	8	9	10
11	12	13	14	15	16	17
18	19	20	21	22	23	24
25	26	27	28	29	30	31

June						
Sun	Mon	Tue	Wed	Thu	Fri	Sat
1	2	3	4	5	6	7
8	9	10	11	12	13	14
15	16	17	18	19	20	21
22	23	24	25	26	27	28
29	30					

July						
Sun	Mon	Tue	Wed	Thu	Fri	Sat
		1	2	3	4	5
6	7	8	9	10	11	12
13	14	15	16	17	18	19
20	21	22	23	24	25	26
27	28	29	30	31		

August						
Sun	Mon	Tue	Wed	Thu	Fri	Sat
					1	2
3	4	5	6	7	8	9
10	11	12	13	14	15	16
17	18	19	20	21	22	23
24	25	26	27	28	29	30
31						

September						
Sun	Mon	Tue	Wed	Thu	Fri	Sat
	1	2	3	4	5	6
7	8	9	10	11	12	13
14	15	16	17	18	19	20
21	22	23	24	25	26	27
28	29	30				

October						
Sun	Mon	Tue	Wed	Thu	Fri	Sat
			1	2	3	4
5	6	7	8	9	10	11
12	13	14	15	16	17	18
19	20	21	22	23	24	25
26	27	28	29	30	31	

November						
Sun	Mon	Tue	Wed	Thu	Fri	Sat
						1
2	3	4	5	6	7	8
9	10	11	12	13	14	15
16	17	18	19	20	21	22
23	24	25	26	27	28	29
30						

December						
Sun	Mon	Tue	Wed	Thu	Fri	Sat
	1	2	3	4	5	6
7	8	9	10	11	12	13
14	15	16	17	18	19	20
21	22	23	24	25	26	27
28	29	30	31			

January						
Sun	Mon	Tue	Wed	Thu	Fri	Sat
				1	2	3
4	5	6	7	8	9	10
11	12	13	14	15	16	17
18	19	20	21	22	23	24
25	26	27	28	29	30	31

February						
Sun	Mon	Tue	Wed	Thu	Fri	Sat
1	2	3	4	5	6	7
8	9	10	11	12	13	14
15	16	17	18	19	20	21
22	23	24	25	26	27	28

March						
Sun	Mon	Tue	Wed	Thu	Fri	Sat
1	2	3	4	5	6	7
8	9	10	11	12	13	14
15	16	17	18	19	20	21
22	23	24	25	26	27	28
29	30	31				

Garbage Processing Facility

- Reception Hours: 9:00 AM to 4:30 PM (Closed from December 31 to January 3)
- Drop-off Fee: ¥220 for up to 20 kg, an additional ¥110 for every 10 kg over that. (No fee if brought in city-designated bags, applicable only to combustible and non-combustible waste)

Facility Name	Location	Garbage That Can Be Brought In	Reception Weekdays	Phone
Mineyama Clean Center	Mineyamacho Naiki 908	Burnable Trash, Large Burnable Trash, Recyclable Trash, Hazardous Waste	Monday to Saturday (incl. holidays)	62-4626
Mineyama Final Disposal Site	Mineyamacho Naiki 800	Non-Burnable Trash, Large Non-Burnable Trash	Tuesdays and Thursdays (excl. holidays), every 4th Sunday	62-3336
Omiya Final Disposal Site	Omiyacho Misaka 5-1	Non-Burnable Trash, Large Non-Burnable Trash, Hazardous Waste, Pruned Branches and Leaves	Mondays, Wednesdays, Fridays (excl. holidays), every 1st Sunday	64-4866
Amino Final Disposal Site	Aminocho Mitsu 378-1	Non-Burnable Trash, Large Non-Burnable Trash, Hazardous Waste	Tuesdays, Wednesdays, Fridays (excl. holidays), every 3rd Sunday	72-4755
Kumihama Final Disposal Site	Kumihamacho 98-1	Non-Burnable Trash, Large Non-Burnable Trash, Hazardous Waste	Mondays, Thursdays, Saturdays (excl. holidays), every 2nd and 5th Sunday	82-0846



Used small appliances
Used small appliances should be separated for recycling and placed in the small appliance collection boxes located at the final disposal sites, the Citizens Affairs Bureau, and local community centers.

(Box slot size: 60 cm x 25 cm x 60 cm)

Tempura Oil (Used Cooking Oil)
Used cooking oil should be placed in containers set up by the "Local Energy Project" (an initiative by the NPO Econet Tango and Onishi Eisei Co., Ltd.) or in the collection containers located at Kyotango-Omiya Station, Yuhigaura-Kitsuonsen Station, and Shotenkyo Station.

Newspapers, Magazines, Cardboard, Paper Cartons

Mixed Paper

Donate to Paper Recycling Groups such as Craft Circles, PTAs, and Neighborhood Associations.

Inquiries About Waste Disposal: Kyotango City Life Environment Section (230772-69-0240)

Collection Area
Tango
Taiza Oganari, Tani, Mukaiji

2025 Kyotango City Household Garbage Collection Calendar

Please place your trash on collection day at the designated collection station
before 8 AM.
(Trash placed at a later time will not be collected.)

Trash from businesses and restaurants cannot be placed at the stations.
It must be either entrusted to a city-authorized general trash collection and transportation service provider or brought to the city processing facility by the business itself.

Burnable Trash ※in designated bags	Non-burnable Trash ※in designated bags	Container and Packaging Plastics	Styrofoam
---------------------------------------	---	----------------------------------	-----------

Hazardous Waste (Fluorescent Lamps and Dry Batteries)	Container and Packaging Plastics	Styrofoam
---	----------------------------------	-----------

Empty Cans	Empty Bottles	PET Bottles
------------	---------------	-------------

White Acceptance days at the Mineyama Final Disposal Site

April						
Sun	Mon	Tue	Wed	Thu	Fri	Sat
		1	2	3	4	5
6	7	8	9	10	11	12
13	14	15	16	17	18	19
20	21	22	23	24	25	26
27	28	29	30			

May						
Sun	Mon	Tue	Wed	Thu	Fri	Sat
				1	2	3
4	5	6	7	8	9	10
11	12	13	14	15	16	17
18	19	20	21	22	23	24
25	26	27	28	29	30	31

June						
Sun	Mon	Tue	Wed	Thu	Fri	Sat
1	2	3	4	5	6	7
8	9	10	11	12	13	14
15	16	17	18	19	20	21
22	23	24	25	26	27	28
29	30					

July						
Sun	Mon	Tue	Wed	Thu	Fri	Sat
		1	2	3	4	5
6	7	8	9	10	11	12
13	14	15	16	17	18	19
20	21	22	23	24	25	26
27	28	29	30	31		

August						
Sun	Mon	Tue	Wed	Thu	Fri	Sat
					1	2
3	4	5	6	7	8	9
10	11	12	13	14	15	16
17	18	19	20	21	22	23
24	25	26	27	28	29	30
31						

September						
Sun	Mon	Tue	Wed	Thu	Fri	Sat
	1	2	3	4	5	6
7	8	9	10	11	12	13
14	15	16	17	18	19	20
21	22	23	24	25	26	27
28	29	30				

October						
Sun	Mon	Tue	Wed	Thu	Fri	Sat
			1	2	3	4
5	6	7	8	9	10	11
12	13	14	15	16	17	18
19	20	21	22	23	24	25
26	27	28	29	30	31	

November						
Sun	Mon	Tue	Wed	Thu	Fri	Sat
						1
2	3	4	5	6	7	8
9	10	11	12	13	14	15
16	17	18	19	20	21	22
23	24	25	26	27	28	29
30						

December						
Sun	Mon	Tue	Wed	Thu	Fri	Sat
	1	2	3	4	5	6
7	8	9	10	11	12	13
14	15	16	17	18	19	20
21	22	23	24	25	26	27
28	29	30	31			

January						
Sun	Mon	Tue	Wed	Thu	Fri	Sat
				1	2	3
4	5	6	7	8	9	10
11	12	13	14	15	16	17
18	19	20	21	22	23	24
25	26	27	28	29	30	31

February						
Sun	Mon	Tue	Wed	Thu	Fri	Sat
1	2	3	4	5	6	7
8	9	10	11	12	13	14
15	16	17	18	19	20	21
22	23	24	25	26	27	28

March						
Sun	Mon	Tue	Wed	Thu	Fri	Sat
1	2	3	4	5	6	7
8	9	10	11	12	13	14
15	16	17	18	19	20	21
22	23	24	25	26	27	28
29	30	31				

Garbage Processing Facility

- Reception Hours: 9:00 AM to 4:30 PM (Closed from December 31 to January 3)
- Drop-off Fee: ¥220 for up to 20 kg, an additional ¥110 for every 10 kg over that. (No fee if brought in city-designated bags, applicable only to combustible and non-combustible waste)

Facility Name	Location	Garbage That Can Be Brought In	Reception Weekdays	Phone
Mineyama Clean Center	Mineyamacho Naiki 908	Burnable Trash, Large Burnable Trash, Recyclable Trash, Hazardous Waste	Monday to Saturday (incl. holidays)	62-4626
Mineyama Final Disposal Site	Mineyamacho Naiki 800	Non-Burnable Trash, Large Non-Burnable Trash	Tuesdays and Thursdays (excl. holidays), every 4th Sunday	62-3336
Omiya Final Disposal Site	Omiyacho Misaka 5-1	Non-Burnable Trash, Large Non-Burnable Trash, Hazardous Waste, Pruned Branches and Leaves	Mondays, Wednesdays, Fridays (excl. holidays), every 1st Sunday	64-4866
Amino Final Disposal Site	Aminochō Mitsu 378-1	Non-Burnable Trash, Large Non-Burnable Trash, Hazardous Waste	Tuesdays, Wednesdays, Fridays (excl. holidays), every 3rd Sunday	72-4755
Kumihama Final Disposal Site	Kumihamacho 98-1	Non-Burnable Trash, Large Non-Burnable Trash, Hazardous Waste	Mondays, Thursdays, Saturdays (excl. holidays), every 2nd and 5th Sunday	82-0846

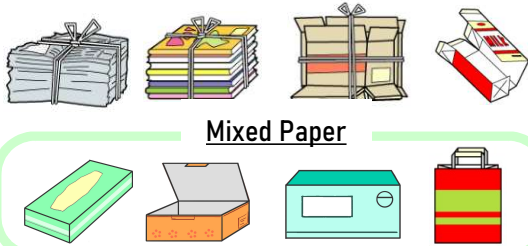


Used small appliances
Used small appliances should be separated for recycling and placed in the small appliance collection boxes located at the final disposal sites, the Citizens Affairs Bureau, and local community centers.

(Box slot size: 60 cm x 25 cm x 60 cm)

Tempura Oil (Used Cooking Oil)
Used cooking oil should be placed in containers set up by the "Local Energy Project" (an initiative by the NPO Econet Tango and Onishi Eisei Co., Ltd.) or in the collection containers located at Kyotango-Omiya Station, Yuhigaura-Kitsuonsen Station, and Shotenkyo Station.

Newspapers, Magazines, Cardboard, Paper Cartons



Donate to Paper Recycling Groups such as Craft Circles, PTAs, and Neighborhood Associations.

Inquiries About Waste Disposal: Kyotango City Life Environment Section (230772-69-0240)

Collection Area
Tango
Taiza Kodomari, Komanishi, Komahigashi, Sunagata

2025 Kyotango City Household Garbage Collection Calendar

Please place your trash on collection day at the designated collection station
before 8 AM.
(Trash placed at a later time will not be collected.)

Trash from businesses and restaurants cannot be placed at the stations.
It must be either entrusted to a city-authorized general trash collection and transportation service provider or brought to the city processing facility by the business itself.

Burnable Trash ※in designated bags	Non-burnable Trash ※in designated bags	Container and Packaging Plastics	Styrofoam
---------------------------------------	---	----------------------------------	-----------

Hazardous Waste (Fluorescent Lamps and Dry Batteries)	Container and Packaging Plastics	Styrofoam
---	----------------------------------	-----------

Empty Cans	Empty Bottles	PET Bottles
------------	---------------	-------------

White Acceptance days at the Mineyama Final Disposal Site

April						
Sun	Mon	Tue	Wed	Thu	Fri	Sat
		1	2	3	4	5
6	7	8	9	10	11	12
13	14	15	16	17	18	19
20	21	22	23	24	25	26
27	28	29	30			

May						
Sun	Mon	Tue	Wed	Thu	Fri	Sat
				1	2	3
4	5	6	7	8	9	10
11	12	13	14	15	16	17
18	19	20	21	22	23	24
25	26	27	28	29	30	31

June						
Sun	Mon	Tue	Wed	Thu	Fri	Sat
1	2	3	4	5	6	7
8	9	10	11	12	13	14
15	16	17	18	19	20	21
22	23	24	25	26	27	28
29	30					

July						
Sun	Mon	Tue	Wed	Thu	Fri	Sat
		1	2	3	4	5
6	7	8	9	10	11	12
13	14	15	16	17	18	19
20	21	22	23	24	25	26
27	28	29	30	31		

August						
Sun	Mon	Tue	Wed	Thu	Fri	Sat
					1	2
3	4	5	6	7	8	9
10	11	12	13	14	15	16
17	18	19	20	21	22	23
24	25	26	27	28	29	30
31						

September						
Sun	Mon	Tue	Wed	Thu	Fri	Sat
	1	2	3	4	5	6
7	8	9	10	11	12	13
14	15	16	17	18	19	20
21	22	23	24	25	26	27
28	29	30				

October						
Sun	Mon	Tue	Wed	Thu	Fri	Sat
			1	2	3	4
5	6	7	8	9	10	11
12	13	14	15	16	17	18
19	20	21	22	23	24	25
26	27	28	29	30	31	

November						
Sun	Mon	Tue	Wed	Thu	Fri	Sat
						1
2	3	4	5	6	7	8
9	10	11	12	13	14	15
16	17	18	19	20	21	22
23	24	25	26	27	28	29
30						

December						
Sun	Mon	Tue	Wed	Thu	Fri	Sat
	1	2	3	4	5	6
7	8	9	10	11	12	13
14	15	16	17	18	19	20
21	22	23	24	25	26	27
28	29	30	31			

January						
Sun	Mon	Tue	Wed	Thu	Fri	Sat
				1	2	3
4	5	6	7	8	9	10
11	12	13	14	15	16	17
18	19	20	21	22	23	24
25	26	27	28	29	30	31

February						
Sun	Mon	Tue	Wed	Thu	Fri	Sat
1	2	3	4	5	6	7
8	9	10	11	12	13	14
15	16	17	18	19	20	21
22	23	24	25	26	27	28

March						
Sun	Mon	Tue	Wed	Thu	Fri	Sat
1	2	3	4	5	6	7
8	9	10	11	12	13	14
15	16	17	18	19	20	21
22	23	24	25	26	27	28
29	30	31				

Garbage Processing Facility

- Reception Hours: 9:00 AM to 4:30 PM (Closed from December 31 to January 3)
- Drop-off Fee: ¥220 for up to 20 kg, an additional ¥110 for every 10 kg over that. (No fee if brought in city-designated bags, applicable only to combustible and non-combustible waste)

Facility Name	Location	Garbage That Can Be Brought In	Reception Weekdays	Phone
Mineyama Clean Center	Mineyamacho Naiki 908	Burnable Trash, Large Burnable Trash, Recyclable Trash, Hazardous Waste	Monday to Saturday (incl. holidays)	62-4626
Mineyama Final Disposal Site	Mineyamacho Naiki 800	Non-Burnable Trash, Large Non-Burnable Trash	Tuesdays and Thursdays (excl. holidays), every 4th Sunday	62-3336
Omiya Final Disposal Site	Omiyacho Misaka 5-1	Non-Burnable Trash, Large Non-Burnable Trash, Hazardous Waste, Pruned Branches and Leaves	Mondays, Wednesdays, Fridays (excl. holidays), every 1st Sunday	64-4866
Amino Final Disposal Site	Aminochō Mitsu 378-1	Non-Burnable Trash, Large Non-Burnable Trash, Hazardous Waste	Tuesdays, Wednesdays, Fridays (excl. holidays), every 3rd Sunday	72-4755
Kumihama Final Disposal Site	Kumihamacho 98-1	Non-Burnable Trash, Large Non-Burnable Trash, Hazardous Waste	Mondays, Thursdays, Saturdays (excl. holidays), every 2nd and 5th Sunday	82-0846

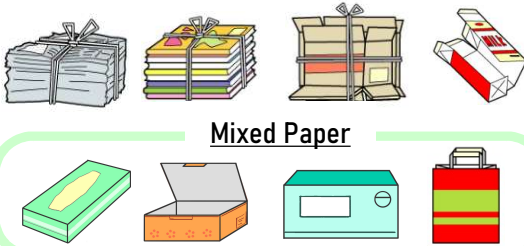


Used small appliances
Used small appliances should be separated for recycling and placed in the small appliance collection boxes located at the final disposal sites, the Citizens Affairs Bureau, and local community centers.

(Box slot size: 60 cm x 25 cm x 60 cm)

Tempura Oil (Used Cooking Oil)
Used cooking oil should be placed in containers set up by the "Local Energy Project" (an initiative by the NPO Econet Tango and Onishi Eisei Co., Ltd.) or in the collection containers located at Kyotango-Omiya Station, Yuhigaura-Kitsuonsen Station, and Shotenkyo Station.

Newspapers, Magazines, Cardboard, Paper Cartons



Donate to Paper Recycling Groups such as Craft Circles, PTAs, and Neighborhood Associations.

Inquiries About Waste Disposal: Kyotango City Life Environment Section (230772-69-0240)

Collection Area
Tango
Konoshiro Kami-Ukawa Hei, Inoue, Nakano, Onge, Kurauchi

2025 Kyotango City Household Garbage Collection Calendar

Please place your trash on collection day at the designated collection station
before 8 AM.
 (Trash placed at a later time will not be collected.)

Trash from businesses and restaurants cannot be placed at the stations.
 It must be either entrusted to a city-authorized general trash collection and transportation service provider or brought to the city processing facility by the business itself.

Burnable Trash ※in designated bags	Non-burnable Trash ※in designated bags	Container and Packaging Plastics	Styrofoam
--	--	----------------------------------	-----------

Hazardous Waste (Fluorescent Lamps and Dry Batteries)	Container and Packaging Plastics	Styrofoam
--	----------------------------------	-----------

Empty Cans	Empty Bottles	PET Bottles
-------------------	----------------------	--------------------

White Acceptance days at the Mineyama Final Disposal Site

April						
Sun	Mon	Tue	Wed	Thu	Fri	Sat
		1	2	3	4	5
6	7	8	9	10	11	12
13	14	15	16	17	18	19
20	21	22	23	24	25	26
27	28	29	30			

May						
Sun	Mon	Tue	Wed	Thu	Fri	Sat
				1	2	3
4	5	6	7	8	9	10
11	12	13	14	15	16	17
18	19	20	21	22	23	24
25	26	27	28	29	30	31

June						
Sun	Mon	Tue	Wed	Thu	Fri	Sat
1	2	3	4	5	6	7
8	9	10	11	12	13	14
15	16	17	18	19	20	21
22	23	24	25	26	27	28
29	30					

July						
Sun	Mon	Tue	Wed	Thu	Fri	Sat
		1	2	3	4	5
6	7	8	9	10	11	12
13	14	15	16	17	18	19
20	21	22	23	24	25	26
27	28	29	30	31		

August						
Sun	Mon	Tue	Wed	Thu	Fri	Sat
					1	2
3	4	5	6	7	8	9
10	11	12	13	14	15	16
17	18	19	20	21	22	23
24	25	26	27	28	29	30
31						

September						
Sun	Mon	Tue	Wed	Thu	Fri	Sat
	1	2	3	4	5	6
7	8	9	10	11	12	13
14	15	16	17	18	19	20
21	22	23	24	25	26	27
28	29	30				

October						
Sun	Mon	Tue	Wed	Thu	Fri	Sat
			1	2	3	4
5	6	7	8	9	10	11
12	13	14	15	16	17	18
19	20	21	22	23	24	25
26	27	28	29	30	31	

November						
Sun	Mon	Tue	Wed	Thu	Fri	Sat
						1
2	3	4	5	6	7	8
9	10	11	12	13	14	15
16	17	18	19	20	21	22
23	24	25	26	27	28	29
30						

December						
Sun	Mon	Tue	Wed	Thu	Fri	Sat
	1	2	3	4	5	6
7	8	9	10	11	12	13
14	15	16	17	18	19	20
21	22	23	24	25	26	27
28	29	30	31			

January						
Sun	Mon	Tue	Wed	Thu	Fri	Sat
				1	2	3
4	5	6	7	8	9	10
11	12	13	14	15	16	17
18	19	20	21	22	23	24
25	26	27	28	29	30	31

February						
Sun	Mon	Tue	Wed	Thu	Fri	Sat
1	2	3	4	5	6	7
8	9	10	11	12	13	14
15	16	17	18	19	20	21
22	23	24	25	26	27	28

March						
Sun	Mon	Tue	Wed	Thu	Fri	Sat
1	2	3	4	5	6	7
8	9	10	11	12	13	14
15	16	17	18	19	20	21
22	23	24	25	26	27	28
29	30	31				

Garbage Processing Facility

- Reception Hours: 9:00 AM to 4:30 PM (Closed from December 31 to January 3)
- Drop-off Fee: ¥220 for up to 20 kg, an additional ¥110 for every 10 kg over that. (No fee if brought in city-designated bags, applicable only to combustible and non-combustible waste)

Facility Name	Location	Garbage That Can Be Brought In	Reception Weekdays	Phone
Mineyama Clean Center	Mineyamacho Naiki 908	Burnable Trash, Large Burnable Trash, Recyclable Trash, Hazardous Waste	Monday to Saturday (incl. holidays)	62-4626
Mineyama Final Disposal Site	Mineyamacho Naiki 800	Non-Burnable Trash, Large Non-Burnable Trash	Tuesdays and Thursdays (excl. holidays), every 4th Sunday	62-3336
Omiya Final Disposal Site	Omiyacho Misaka 5-1	Non-Burnable Trash, Large Non-Burnable Trash, Hazardous Waste, Pruned Branches and Leaves	Mondays, Wednesdays, Fridays (excl. holidays), every 1st Sunday	64-4866
Amino Final Disposal Site	Aminocho Mitsu 378-1	Non-Burnable Trash, Large Non-Burnable Trash, Hazardous Waste	Tuesdays, Wednesdays, Fridays (excl. holidays), every 3rd Sunday	72-4755
Kumihama Final Disposal Site	Kumihamacho 98-1	Non-Burnable Trash, Large Non-Burnable Trash, Hazardous Waste	Mondays, Thursdays, Saturdays (excl. holidays), every 2nd and 5th Sunday	82-0846



Used small appliances
 Used small appliances should be separated for recycling and placed in the small appliance collection boxes located at the final disposal sites, the Citizens Affairs Bureau, and local community centers.

(Box slot size: 60 cm x 25 cm x 60 cm)

Tempura Oil (Used Cooking Oil)
 Used cooking oil should be placed in containers set up by the "Local Energy Project" (an initiative by the NPO Econet Tango and Onishi Eisei Co., Ltd.) or in the collection containers located at Kyotango-Omiya Station, Yuhigaura-Kitsuonsen Station, and Shotenkyo Station.

Newspapers, Magazines, Cardboard, Paper Cartons

Mixed Paper

Donate to Paper Recycling Groups such as Craft Circles, PTAs, and Neighborhood Associations.

Inquiries About Waste Disposal: Kyotango City Life Environment Section (☎0772-69-0240)

Collection Area
Tango
Ueyama

2025 Kyotango City Household Garbage Collection Calendar

Please place your trash on collection day at the designated collection station
before 8 AM.
(Trash placed at a later time will not be collected.)

Trash from businesses and restaurants cannot be placed at the stations.
It must be either entrusted to a city-authorized general trash collection and transportation service provider or brought to the city processing facility by the business itself.

Burnable Trash
※in designated bags

Non-burnable Trash
※in designated bags

Container and Packaging Plastics

Styrofoam

Empty Cans

Empty Bottles

PET Bottles

Hazardous Waste (Fluorescent Lamps and Dry Batteries)

White

Acceptance days at the Mineyama Final Disposal Site

April						
Sun	Mon	Tue	Wed	Thu	Fri	Sat
		1	2	3	4	5
6	7	8	9	10	11	12
13	14	15	16	17	18	19
20	21	22	23	24	25	26
27	28	29	30			

May						
Sun	Mon	Tue	Wed	Thu	Fri	Sat
				1	2	3
4	5	6	7	8	9	10
11	12	13	14	15	16	17
18	19	20	21	22	23	24
25	26	27	28	29	30	31

June						
Sun	Mon	Tue	Wed	Thu	Fri	Sat
1	2	3	4	5	6	7
8	9	10	11	12	13	14
15	16	17	18	19	20	21
22	23	24	25	26	27	28
29	30					

July						
Sun	Mon	Tue	Wed	Thu	Fri	Sat
		1	2	3	4	5
6	7	8	9	10	11	12
13	14	15	16	17	18	19
20	21	22	23	24	25	26
27	28	29	30	31		

August						
Sun	Mon	Tue	Wed	Thu	Fri	Sat
					1	2
3	4	5	6	7	8	9
10	11	12	13	14	15	16
17	18	19	20	21	22	23
24	25	26	27	28	29	30
31						

September						
Sun	Mon	Tue	Wed	Thu	Fri	Sat
	1	2	3	4	5	6
7	8	9	10	11	12	13
14	15	16	17	18	19	20
21	22	23	24	25	26	27
28	29	30				

October						
Sun	Mon	Tue	Wed	Thu	Fri	Sat
			1	2	3	4
5	6	7	8	9	10	11
12	13	14	15	16	17	18
19	20	21	22	23	24	25
26	27	28	29	30	31	

November						
Sun	Mon	Tue	Wed	Thu	Fri	Sat
						1
2	3	4	5	6	7	8
9	10	11	12	13	14	15
16	17	18	19	20	21	22
23	24	25	26	27	28	29
30						

December						
Sun	Mon	Tue	Wed	Thu	Fri	Sat
	1	2	3	4	5	6
7	8	9	10	11	12	13
14	15	16	17	18	19	20
21	22	23	24	25	26	27
28	29	30	31			

January						
Sun	Mon	Tue	Wed	Thu	Fri	Sat
				1	2	3
4	5	6	7	8	9	10
11	12	13	14	15	16	17
18	19	20	21	22	23	24
25	26	27	28	29	30	31

February						
Sun	Mon	Tue	Wed	Thu	Fri	Sat
1	2	3	4	5	6	7
8	9	10	11	12	13	14
15	16	17	18	19	20	21
22	23	24	25	26	27	28

March						
Sun	Mon	Tue	Wed	Thu	Fri	Sat
1	2	3	4	5	6	7
8	9	10	11	12	13	14
15	16	17	18	19	20	21
22	23	24	25	26	27	28
29	30	31				

Garbage Processing Facility

- Reception Hours: 9:00 AM to 4:30 PM (Closed from December 31 to January 3)
- Drop-off Fee: ¥220 for up to 20 kg, an additional ¥110 for every 10 kg over that. (No fee if brought in city-designated bags, applicable only to combustible and non-combustible waste)

Facility Name	Location	Garbage That Can Be Brought In	Reception Weekdays	Phone
Mineyama Clean Center	Mineyamacho Naiki 908	Burnable Trash, Large Burnable Trash, Recyclable Trash, Hazardous Waste	Monday to Saturday (incl. holidays)	62-4626
Mineyama Final Disposal Site	Mineyamacho Naiki 800	Non-Burnable Trash, Large Non-Burnable Trash	Tuesdays and Thursdays (excl. holidays), every 4th Sunday	62-3336
Omiya Final Disposal Site	Omiyacho Misaka 5-1	Non-Burnable Trash, Large Non-Burnable Trash, Hazardous Waste, Pruned Branches and Leaves	Mondays, Wednesdays, Fridays (excl. holidays), every 1st Sunday	64-4866
Amino Final Disposal Site	Aminocho Mitsu 378-1	Non-Burnable Trash, Large Non-Burnable Trash, Hazardous Waste	Tuesdays, Wednesdays, Fridays (excl. holidays), every 3rd Sunday	72-4755
Kumihama Final Disposal Site	Kumihamacho 98-1	Non-Burnable Trash, Large Non-Burnable Trash, Hazardous Waste	Mondays, Thursdays, Saturdays (excl. holidays), every 2nd and 5th Sunday	82-0846

Recycle

Recycle for reuse as resources

Refuse

Refuse items that become garbage

Reuse

Use items repeatedly instead of discarding them

Reduce

Be creative in reducing waste

Used small appliances

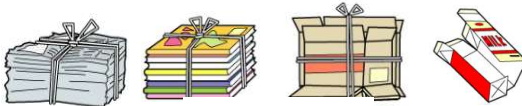
Used small appliances should be separated for recycling and placed in the small appliance collection boxes located at the final disposal sites, the Citizens Affairs Bureau, and local community centers.

(Box slot size: 60 cm x 25 cm x 60 cm)

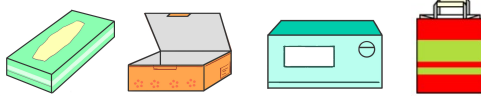
Tempura Oil (Used Cooking Oil)

Used cooking oil should be placed in containers set up by the "Local Energy Project" (an initiative by the NPO Econet Tango and Onishi Eisei Co., Ltd.) or in the collection containers located at Kyotango-Omiya Station, Yuhigaura-Kitsuonsen Station, and Shotenkyo Station.

Newspapers, Magazines, Cardboard, Paper Cartons



Mixed Paper



Donate to Paper Recycling Groups such as Craft Circles, PTAs, and Neighborhood Associations.

Inquiries About Waste Disposal: Kyotango City Life Environment Section (☎0772-69-0240)

Collection Area
Tango
Takano Takano, Miya, Makinotani, Gangoji, Ienotani, Fudeshi, Nonbara

2025 Kyotango City Household Garbage Collection Calendar

Please place your trash on collection day at the designated collection station
before 8 AM.
 (Trash placed at a later time will not be collected.)

Trash from businesses and restaurants cannot be placed at the stations.
 It must be either entrusted to a city-authorized general trash collection and transportation service provider or brought to the city processing facility by the business itself.

Burnable Trash
※in designated bags

Non-burnable Trash
※in designated bags

Container and Packaging Plastics

Styrofoam

Hazardous Waste (Fluorescent Lamps and Dry Batteries)

Container and Packaging Plastics

Styrofoam

Empty Cans

Empty Bottles

PET Bottles

White Acceptance days at the Mineyama Final Disposal Site

April							May							June						
Sun	Mon	Tue	Wed	Thu	Fri	Sat	Sun	Mon	Tue	Wed	Thu	Fri	Sat	Sun	Mon	Tue	Wed	Thu	Fri	Sat
		1	2	3	4	5					1	2	3	1	2	3	4	5	6	7
6	7	8	9	10	11	12	4	5	6	7	8	9	10	8	9	10	11	12	13	14
13	14	15	16	17	18	19	11	12	13	14	15	16	17	15	16	17	18	19	20	21
20	21	22	23	24	25	26	18	19	20	21	22	23	24	22	23	24	25	26	27	28
27	28	29	30				25	26	27	28	29	30	31	29	30					

July							August							September						
Sun	Mon	Tue	Wed	Thu	Fri	Sat	Sun	Mon	Tue	Wed	Thu	Fri	Sat	Sun	Mon	Tue	Wed	Thu	Fri	Sat
		1	2	3	4	5						1	2		1	2	3	4	5	6
6	7	8	9	10	11	12	3	4	5	6	7	8	9	7	8	9	10	11	12	13
13	14	15	16	17	18	19	10	11	12	13	14	15	16	14	15	16	17	18	19	20
20	21	22	23	24	25	26	17	18	19	20	21	22	23	21	22	23	24	25	26	27
27	28	29	30	31			24	25	26	27	28	29	30	28	29	30				
							31													

October							November							December						
Sun	Mon	Tue	Wed	Thu	Fri	Sat	Sun	Mon	Tue	Wed	Thu	Fri	Sat	Sun	Mon	Tue	Wed	Thu	Fri	Sat
			1	2	3	4							1		1	2	3	4	5	6
5	6	7	8	9	10	11	2	3	4	5	6	7	8	7	8	9	10	11	12	13
12	13	14	15	16	17	18	9	10	11	12	13	14	15	14	15	16	17	18	19	20
19	20	21	22	23	24	25	16	17	18	19	20	21	22	21	22	23	24	25	26	27
26	27	28	29	30	31		23	24	25	26	27	28	29	28	29	30	31			
							30													

January							February							March						
Sun	Mon	Tue	Wed	Thu	Fri	Sat	Sun	Mon	Tue	Wed	Thu	Fri	Sat	Sun	Mon	Tue	Wed	Thu	Fri	Sat
				1	2	3	1	2	3	4	5	6	7	1	2	3	4	5	6	7
4	5	6	7	8	9	10	8	9	10	11	12	13	14	8	9	10	11	12	13	14
11	12	13	14	15	16	17	15	16	17	18	19	20	21	15	16	17	18	19	20	21
18	19	20	21	22	23	24	22	23	24	25	26	27	28	22	23	24	25	26	27	28
25	26	27	28	29	30	31	29	30						29	30	31				

Garbage Processing Facility

- Reception Hours: 9:00 AM to 4:30 PM (Closed from December 31 to January 3)
- Drop-off Fee: ¥220 for up to 20 kg, an additional ¥110 for every 10 kg over that. (No fee if brought in city-designated bags, applicable only to combustible and non-combustible waste)

Facility Name	Location	Garbage That Can Be Brought In	Reception Weekdays	Phone
Mineyama Clean Center	Mineyamacho Naiki 908	Burnable Trash, Large Burnable Trash, Recyclable Trash, Hazardous Waste	Monday to Saturday (incl. holidays)	62-4626
Mineyama Final Disposal Site	Mineyamacho Naiki 800	Non-Burnable Trash, Large Non-Burnable Trash	Tuesdays and Thursdays (excl. holidays), every 4th Sunday	62-3336
Omiya Final Disposal Site	Omiyacho Misaka 5-1	Non-Burnable Trash, Large Non-Burnable Trash, Hazardous Waste, Pruned Branches and Leaves	Mondays, Wednesdays, Fridays (excl. holidays), every 1st Sunday	64-4866
Amino Final Disposal Site	Aminochō Mitsu 378-1	Non-Burnable Trash, Large Non-Burnable Trash, Hazardous Waste	Tuesdays, Wednesdays, Fridays (excl. holidays), every 3rd Sunday	72-4755
Kumihama Final Disposal Site	Kumihamacho 98-1	Non-Burnable Trash, Large Non-Burnable Trash, Hazardous Waste	Mondays, Thursdays, Saturdays (excl. holidays), every 2nd and 5th Sunday	82-0846

Recycle
Recycle for reuse as resources

Reuse
Use items repeatedly instead of discarding them

Reduce
Be creative in reducing waste

Refuse
Refuse items that become garbage

Used small appliances
Used small appliances should be separated for recycling and placed in the small appliance collection boxes located at the final disposal sites, the Citizens Affairs Bureau, and local community centers.
(Box slot size: 60 cm x 25 cm x 60 cm)

Tempura Oil (Used Cooking Oil)
Used cooking oil should be placed in containers set up by the "Local Energy Project" (an initiative by the NPO Econet Tango and Onishi Eisei Co., Ltd.) or in the collection containers located at Kyotango-Omiya Station, Yuhigaura-Kitsuonsen Station, and Shotenkyo Station.

Newspapers, Magazines, Cardboard, Paper Cartons

Mixed Paper

Donate to Paper Recycling Groups such as Craft Circles, PTAs, and Neighborhood Associations.

Inquiries About Waste Disposal: Kyotango City Life Environment Section (☎0772-69-0240)

Collection Area
Tango
Hata, Idani

2025 Kyotango City Household Garbage Collection Calendar

Please place your trash **on collection day** at the designated collection station
before 8 AM.
 (Trash placed at a later time will not be collected.)

Trash from businesses and restaurants cannot be placed at the stations.
 It must be either entrusted to a city-authorized general trash collection and transportation service provider or brought to the city processing facility by the business itself.

Burnable Trash
 ※in designated bags

Non-burnable Trash
 ※in designated bags

Container and Packaging Plastics

Styrofoam

Empty Cans

Empty Bottles

PET Bottles

Hazardous Waste (Fluorescent Lamps and Dry Batteries)

White

Acceptance days at the Mineyama Final Disposal Site

April						
Sun	Mon	Tue	Wed	Thu	Fri	Sat
		1	2	3	4	5
6	7	8	9	10	11	12
13	14	15	16	17	18	19
20	21	22	23	24	25	26
27	28	29	30			

May						
Sun	Mon	Tue	Wed	Thu	Fri	Sat
				1	2	3
4	5	6	7	8	9	10
11	12	13	14	15	16	17
18	19	20	21	22	23	24
25	26	27	28	29	30	31

June						
Sun	Mon	Tue	Wed	Thu	Fri	Sat
1	2	3	4	5	6	7
8	9	10	11	12	13	14
15	16	17	18	19	20	21
22	23	24	25	26	27	28
29	30					

July						
Sun	Mon	Tue	Wed	Thu	Fri	Sat
		1	2	3	4	5
6	7	8	9	10	11	12
13	14	15	16	17	18	19
20	21	22	23	24	25	26
27	28	29	30	31		

August						
Sun	Mon	Tue	Wed	Thu	Fri	Sat
					1	2
3	4	5	6	7	8	9
10	11	12	13	14	15	16
17	18	19	20	21	22	23
24	25	26	27	28	29	30
31						

September						
Sun	Mon	Tue	Wed	Thu	Fri	Sat
	1	2	3	4	5	6
7	8	9	10	11	12	13
14	15	16	17	18	19	20
21	22	23	24	25	26	27
28	29	30				

October						
Sun	Mon	Tue	Wed	Thu	Fri	Sat
			1	2	3	4
5	6	7	8	9	10	11
12	13	14	15	16	17	18
19	20	21	22	23	24	25
26	27	28	29	30	31	

November						
Sun	Mon	Tue	Wed	Thu	Fri	Sat
						1
2	3	4	5	6	7	8
9	10	11	12	13	14	15
16	17	18	19	20	21	22
23	24	25	26	27	28	29
30						

December						
Sun	Mon	Tue	Wed	Thu	Fri	Sat
	1	2	3	4	5	6
7	8	9	10	11	12	13
14	15	16	17	18	19	20
21	22	23	24	25	26	27
28	29	30	31			

January						
Sun	Mon	Tue	Wed	Thu	Fri	Sat
				1	2	3
4	5	6	7	8	9	10
11	12	13	14	15	16	17
18	19	20	21	22	23	24
25	26	27	28	29	30	31

February						
Sun	Mon	Tue	Wed	Thu	Fri	Sat
1	2	3	4	5	6	7
8	9	10	11	12	13	14
15	16	17	18	19	20	21
22	23	24	25	26	27	28

March						
Sun	Mon	Tue	Wed	Thu	Fri	Sat
1	2	3	4	5	6	7
8	9	10	11	12	13	14
15	16	17	18	19	20	21
22	23	24	25	26	27	28
29	30	31				

Garbage Processing Facility

- Reception Hours: 9:00 AM to 4:30 PM (Closed from December 31 to January 3)
- Drop-off Fee: ¥220 for up to 20 kg, an additional ¥110 for every 10 kg over that. (No fee if brought in city-designated bags, applicable only to combustible and non-combustible waste)

Facility Name	Location	Garbage That Can Be Brought In	Reception Weekdays	Phone
Mineyama Clean Center	Mineyamacho Naiki 908	Burnable Trash, Large Burnable Trash, Recyclable Trash, Hazardous Waste	Monday to Saturday (incl. holidays)	62-4626
Mineyama Final Disposal Site	Mineyamacho Naiki 800	Non-Burnable Trash, Large Non-Burnable Trash	Tuesdays and Thursdays (excl. holidays), every 4th Sunday	62-3336
Omiya Final Disposal Site	Omiyacho Misaka 5-1	Non-Burnable Trash, Large Non-Burnable Trash, Hazardous Waste, Pruned Branches and Leaves	Mondays, Wednesdays, Fridays (excl. holidays), every 1st Sunday	64-4866
Amino Final Disposal Site	Aminocho Mitsu 378-1	Non-Burnable Trash, Large Non-Burnable Trash, Hazardous Waste	Tuesdays, Wednesdays, Fridays (excl. holidays), every 3rd Sunday	72-4755
Kumihama Final Disposal Site	Kumihamacho 98-1	Non-Burnable Trash, Large Non-Burnable Trash, Hazardous Waste	Mondays, Thursdays, Saturdays (excl. holidays), every 2nd and 5th Sunday	82-0846

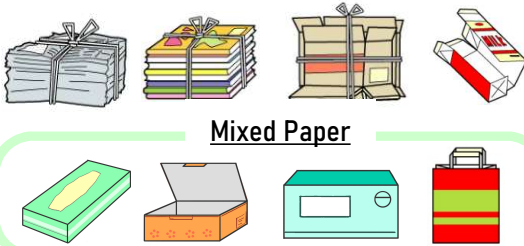


Used small appliances
 Used small appliances should be separated for recycling and placed in the small appliance collection boxes located at the final disposal sites, the Citizens Affairs Bureau, and local community centers.

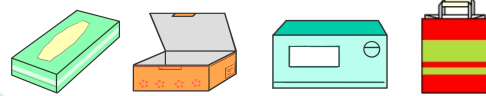
(Box slot size: 60 cm x 25 cm x 60 cm)

Tempura Oil (Used Cooking Oil)
 Used cooking oil should be placed in containers set up by the "Local Energy Project" (an initiative by the NPO Econet Tango and Onishi Eisei Co., Ltd.) or in the collection containers located at Kyotango-Omiya Station, Yuhigaura-Kitsuonsen Station, and Shotenkyo Station.

Newspapers, Magazines, Cardboard, Paper Cartons



Mixed Paper



Donate to Paper Recycling Groups such as Craft Circles, PTAs, and Neighborhood Associations.

Inquiries About Waste Disposal: Kyotango City Life Environment Section (☎0772-69-0240)

Collection Area
Tango
Toyosaka Joganji, Tokumitsu, Miyake, Oyama, Iwaki, Koreyasu, Yoshinaga, Yabata

2025 Kyotango City Household Garbage Collection Calendar

Please place your trash on collection day at the designated collection station
before 8 AM.
(Trash placed at a later time will not be collected.)

Trash from businesses and restaurants cannot be placed at the stations.
It must be either entrusted to a city-authorized general trash collection and transportation service provider or brought to the city processing facility by the business itself.

Burnable Trash ※in designated bags	Non-burnable Trash ※in designated bags	Container and Packaging Plastics	Styrofoam
--	--	---	------------------

Hazardous Waste (Fluorescent Lamps and Dry Batteries)	Container and Packaging Plastics	Styrofoam
--	---	------------------

Empty Cans	Empty Bottles	PET Bottles
-------------------	----------------------	--------------------

White Acceptance days at the Mineyama Final Disposal Site

April						
Sun	Mon	Tue	Wed	Thu	Fri	Sat
		1	2	3	4	5
6	7	8	9	10	11	12
13	14	15	16	17	18	19
20	21	22	23	24	25	26
27	28	29	30			

May						
Sun	Mon	Tue	Wed	Thu	Fri	Sat
				1	2	3
4	5	6	7	8	9	10
11	12	13	14	15	16	17
18	19	20	21	22	23	24
25	26	27	28	29	30	31

June						
Sun	Mon	Tue	Wed	Thu	Fri	Sat
1	2	3	4	5	6	7
8	9	10	11	12	13	14
15	16	17	18	19	20	21
22	23	24	25	26	27	28
29	30					

July						
Sun	Mon	Tue	Wed	Thu	Fri	Sat
		1	2	3	4	5
6	7	8	9	10	11	12
13	14	15	16	17	18	19
20	21	22	23	24	25	26
27	28	29	30	31		

August						
Sun	Mon	Tue	Wed	Thu	Fri	Sat
					1	2
3	4	5	6	7	8	9
10	11	12	13	14	15	16
17	18	19	20	21	22	23
24	25	26	27	28	29	30
31						

September						
Sun	Mon	Tue	Wed	Thu	Fri	Sat
	1	2	3	4	5	6
7	8	9	10	11	12	13
14	15	16	17	18	19	20
21	22	23	24	25	26	27
28	29	30				

October						
Sun	Mon	Tue	Wed	Thu	Fri	Sat
			1	2	3	4
5	6	7	8	9	10	11
12	13	14	15	16	17	18
19	20	21	22	23	24	25
26	27	28	29	30	31	

November						
Sun	Mon	Tue	Wed	Thu	Fri	Sat
						1
2	3	4	5	6	7	8
9	10	11	12	13	14	15
16	17	18	19	20	21	22
23	24	25	26	27	28	29
30						

December						
Sun	Mon	Tue	Wed	Thu	Fri	Sat
	1	2	3	4	5	6
7	8	9	10	11	12	13
14	15	16	17	18	19	20
21	22	23	24	25	26	27
28	29	30	31			

January						
Sun	Mon	Tue	Wed	Thu	Fri	Sat
				1	2	3
4	5	6	7	8	9	10
11	12	13	14	15	16	17
18	19	20	21	22	23	24
25	26	27	28	29	30	31

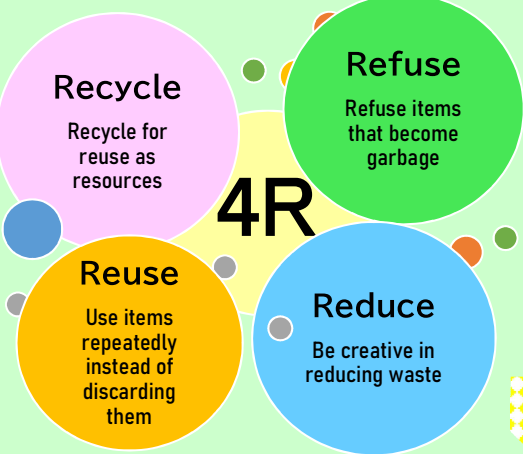
February						
Sun	Mon	Tue	Wed	Thu	Fri	Sat
1	2	3	4	5	6	7
8	9	10	11	12	13	14
15	16	17	18	19	20	21
22	23	24	25	26	27	28

March						
Sun	Mon	Tue	Wed	Thu	Fri	Sat
1	2	3	4	5	6	7
8	9	10	11	12	13	14
15	16	17	18	19	20	21
22	23	24	25	26	27	28
29	30	31				

Garbage Processing Facility

- Reception Hours: 9:00 AM to 4:30 PM (Closed from December 31 to January 3)
- Drop-off Fee: ¥220 for up to 20 kg, an additional ¥110 for every 10 kg over that. (No fee if brought in city-designated bags, applicable only to combustible and non-combustible waste)

Facility Name	Location	Garbage That Can Be Brought In	Reception Weekdays	Phone
Mineyama Clean Center	Mineyamacho Naiki 908	Burnable Trash, Large Burnable Trash, Recyclable Trash, Hazardous Waste	Monday to Saturday (incl. holidays)	62-4626
Mineyama Final Disposal Site	Mineyamacho Naiki 800	Non-Burnable Trash, Large Non-Burnable Trash	Tuesdays and Thursdays (excl. holidays), every 4th Sunday	62-3336
Omiya Final Disposal Site	Omiyacho Misaka 5-1	Non-Burnable Trash, Large Non-Burnable Trash, Hazardous Waste, Pruned Branches and Leaves	Mondays, Wednesdays, Fridays (excl. holidays), every 1st Sunday	64-4866
Amino Final Disposal Site	Aminocho Mitsu 378-1	Non-Burnable Trash, Large Non-Burnable Trash, Hazardous Waste	Tuesdays, Wednesdays, Fridays (excl. holidays), every 3rd Sunday	72-4755
Kumihama Final Disposal Site	Kumihamacho 98-1	Non-Burnable Trash, Large Non-Burnable Trash, Hazardous Waste	Mondays, Thursdays, Saturdays (excl. holidays), every 2nd and 5th Sunday	82-0846



Used small appliances
Used small appliances should be separated for recycling and placed in the small appliance collection boxes located at the final disposal sites, the Citizens Affairs Bureau, and local community centers.

(Box slot size: 60 cm x 25 cm x 60 cm)

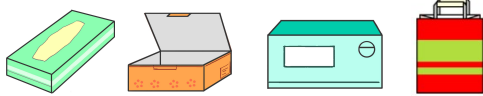
Tempura Oil (Used Cooking Oil)
Used cooking oil should be placed in containers set up by the "Local Energy Project" (an initiative by the NPO Econet Tango and Onishi Eisei Co., Ltd.) or in the collection containers located at Kyotango-Omiya Station, Yuhigaura-Kitsuonsen Station, and Shotenkyo Station.



Newspapers, Magazines, Cardboard, Paper Cartons



Mixed Paper



Donate to Paper Recycling Groups such as Craft Circles, PTAs, and Neighborhood Associations.

Inquiries About Waste Disposal: Kyotango City Life Environment Section (230772-69-0240)

Collection Area
Yasaka
Tonomura, Torakuji, Nakatsu, Tanaka, Nonaka, Yoshino

2025 Kyotango City Household Garbage Collection Calendar

Please place your trash on collection day at the designated collection station
before 8 AM.
(Trash placed at a later time will not be collected.)

Trash from businesses and restaurants cannot be placed at the stations.
It must be either entrusted to a city-authorized general trash collection and transportation service provider or brought to the city processing facility by the business itself.

Burnable Trash
※in designated bags

Non-burnable Trash
※in designated bags

PET Bottles Container and Packaging Plastics Styrofoam Empty Cans Empty Bottles

Hazardous Waste (Fluorescent Lamps and Dry Batteries)

Paper

White Acceptance days at the Mineyama Final Disposal Site

April

Sun	Mon	Tue	Wed	Thu	Fri	Sat
		1	2	3	4	5
6	7	8	9	10	11	12
13	14	15	16	17	18	19
20	21	22	23	24	25	26
27	28	29	30			

May

Sun	Mon	Tue	Wed	Thu	Fri	Sat
				1	2	3
4	5	6	7	8	9	10
11	12	13	14	15	16	17
18	19	20	21	22	23	24
25	26	27	28	29	30	31

June

Sun	Mon	Tue	Wed	Thu	Fri	Sat
1	2	3	4	5	6	7
8	9	10	11	12	13	14
15	16	17	18	19	20	21
22	23	24	25	26	27	28
29	30					

July

Sun	Mon	Tue	Wed	Thu	Fri	Sat
		1	2	3	4	5
6	7	8	9	10	11	12
13	14	15	16	17	18	19
20	21	22	23	24	25	26
27	28	29	30	31		

August

Sun	Mon	Tue	Wed	Thu	Fri	Sat
					1	2
3	4	5	6	7	8	9
10	11	12	13	14	15	16
17	18	19	20	21	22	23
24	25	26	27	28	29	30
31						

September

Sun	Mon	Tue	Wed	Thu	Fri	Sat
	1	2	3	4	5	6
7	8	9	10	11	12	13
14	15	16	17	18	19	20
21	22	23	24	25	26	27
28	29	30				

October

Sun	Mon	Tue	Wed	Thu	Fri	Sat
			1	2	3	4
5	6	7	8	9	10	11
12	13	14	15	16	17	18
19	20	21	22	23	24	25
26	27	28	29	30	31	

November

Sun	Mon	Tue	Wed	Thu	Fri	Sat
						1
2	3	4	5	6	7	8
9	10	11	12	13	14	15
16	17	18	19	20	21	22
23	24	25	26	27	28	29
30						

December

Sun	Mon	Tue	Wed	Thu	Fri	Sat
	1	2	3	4	5	6
7	8	9	10	11	12	13
14	15	16	17	18	19	20
21	22	23	24	25	26	27
28	29	30	31			

January

Sun	Mon	Tue	Wed	Thu	Fri	Sat
				1	2	3
4	5	6	7	8	9	10
11	12	13	14	15	16	17
18	19	20	21	22	23	24
25	26	27	28	29	30	31

February

Sun	Mon	Tue	Wed	Thu	Fri	Sat
1	2	3	4	5	6	7
8	9	10	11	12	13	14
15	16	17	18	19	20	21
22	23	24	25	26	27	28

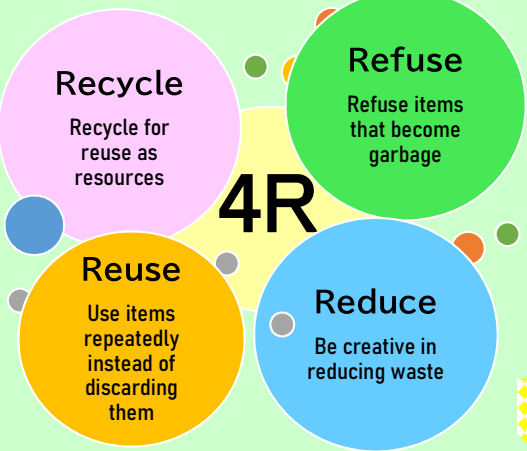
March

Sun	Mon	Tue	Wed	Thu	Fri	Sat
1	2	3	4	5	6	7
8	9	10	11	12	13	14
15	16	17	18	19	20	21
22	23	24	25	26	27	28
29	30	31				

Garbage Processing Facility

- Reception Hours: 9:00 AM to 4:30 PM (Closed from December 31 to January 3)
- Drop-off Fee: ¥220 for up to 20 kg, an additional ¥110 for every 10 kg over that. (No fee if brought in city-designated bags, applicable only to combustible and non-combustible waste)

Facility Name	Location	Garbage That Can Be Brought In	Reception Weekdays	Phone
Mineyama Clean Center	Mineyamacho Naiki 908	Burnable Trash, Large Burnable Trash, Recyclable Trash, Hazardous Waste	Monday to Saturday (incl. holidays)	62-4626
Mineyama Final Disposal Site	Mineyamacho Naiki 800	Non-Burnable Trash, Large Non-Burnable Trash	Tuesdays and Thursdays (excl. holidays), every 4th Sunday	62-3336
Omiya Final Disposal Site	Omiyacho Misaka 5-1	Non-Burnable Trash, Large Non-Burnable Trash, Hazardous Waste, Pruned Branches and Leaves	Mondays, Wednesdays, Fridays (excl. holidays), every 1st Sunday	64-4866
Amino Final Disposal Site	Aminochō Mitsu 378-1	Non-Burnable Trash, Large Non-Burnable Trash, Hazardous Waste	Tuesdays, Wednesdays, Fridays (excl. holidays), every 3rd Sunday	72-4755
Kumihama Final Disposal Site	Kumihamacho 98-1	Non-Burnable Trash, Large Non-Burnable Trash, Hazardous Waste	Mondays, Thursdays, Saturdays (excl. holidays), every 2nd and 5th Sunday	82-0846

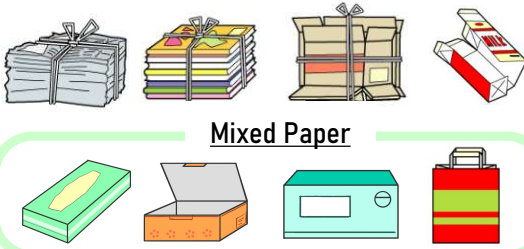


Used small appliances
Used small appliances should be separated for recycling and placed in the small appliance collection boxes located at the final disposal sites, the Citizens Affairs Bureau, and local community centers.

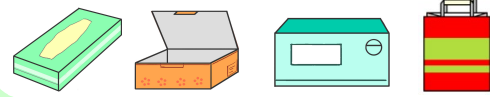
(Box slot size: 60 cm x 25 cm x 60 cm)

Tempura Oil (Used Cooking Oil)
Used cooking oil should be placed in containers set up by the "Local Energy Project" (an initiative by the NPO Econet Tango and Onishi Eisei Co., Ltd.) or in the collection containers located at Kyotango-Omiya Station, Yuhigaura-Kitsuonsen Station, and Shotenkyo Station.

Newspapers, Magazines, Cardboard, Paper Cartons



Mixed Paper



Donate to Paper Recycling Groups such as Craft Circles, PTAs, and Neighborhood Associations.

Inquiries About Waste Disposal: Kyotango City Life Environment Section (230772-69-0240)

Collection Area
Yasaka
Yoshisawa, Imono, Tsutsumi, Mizotani

2025 Kyotango City Household Garbage Collection Calendar

Please place your trash on collection day at the designated collection station
before 8 AM.
(Trash placed at a later time will not be collected.)

Trash from businesses and restaurants cannot be placed at the stations.
It must be either entrusted to a city-authorized general trash collection and transportation service provider or brought to the city processing facility by the business itself.

Burnable Trash
※in designated bags

Non-burnable Trash
※in designated bags

PET Bottles
Container and Packaging Plastics
Styrofoam
Empty Cans
Empty Bottles

Hazardous Waste (Fluorescent Lamps and Dry Batteries)

Paper

White Acceptance days at the Mineyama Final Disposal Site

April

Sun	Mon	Tue	Wed	Thu	Fri	Sat
		1	2	3	4	5
6	7	8	9	10	11	12
13	14	15	16	17	18	19
20	21	22	23	24	25	26
27	28	29	30			

May

Sun	Mon	Tue	Wed	Thu	Fri	Sat
				1	2	3
4	5	6	7	8	9	10
11	12	13	14	15	16	17
18	19	20	21	22	23	24
25	26	27	28	29	30	31

June

Sun	Mon	Tue	Wed	Thu	Fri	Sat
1	2	3	4	5	6	7
8	9	10	11	12	13	14
15	16	17	18	19	20	21
22	23	24	25	26	27	28
29	30					

July

Sun	Mon	Tue	Wed	Thu	Fri	Sat
		1	2	3	4	5
6	7	8	9	10	11	12
13	14	15	16	17	18	19
20	21	22	23	24	25	26
27	28	29	30	31		

August

Sun	Mon	Tue	Wed	Thu	Fri	Sat
					1	2
3	4	5	6	7	8	9
10	11	12	13	14	15	16
17	18	19	20	21	22	23
24	25	26	27	28	29	30
31						

September

Sun	Mon	Tue	Wed	Thu	Fri	Sat
	1	2	3	4	5	6
7	8	9	10	11	12	13
14	15	16	17	18	19	20
21	22	23	24	25	26	27
28	29	30				

October

Sun	Mon	Tue	Wed	Thu	Fri	Sat
			1	2	3	4
5	6	7	8	9	10	11
12	13	14	15	16	17	18
19	20	21	22	23	24	25
26	27	28	29	30	31	

November

Sun	Mon	Tue	Wed	Thu	Fri	Sat
						1
2	3	4	5	6	7	8
9	10	11	12	13	14	15
16	17	18	19	20	21	22
23	24	25	26	27	28	29
30						

December

Sun	Mon	Tue	Wed	Thu	Fri	Sat
	1	2	3	4	5	6
7	8	9	10	11	12	13
14	15	16	17	18	19	20
21	22	23	24	25	26	27
28	29	30	31			

January

Sun	Mon	Tue	Wed	Thu	Fri	Sat
				1	2	3
4	5	6	7	8	9	10
11	12	13	14	15	16	17
18	19	20	21	22	23	24
25	26	27	28	29	30	31

February

Sun	Mon	Tue	Wed	Thu	Fri	Sat
1	2	3	4	5	6	7
8	9	10	11	12	13	14
15	16	17	18	19	20	21
22	23	24	25	26	27	28

March

Sun	Mon	Tue	Wed	Thu	Fri	Sat
1	2	3	4	5	6	7
8	9	10	11	12	13	14
15	16	17	18	19	20	21
22	23	24	25	26	27	28
29	30	31				

Garbage Processing Facility

- Reception Hours: 9:00 AM to 4:30 PM (Closed from December 31 to January 3)
- Drop-off Fee: ¥220 for up to 20 kg, an additional ¥110 for every 10 kg over that. (No fee if brought in city-designated bags, applicable only to combustible and non-combustible waste)

Facility Name	Location	Garbage That Can Be Brought In	Reception Weekdays	Phone
Mineyama Clean Center	Mineyamacho Naiki 908	Burnable Trash, Large Burnable Trash, Recyclable Trash, Hazardous Waste	Monday to Saturday (incl. holidays)	62-4626
Mineyama Final Disposal Site	Mineyamacho Naiki 800	Non-Burnable Trash, Large Non-Burnable Trash	Tuesdays and Thursdays (excl. holidays), every 4th Sunday	62-3336
Omiya Final Disposal Site	Omiyacho Misaka 5-1	Non-Burnable Trash, Large Non-Burnable Trash, Hazardous Waste, Pruned Branches and Leaves	Mondays, Wednesdays, Fridays (excl. holidays), every 1st Sunday	64-4866
Amino Final Disposal Site	Aminocho Mitsu 378-1	Non-Burnable Trash, Large Non-Burnable Trash, Hazardous Waste	Tuesdays, Wednesdays, Fridays (excl. holidays), every 3rd Sunday	72-4755
Kumihama Final Disposal Site	Kumihamacho 98-1	Non-Burnable Trash, Large Non-Burnable Trash, Hazardous Waste	Mondays, Thursdays, Saturdays (excl. holidays), every 2nd and 5th Sunday	82-0846



Used small appliances
Used small appliances should be separated for recycling and placed in the small appliance collection boxes located at the final disposal sites, the Citizens Affairs Bureau, and local community centers.
(Box slot size: 60 cm x 25 cm x 60 cm)

Tempura Oil (Used Cooking Oil)
Used cooking oil should be placed in containers set up by the "Local Energy Project" (an initiative by the NPO Econet Tango and Onishi Eisei Co., Ltd.) or in the collection containers located at Kyotango-Omiya Station, Yuhigaura-Kitsuonsen Station, and Shotenkyo Station.

Newspapers, Magazines, Cardboard, Paper Cartons
Mixed Paper
Donate to Paper Recycling Groups such as Craft Circles, PTAs, and Neighborhood Associations.

Collection Area
Yasaka
Funaki, Kurobe, Koda, Kunihisa, Inobe

2025 Kyotango City Household Garbage Collection Calendar

Please place your trash on collection day at the designated collection station
before 8 AM.
(Trash placed at a later time will not be collected.)

Trash from businesses and restaurants cannot be placed at the stations.
It must be either entrusted to a city-authorized general trash collection and transportation service provider or brought to the city processing facility by the business itself.

Burnable Trash
※in designated bags

Non-burnable Trash
※in designated bags

PET Bottles Container and Packaging Plastics Styrofoam Empty Cans Empty Bottles

Hazardous Waste (Fluorescent Lamps and Dry Batteries)

Paper

White Acceptance days at the Mineyama Final Disposal Site

April

Sun	Mon	Tue	Wed	Thu	Fri	Sat
		1	2	3	4	5
6	7	8	9	10	11	12
13	14	15	16	17	18	19
20	21	22	23	24	25	26
27	28	29	30			

May

Sun	Mon	Tue	Wed	Thu	Fri	Sat
				1	2	3
4	5	6	7	8	9	10
11	12	13	14	15	16	17
18	19	20	21	22	23	24
25	26	27	28	29	30	31

June

Sun	Mon	Tue	Wed	Thu	Fri	Sat
1	2	3	4	5	6	7
8	9	10	11	12	13	14
15	16	17	18	19	20	21
22	23	24	25	26	27	28
29	30					

July

Sun	Mon	Tue	Wed	Thu	Fri	Sat
		1	2	3	4	5
6	7	8	9	10	11	12
13	14	15	16	17	18	19
20	21	22	23	24	25	26
27	28	29	30	31		

August

Sun	Mon	Tue	Wed	Thu	Fri	Sat
					1	2
3	4	5	6	7	8	9
10	11	12	13	14	15	16
17	18	19	20	21	22	23
24	25	26	27	28	29	30
31						

September

Sun	Mon	Tue	Wed	Thu	Fri	Sat
	1	2	3	4	5	6
7	8	9	10	11	12	13
14	15	16	17	18	19	20
21	22	23	24	25	26	27
28	29	30				

October

Sun	Mon	Tue	Wed	Thu	Fri	Sat
			1	2	3	4
5	6	7	8	9	10	11
12	13	14	15	16	17	18
19	20	21	22	23	24	25
26	27	28	29	30	31	

November

Sun	Mon	Tue	Wed	Thu	Fri	Sat
						1
2	3	4	5	6	7	8
9	10	11	12	13	14	15
16	17	18	19	20	21	22
23	24	25	26	27	28	29
30						

December

Sun	Mon	Tue	Wed	Thu	Fri	Sat
	1	2	3	4	5	6
7	8	9	10	11	12	13
14	15	16	17	18	19	20
21	22	23	24	25	26	27
28	29	30	31			

January

Sun	Mon	Tue	Wed	Thu	Fri	Sat
				1	2	3
4	5	6	7	8	9	10
11	12	13	14	15	16	17
18	19	20	21	22	23	24
25	26	27	28	29	30	31

February

Sun	Mon	Tue	Wed	Thu	Fri	Sat
1	2	3	4	5	6	7
8	9	10	11	12	13	14
15	16	17	18	19	20	21
22	23	24	25	26	27	28

March

Sun	Mon	Tue	Wed	Thu	Fri	Sat
1	2	3	4	5	6	7
8	9	10	11	12	13	14
15	16	17	18	19	20	21
22	23	24	25	26	27	28
29	30	31				

Garbage Processing Facility

- Reception Hours: 9:00 AM to 4:30 PM (Closed from December 31 to January 3)
- Drop-off Fee: ¥220 for up to 20 kg, an additional ¥110 for every 10 kg over that. (No fee if brought in city-designated bags, applicable only to combustible and non-combustible waste)

Facility Name	Location	Garbage That Can Be Brought In	Reception Weekdays	Phone
Mineyama Clean Center	Mineyamacho Naiki 908	Burnable Trash, Large Burnable Trash, Recyclable Trash, Hazardous Waste	Monday to Saturday (incl. holidays)	62-4626
Mineyama Final Disposal Site	Mineyamacho Naiki 800	Non-Burnable Trash, Large Non-Burnable Trash	Tuesdays and Thursdays (excl. holidays), every 4th Sunday	62-3336
Omiya Final Disposal Site	Omiyacho Misaka 5-1	Non-Burnable Trash, Large Non-Burnable Trash, Hazardous Waste, Pruned Branches and Leaves	Mondays, Wednesdays, Fridays (excl. holidays), every 1st Sunday	64-4866
Amino Final Disposal Site	Aminocho Mitsu 378-1	Non-Burnable Trash, Large Non-Burnable Trash, Hazardous Waste	Tuesdays, Wednesdays, Fridays (excl. holidays), every 3rd Sunday	72-4755
Kumihama Final Disposal Site	Kumihamacho 98-1	Non-Burnable Trash, Large Non-Burnable Trash, Hazardous Waste	Mondays, Thursdays, Saturdays (excl. holidays), every 2nd and 5th Sunday	82-0846



Used small appliances
Used small appliances should be separated for recycling and placed in the small appliance collection boxes located at the final disposal sites, the Citizens Affairs Bureau, and local community centers.

(Box slot size: 60 cm x 25 cm x 60 cm)

Tempura Oil (Used Cooking Oil)
Used cooking oil should be placed in containers set up by the "Local Energy Project" (an initiative by the NPO Econet Tango and Onishi Eisei Co., Ltd.) or in the collection containers located at Kyotango-Omiya Station, Yuhigaura-Kitsuonsen Station, and Shotenkyo Station.

Newspapers, Magazines, Cardboard, Paper Cartons

Mixed Paper

Donate to Paper Recycling Groups such as Craft Circles, PTAs, and Neighborhood Associations.

Collection Area
Yasaka
Nakayama, Arare, Sugawa, Kurumidani, Otani

2025 Kyotango City Household Garbage Collection Calendar

Please place your trash on collection day at the designated collection station
before 8 AM.
(Trash placed at a later time will not be collected.)

Trash from businesses and restaurants cannot be placed at the stations.
It must be either entrusted to a city-authorized general trash collection and transportation service provider or brought to the city processing facility by the business itself.

Burnable Trash
※in designated bags

Non-burnable Trash
※in designated bags

PET Bottles Container and Packaging Plastics Styrofoam Empty Cans Empty Bottles

Hazardous Waste (Fluorescent Lamps and Dry Batteries)

Paper

White Acceptance days at the Mineyama Final Disposal Site

April						
Sun	Mon	Tue	Wed	Thu	Fri	Sat
		1	2	3	4	5
6	7	8	9	10	11	12
13	14	15	16	17	18	19
20	21	22	23	24	25	26
27	28	29	30			

May						
Sun	Mon	Tue	Wed	Thu	Fri	Sat
				1	2	3
4	5	6	7	8	9	10
11	12	13	14	15	16	17
18	19	20	21	22	23	24
25	26	27	28	29	30	31

June						
Sun	Mon	Tue	Wed	Thu	Fri	Sat
1	2	3	4	5	6	7
8	9	10	11	12	13	14
15	16	17	18	19	20	21
22	23	24	25	26	27	28
29	30					

July						
Sun	Mon	Tue	Wed	Thu	Fri	Sat
		1	2	3	4	5
6	7	8	9	10	11	12
13	14	15	16	17	18	19
20	21	22	23	24	25	26
27	28	29	30	31		

August						
Sun	Mon	Tue	Wed	Thu	Fri	Sat
					1	2
3	4	5	6	7	8	9
10	11	12	13	14	15	16
17	18	19	20	21	22	23
24	25	26	27	28	29	30
31						

September						
Sun	Mon	Tue	Wed	Thu	Fri	Sat
	1	2	3	4	5	6
7	8	9	10	11	12	13
14	15	16	17	18	19	20
21	22	23	24	25	26	27
28	29	30				

October						
Sun	Mon	Tue	Wed	Thu	Fri	Sat
			1	2	3	4
5	6	7	8	9	10	11
12	13	14	15	16	17	18
19	20	21	22	23	24	25
26	27	28	29	30	31	

November						
Sun	Mon	Tue	Wed	Thu	Fri	Sat
						1
2	3	4	5	6	7	8
9	10	11	12	13	14	15
16	17	18	19	20	21	22
23	24	25	26	27	28	29
30						

December						
Sun	Mon	Tue	Wed	Thu	Fri	Sat
	1	2	3	4	5	6
7	8	9	10	11	12	13
14	15	16	17	18	19	20
21	22	23	24	25	26	27
28	29	30	31			

January						
Sun	Mon	Tue	Wed	Thu	Fri	Sat
				1	2	3
4	5	6	7	8	9	10
11	12	13	14	15	16	17
18	19	20	21	22	23	24
25	26	27	28	29	30	31

February						
Sun	Mon	Tue	Wed	Thu	Fri	Sat
1	2	3	4	5	6	7
8	9	10	11	12	13	14
15	16	17	18	19	20	21
22	23	24	25	26	27	28

March						
Sun	Mon	Tue	Wed	Thu	Fri	Sat
1	2	3	4	5	6	7
8	9	10	11	12	13	14
15	16	17	18	19	20	21
22	23	24	25	26	27	28
29	30	31				

Garbage Processing Facility

- Reception Hours: 9:00 AM to 4:30 PM (Closed from December 31 to January 3)
- Drop-off Fee: ¥220 for up to 20 kg, an additional ¥110 for every 10 kg over that. (No fee if brought in city-designated bags, applicable only to combustible and non-combustible waste)

Facility Name	Location	Garbage That Can Be Brought In	Reception Weekdays	Phone
Mineyama Clean Center	Mineyamacho Naiki 908	Burnable Trash, Large Burnable Trash, Recyclable Trash, Hazardous Waste	Monday to Saturday (incl. holidays)	62-4626
Mineyama Final Disposal Site	Mineyamacho Naiki 800	Non-Burnable Trash, Large Non-Burnable Trash	Tuesdays and Thursdays (excl. holidays), every 4th Sunday	62-3336
Omiya Final Disposal Site	Omiyacho Misaka 5-1	Non-Burnable Trash, Large Non-Burnable Trash, Hazardous Waste, Pruned Branches and Leaves	Mondays, Wednesdays, Fridays (excl. holidays), every 1st Sunday	64-4866
Amino Final Disposal Site	Aminochō Mitsu 378-1	Non-Burnable Trash, Large Non-Burnable Trash, Hazardous Waste	Tuesdays, Wednesdays, Fridays (excl. holidays), every 3rd Sunday	72-4755
Kumihama Final Disposal Site	Kumihamacho 98-1	Non-Burnable Trash, Large Non-Burnable Trash, Hazardous Waste	Mondays, Thursdays, Saturdays (excl. holidays), every 2nd and 5th Sunday	82-0846



Used small appliances
Used small appliances should be separated for recycling and placed in the small appliance collection boxes located at the final disposal sites, the Citizens Affairs Bureau, and local community centers.

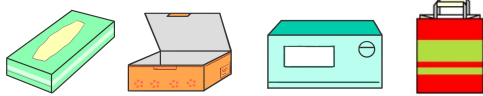
(Box slot size: 60 cm x 25 cm x 60 cm)

Tempura Oil (Used Cooking Oil)
Used cooking oil should be placed in containers set up by the "Local Energy Project" (an initiative by the NPO Econet Tango and Onishi Eisei Co., Ltd.) or in the collection containers located at Kyotango-Omiya Station, Yuhigaura-Kitsuonsen Station, and Shotenkyo Station.

Newspapers, Magazines, Cardboard, Paper Cartons



Mixed Paper



Donate to Paper Recycling Groups such as Craft Circles, PTAs, and Neighborhood Associations.

Inquiries About Waste Disposal: Kyotango City Life Environment Section (☎0772-69-0240)

Collection Area
Yasaka
Tottori Kibashi Wadano

2025 Kyotango City Household Garbage Collection Calendar

Please place your trash on collection day at the designated collection station
before 8 AM.
(Trash placed at a later time will not be collected.)

Trash from businesses and restaurants cannot be placed at the stations.
It must be either entrusted to a city-authorized general trash collection and transportation service provider or brought to the city processing facility by the business itself.

Burnable Trash
※in designated bags

Non-burnable Trash
※in designated bags

PET Bottles
Container and Packaging Plastics
Styrofoam
Empty Cans
Empty Bottles

Hazardous Waste (Fluorescent Lamps and Dry Batteries)

Paper

White

Acceptance days at the Mineyama Final Disposal Site

April						
Sun	Mon	Tue	Wed	Thu	Fri	Sat
		1	2	3	4	5
6	7	8	9	10	11	12
13	14	15	16	17	18	19
20	21	22	23	24	25	26
27	28	29	30			

May						
Sun	Mon	Tue	Wed	Thu	Fri	Sat
				1	2	3
4	5	6	7	8	9	10
11	12	13	14	15	16	17
18	19	20	21	22	23	24
25	26	27	28	29	30	31

June						
Sun	Mon	Tue	Wed	Thu	Fri	Sat
1	2	3	4	5	6	7
8	9	10	11	12	13	14
15	16	17	18	19	20	21
22	23	24	25	26	27	28
29	30					

July						
Sun	Mon	Tue	Wed	Thu	Fri	Sat
		1	2	3	4	5
6	7	8	9	10	11	12
13	14	15	16	17	18	19
20	21	22	23	24	25	26
27	28	29	30	31		

August						
Sun	Mon	Tue	Wed	Thu	Fri	Sat
					1	2
3	4	5	6	7	8	9
10	11	12	13	14	15	16
17	18	19	20	21	22	23
24	25	26	27	28	29	30
31						

September						
Sun	Mon	Tue	Wed	Thu	Fri	Sat
	1	2	3	4	5	6
7	8	9	10	11	12	13
14	15	16	17	18	19	20
21	22	23	24	25	26	27
28	29	30				

October						
Sun	Mon	Tue	Wed	Thu	Fri	Sat
			1	2	3	4
5	6	7	8	9	10	11
12	13	14	15	16	17	18
19	20	21	22	23	24	25
26	27	28	29	30	31	

November						
Sun	Mon	Tue	Wed	Thu	Fri	Sat
						1
2	3	4	5	6	7	8
9	10	11	12	13	14	15
16	17	18	19	20	21	22
23	24	25	26	27	28	29
30						

December						
Sun	Mon	Tue	Wed	Thu	Fri	Sat
	1	2	3	4	5	6
7	8	9	10	11	12	13
14	15	16	17	18	19	20
21	22	23	24	25	26	27
28	29	30	31			

January						
Sun	Mon	Tue	Wed	Thu	Fri	Sat
				1	2	3
4	5	6	7	8	9	10
11	12	13	14	15	16	17
18	19	20	21	22	23	24
25	26	27	28	29	30	31

February						
Sun	Mon	Tue	Wed	Thu	Fri	Sat
1	2	3	4	5	6	7
8	9	10	11	12	13	14
15	16	17	18	19	20	21
22	23	24	25	26	27	28

March						
Sun	Mon	Tue	Wed	Thu	Fri	Sat
1	2	3	4	5	6	7
8	9	10	11	12	13	14
15	16	17	18	19	20	21
22	23	24	25	26	27	28
29	30	31				

Garbage Processing Facility

- Reception Hours: 9:00 AM to 4:30 PM (Closed from December 31 to January 3)
- Drop-off Fee: ¥220 for up to 20 kg, an additional ¥110 for every 10 kg over that. (No fee if brought in city-designated bags, applicable only to combustible and non-combustible waste)

Facility Name	Location	Garbage That Can Be Brought In	Reception Weekdays	Phone
Mineyama Clean Center	Mineyamacho Naiki 908	Burnable Trash, Large Burnable Trash, Recyclable Trash, Hazardous Waste	Monday to Saturday (incl. holidays)	62-4626
Mineyama Final Disposal Site	Mineyamacho Naiki 800	Non-Burnable Trash, Large Non-Burnable Trash	Tuesdays and Thursdays (excl. holidays), every 4th Sunday	62-3336
Omiya Final Disposal Site	Omiyacho Misaka 5-1	Non-Burnable Trash, Large Non-Burnable Trash, Hazardous Waste, Pruned Branches and Leaves	Mondays, Wednesdays, Fridays (excl. holidays), every 1st Sunday	64-4866
Amino Final Disposal Site	Aminocho Mitsu 378-1	Non-Burnable Trash, Large Non-Burnable Trash, Hazardous Waste	Tuesdays, Wednesdays, Fridays (excl. holidays), every 3rd Sunday	72-4755
Kumihama Final Disposal Site	Kumihamacho 98-1	Non-Burnable Trash, Large Non-Burnable Trash, Hazardous Waste	Mondays, Thursdays, Saturdays (excl. holidays), every 2nd and 5th Sunday	82-0846

Recycle
Recycle for reuse as resources

Refuse
Refuse items that become garbage

Reuse
Use items repeatedly instead of discarding them

Reduce
Be creative in reducing waste

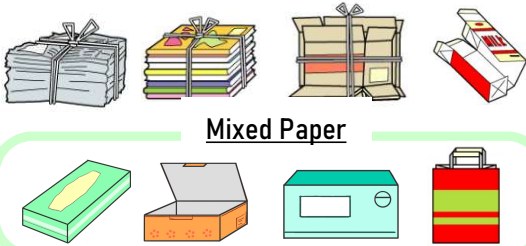
4R

Used small appliances
Used small appliances should be separated for recycling and placed in the small appliance collection boxes located at the final disposal sites, the Citizens Affairs Bureau, and local community centers.

(Box slot size: 60 cm x 25 cm x 60 cm)

Tempura Oil (Used Cooking Oil)
Used cooking oil should be placed in containers set up by the "Local Energy Project" (an initiative by the NPO Econet Tango and Onishi Eisei Co., Ltd.) or in the collection containers located at Kyotango-Omiya Station, Yuhigaura-Kitsuonsen Station, and Shotenkyo Station.

Newspapers, Magazines, Cardboard, Paper Cartons



Mixed Paper

Donate to Paper Recycling Groups such as Craft Circles, PTAs, and Neighborhood Associations.

Inquiries About Waste Disposal: Kyotango City Life Environment Section (☎0772-69-0240)

Collection Area
Yasaka
Ohara

2025 Kyotango City Household Garbage Collection Calendar

Please place your trash on collection day at the designated collection station
before 8 AM.
(Trash placed at a later time will not be collected.)

Trash from businesses and restaurants cannot be placed at the stations.
It must be either entrusted to a city-authorized general trash collection and transportation service provider or brought to the city processing facility by the business itself.

Burnable Trash
※in designated bags

Non-burnable Trash
※in designated bags

PET Bottles **Container and Packaging Plastics** **Styrofoam** **Empty Cans** **Empty Bottles**

Hazardous Waste (Fluorescent Lamps and Dry Batteries)

Paper

White Acceptance days at the Mineyama Final Disposal Site

Sun	Mon	Tue	Wed	Thu	Fri	Sat
		1	2	3	4	5
6	7	8	9	10	11	12
13	14	15	16	17	18	19
20	21	22	23	24	25	26
27	28	29	30			

Sun	Mon	Tue	Wed	Thu	Fri	Sat
				1	2	3
4	5	6	7	8	9	10
11	12	13	14	15	16	17
18	19	20	21	22	23	24
25	26	27	28	29	30	31

Sun	Mon	Tue	Wed	Thu	Fri	Sat
1	2	3	4	5	6	7
8	9	10	11	12	13	14
15	16	17	18	19	20	21
22	23	24	25	26	27	28
29	30					

Sun	Mon	Tue	Wed	Thu	Fri	Sat
		1	2	3	4	5
6	7	8	9	10	11	12
13	14	15	16	17	18	19
20	21	22	23	24	25	26
27	28	29	30	31		

Sun	Mon	Tue	Wed	Thu	Fri	Sat
					1	2
3	4	5	6	7	8	9
10	11	12	13	14	15	16
17	18	19	20	21	22	23
24	25	26	27	28	29	30
31						

Sun	Mon	Tue	Wed	Thu	Fri	Sat
	1	2	3	4	5	6
7	8	9	10	11	12	13
14	15	16	17	18	19	20
21	22	23	24	25	26	27
28	29	30				

Sun	Mon	Tue	Wed	Thu	Fri	Sat
			1	2	3	4
5	6	7	8	9	10	11
12	13	14	15	16	17	18
19	20	21	22	23	24	25
26	27	28	29	30	31	

Sun	Mon	Tue	Wed	Thu	Fri	Sat
						1
2	3	4	5	6	7	8
9	10	11	12	13	14	15
16	17	18	19	20	21	22
23	24	25	26	27	28	29
30						

Sun	Mon	Tue	Wed	Thu	Fri	Sat
	1	2	3	4	5	6
7	8	9	10	11	12	13
14	15	16	17	18	19	20
21	22	23	24	25	26	27
28	29	30	31			

Sun	Mon	Tue	Wed	Thu	Fri	Sat
				1	2	3
4	5	6	7	8	9	10
11	12	13	14	15	16	17
18	19	20	21	22	23	24
25	26	27	28	29	30	31

Sun	Mon	Tue	Wed	Thu	Fri	Sat
1	2	3	4	5	6	7
8	9	10	11	12	13	14
15	16	17	18	19	20	21
22	23	24	25	26	27	28

Sun	Mon	Tue	Wed	Thu	Fri	Sat
1	2	3	4	5	6	7
8	9	10	11	12	13	14
15	16	17	18	19	20	21
22	23	24	25	26	27	28
29	30	31				

Garbage Processing Facility

- Reception Hours: 9:00 AM to 4:30 PM (Closed from December 31 to January 3)
- Drop-off Fee: ¥220 for up to 20 kg, an additional ¥110 for every 10 kg over that. (No fee if brought in city-designated bags, applicable only to combustible and non-combustible waste)

Facility Name	Location	Garbage That Can Be Brought In	Reception Weekdays	Phone
Mineyama Clean Center	Mineyamacho Naiki 908	Burnable Trash, Large Burnable Trash, Recyclable Trash, Hazardous Waste	Monday to Saturday (incl. holidays)	62-4626
Mineyama Final Disposal Site	Mineyamacho Naiki 800	Non-Burnable Trash, Large Non-Burnable Trash	Tuesdays and Thursdays (excl. holidays), every 4th Sunday	62-3336
Omiya Final Disposal Site	Omiyacho Misaka 5-1	Non-Burnable Trash, Large Non-Burnable Trash, Hazardous Waste, Pruned Branches and Leaves	Mondays, Wednesdays, Fridays (excl. holidays), every 1st Sunday	64-4866
Amino Final Disposal Site	Aminocho Mitsu 378-1	Non-Burnable Trash, Large Non-Burnable Trash, Hazardous Waste	Tuesdays, Wednesdays, Fridays (excl. holidays), every 3rd Sunday	72-4755
Kumihama Final Disposal Site	Kumihamacho 98-1	Non-Burnable Trash, Large Non-Burnable Trash, Hazardous Waste	Mondays, Thursdays, Saturdays (excl. holidays), every 2nd and 5th Sunday	82-0846



Used small appliances
Used small appliances should be separated for recycling and placed in the small appliance collection boxes located at the final disposal sites, the Citizens Affairs Bureau, and local community centers.
(Box slot size: 60 cm x 25 cm x 60 cm)

Tempura Oil (Used Cooking Oil)
Used cooking oil should be placed in containers set up by the "Local Energy Project" (an initiative by the NPO Econet Tango and Onishi Eisei Co., Ltd.) or in the collection containers located at Kyotango-Omiya Station, Yuhigaura-Kitsuonsen Station, and Shotenkyo Station.

Newspapers, Magazines, Cardboard, Paper Cartons
Mixed Paper
Donate to Paper Recycling Groups such as Craft Circles, PTAs, and Neighborhood Associations.

Inquiries About Waste Disposal: Kyotango City Life Environment Section (☎0772-69-0240)

Collection Area
Yasaka
Horikoshi

2025 Kyotango City Household Garbage Collection Calendar

Please place your trash on collection day at the designated collection station
before 8 AM.
(Trash placed at a later time will not be collected.)

Trash from businesses and restaurants cannot be placed at the stations.
It must be either entrusted to a city-authorized general trash collection and transportation service provider or brought to the city processing facility by the business itself.

Burnable Trash
※in designated bags

Non-burnable Trash
※in designated bags

PET Bottles Container and Packaging Plastics Styrofoam Empty Cans Empty Bottles

Hazardous Waste (Fluorescent Lamps and Dry Batteries)

Paper

White

Acceptance days at the Mineyama Final Disposal Site

April						
Sun	Mon	Tue	Wed	Thu	Fri	Sat
		1	2	3	4	5
6	7	8	9	10	11	12
13	14	15	16	17	18	19
20	21	22	23	24	25	26
27	28	29	30			

May						
Sun	Mon	Tue	Wed	Thu	Fri	Sat
				1	2	3
4	5	6	7	8	9	10
11	12	13	14	15	16	17
18	19	20	21	22	23	24
25	26	27	28	29	30	31

June						
Sun	Mon	Tue	Wed	Thu	Fri	Sat
1	2	3	4	5	6	7
8	9	10	11	12	13	14
15	16	17	18	19	20	21
22	23	24	25	26	27	28
29	30					

July						
Sun	Mon	Tue	Wed	Thu	Fri	Sat
		1	2	3	4	5
6	7	8	9	10	11	12
13	14	15	16	17	18	19
20	21	22	23	24	25	26
27	28	29	30	31		

August						
Sun	Mon	Tue	Wed	Thu	Fri	Sat
					1	2
3	4	5	6	7	8	9
10	11	12	13	14	15	16
17	18	19	20	21	22	23
24	25	26	27	28	29	30
31						

September						
Sun	Mon	Tue	Wed	Thu	Fri	Sat
	1	2	3	4	5	6
7	8	9	10	11	12	13
14	15	16	17	18	19	20
21	22	23	24	25	26	27
28	29	30				

October						
Sun	Mon	Tue	Wed	Thu	Fri	Sat
			1	2	3	4
5	6	7	8	9	10	11
12	13	14	15	16	17	18
19	20	21	22	23	24	25
26	27	28	29	30	31	

November						
Sun	Mon	Tue	Wed	Thu	Fri	Sat
						1
2	3	4	5	6	7	8
9	10	11	12	13	14	15
16	17	18	19	20	21	22
23	24	25	26	27	28	29
30						

December						
Sun	Mon	Tue	Wed	Thu	Fri	Sat
	1	2	3	4	5	6
7	8	9	10	11	12	13
14	15	16	17	18	19	20
21	22	23	24	25	26	27
28	29	30	31			

January						
Sun	Mon	Tue	Wed	Thu	Fri	Sat
				1	2	3
4	5	6	7	8	9	10
11	12	13	14	15	16	17
18	19	20	21	22	23	24
25	26	27	28	29	30	31

February						
Sun	Mon	Tue	Wed	Thu	Fri	Sat
1	2	3	4	5	6	7
8	9	10	11	12	13	14
15	16	17	18	19	20	21
22	23	24	25	26	27	28

March						
Sun	Mon	Tue	Wed	Thu	Fri	Sat
1	2	3	4	5	6	7
8	9	10	11	12	13	14
15	16	17	18	19	20	21
22	23	24	25	26	27	28
29	30	31				

Garbage Processing Facility

- Reception Hours: 9:00 AM to 4:30 PM (Closed from December 31 to January 3)
- Drop-off Fee: ¥220 for up to 20 kg, an additional ¥110 for every 10 kg over that. (No fee if brought in city-designated bags, applicable only to combustible and non-combustible waste)

Facility Name	Location	Garbage That Can Be Brought In	Reception Weekdays	Phone
Mineyama Clean Center	Mineyamacho Naiki 908	Burnable Trash, Large Burnable Trash, Recyclable Trash, Hazardous Waste	Monday to Saturday (incl. holidays)	62-4626
Mineyama Final Disposal Site	Mineyamacho Naiki 800	Non-Burnable Trash, Large Non-Burnable Trash	Tuesdays and Thursdays (excl. holidays), every 4th Sunday	62-3336
Omiya Final Disposal Site	Omiyacho Misaka 5-1	Non-Burnable Trash, Large Non-Burnable Trash, Hazardous Waste, Pruned Branches and Leaves	Mondays, Wednesdays, Fridays (excl. holidays), every 1st Sunday	64-4866
Amino Final Disposal Site	Aminocho Mitsu 378-1	Non-Burnable Trash, Large Non-Burnable Trash, Hazardous Waste	Tuesdays, Wednesdays, Fridays (excl. holidays), every 3rd Sunday	72-4755
Kumihama Final Disposal Site	Kumihamacho 98-1	Non-Burnable Trash, Large Non-Burnable Trash, Hazardous Waste	Mondays, Thursdays, Saturdays (excl. holidays), every 2nd and 5th Sunday	82-0846



Used small appliances
Used small appliances should be separated for recycling and placed in the small appliance collection boxes located at the final disposal sites, the Citizens Affairs Bureau, and local community centers.
(Box slot size: 60 cm x 25 cm x 60 cm)

Tempura Oil (Used Cooking Oil)
Used cooking oil should be placed in containers set up by the "Local Energy Project" (an initiative by the NPO Econet Tango and Onishi Eisei Co., Ltd.) or in the collection containers located at Kyotango-Omiya Station, Yuhigaura-Kitsuonsen Station, and Shotenkyo Station.

Newspapers, Magazines, Cardboard, Paper Cartons

Mixed Paper

Donate to Paper Recycling Groups such as Craft Circles, PTAs, and Neighborhood Associations.

Inquiries About Waste Disposal: Kyotango City Life Environment Section (230772-69-0240)

Collection Area
Kumihama
Ikku Mukomachi, Juraku, Nakamachi, Doi, Higashihonmachi, Nishihonmachi

2025 Kyotango City Household Garbage Collection Calendar

Please place your trash on collection day at the designated collection station
before 8 AM.
(Trash placed at a later time will not be collected.)

Trash from businesses and restaurants cannot be placed at the stations.
It must be either entrusted to a city-authorized general trash collection and transportation service provider or brought to the city processing facility by the business itself.

Burnable Trash ※in designated bags	Hazardous Waste (Fluorescent Lamps and Dry Batteries)	Container and Packaging Plastics	Empty Cans	PET Bottles	Non-burnable Trash ※in designated bags	Container and Packaging Plastics	Empty Cans	PET Bottles
		Styrofoam	Empty Bottles			Styrofoam	Empty Bottles	

White Acceptance days at the Mineyama Final Disposal Site

April

Sun	Mon	Tue	Wed	Thu	Fri	Sat
		1	2	3	4	5
6	7	8	9	10	11	12
13	14	15	16	17	18	19
20	21	22	23	24	25	26
27	28	29	30			

May

Sun	Mon	Tue	Wed	Thu	Fri	Sat
				1	2	3
4	5	6	7	8	9	10
11	12	13	14	15	16	17
18	19	20	21	22	23	24
25	26	27	28	29	30	31

June

Sun	Mon	Tue	Wed	Thu	Fri	Sat
1	2	3	4	5	6	7
8	9	10	11	12	13	14
15	16	17	18	19	20	21
22	23	24	25	26	27	28
29	30					

July

Sun	Mon	Tue	Wed	Thu	Fri	Sat
		1	2	3	4	5
6	7	8	9	10	11	12
13	14	15	16	17	18	19
20	21	22	23	24	25	26
27	28	29	30	31		

August

Sun	Mon	Tue	Wed	Thu	Fri	Sat
					1	2
3	4	5	6	7	8	9
10	11	12	13	14	15	16
17	18	19	20	21	22	23
24	25	26	27	28	29	30
31						

September

Sun	Mon	Tue	Wed	Thu	Fri	Sat
	1	2	3	4	5	6
7	8	9	10	11	12	13
14	15	16	17	18	19	20
21	22	23	24	25	26	27
28	29	30				

October

Sun	Mon	Tue	Wed	Thu	Fri	Sat
			1	2	3	4
5	6	7	8	9	10	11
12	13	14	15	16	17	18
19	20	21	22	23	24	25
26	27	28	29	30	31	

November

Sun	Mon	Tue	Wed	Thu	Fri	Sat
						1
2	3	4	5	6	7	8
9	10	11	12	13	14	15
16	17	18	19	20	21	22
23	24	25	26	27	28	29
30						

December

Sun	Mon	Tue	Wed	Thu	Fri	Sat
	1	2	3	4	5	6
7	8	9	10	11	12	13
14	15	16	17	18	19	20
21	22	23	24	25	26	27
28	29	30	31			

January

Sun	Mon	Tue	Wed	Thu	Fri	Sat
				1	2	3
4	5	6	7	8	9	10
11	12	13	14	15	16	17
18	19	20	21	22	23	24
25	26	27	28	29	30	31

February

Sun	Mon	Tue	Wed	Thu	Fri	Sat
1	2	3	4	5	6	7
8	9	10	11	12	13	14
15	16	17	18	19	20	21
22	23	24	25	26	27	28

March

Sun	Mon	Tue	Wed	Thu	Fri	Sat
1	2	3	4	5	6	7
8	9	10	11	12	13	14
15	16	17	18	19	20	21
22	23	24	25	26	27	28
29	30	31				

Garbage Processing Facility

- Reception Hours: 9:00 AM to 4:30 PM (Closed from December 31 to January 3)
- Drop-off Fee: ¥220 for up to 20 kg, an additional ¥110 for every 10 kg over that. (No fee if brought in city-designated bags, applicable only to combustible and non-combustible waste)

Facility Name	Location	Garbage That Can Be Brought In	Reception Weekdays	Phone
Mineyama Clean Center	Mineyamacho Naiki 908	Burnable Trash, Large Burnable Trash, Recyclable Trash, Hazardous Waste	Monday to Saturday (incl. holidays)	62-4626
Mineyama Final Disposal Site	Mineyamacho Naiki 800	Non-Burnable Trash, Large Non-Burnable Trash	Tuesdays and Thursdays (excl. holidays), every 4th Sunday	62-3336
Omiya Final Disposal Site	Omiyacho Misaka 5-1	Non-Burnable Trash, Large Non-Burnable Trash, Hazardous Waste, Pruned Branches and Leaves	Mondays, Wednesdays, Fridays (excl. holidays), every 1st Sunday	64-4866
Amino Final Disposal Site	Aminocho Mitsu 378-1	Non-Burnable Trash, Large Non-Burnable Trash, Hazardous Waste	Tuesdays, Wednesdays, Fridays (excl. holidays), every 3rd Sunday	72-4755
Kumihama Final Disposal Site	Kumihamacho 98-1	Non-Burnable Trash, Large Non-Burnable Trash, Hazardous Waste	Mondays, Thursdays, Saturdays (excl. holidays), every 2nd and 5th Sunday	82-0846



Used small appliances
Used small appliances should be separated for recycling and placed in the small appliance collection boxes located at the final disposal sites, the Citizens Affairs Bureau, and local community centers.

(Box slot size: 60 cm x 25 cm x 60 cm)

Tempura Oil (Used Cooking Oil)
Used cooking oil should be placed in containers set up by the "Local Energy Project" (an initiative by the NPO Econet Tango and Onishi Eisei Co., Ltd.) or in the collection containers located at Kyotango-Omiya Station, Yuhigaura-Kitsuonsen Station, and Shotenkyo Station.

Newspapers, Magazines, Cardboard, Paper Cartons

Mixed Paper

Donate to Paper Recycling Groups such as Craft Circles, PTAs, and Neighborhood Associations.

Inquiries About Waste Disposal: Kyotango City Life Environment Section (☎0772-69-0240)

Collection Area
Kumihama
Ikku Shinmachi, Shinbashi, Sakaemachi Niku

2025 Kyotango City Household Garbage Collection Calendar

Please place your trash **on collection day** at the designated collection station
before 8 AM.
 (Trash placed at a later time will not be collected.)

Trash from businesses and restaurants cannot be placed at the stations.
 It must be either entrusted to a city-authorized general trash collection and transportation service provider or brought to the city processing facility by the business itself.

Burnable Trash ※in designated bags	Hazardous Waste (Fluorescent Lamps and Dry Batteries)	Container and Packaging Plastics	Empty Cans	PET Bottles	Non-burnable Trash ※in designated bags	Container and Packaging Plastics	Empty Cans	PET Bottles
		Styrofoam	Empty Bottles			Styrofoam	Empty Bottles	

White Acceptance days at the Mineyama Final Disposal Site

April						
Sun	Mon	Tue	Wed	Thu	Fri	Sat
		1	2	3	4	5
6	7	8	9	10	11	12
13	14	15	16	17	18	19
20	21	22	23	24	25	26
27	28	29	30			

May						
Sun	Mon	Tue	Wed	Thu	Fri	Sat
				1	2	3
4	5	6	7	8	9	10
11	12	13	14	15	16	17
18	19	20	21	22	23	24
25	26	27	28	29	30	31

June						
Sun	Mon	Tue	Wed	Thu	Fri	Sat
1	2	3	4	5	6	7
8	9	10	11	12	13	14
15	16	17	18	19	20	21
22	23	24	25	26	27	28
29	30					

July						
Sun	Mon	Tue	Wed	Thu	Fri	Sat
		1	2	3	4	5
6	7	8	9	10	11	12
13	14	15	16	17	18	19
20	21	22	23	24	25	26
27	28	29	30	31		

August						
Sun	Mon	Tue	Wed	Thu	Fri	Sat
					1	2
3	4	5	6	7	8	9
10	11	12	13	14	15	16
17	18	19	20	21	22	23
24	25	26	27	28	29	30
31						

September						
Sun	Mon	Tue	Wed	Thu	Fri	Sat
	1	2	3	4	5	6
7	8	9	10	11	12	13
14	15	16	17	18	19	20
21	22	23	24	25	26	27
28	29	30				

October						
Sun	Mon	Tue	Wed	Thu	Fri	Sat
			1	2	3	4
5	6	7	8	9	10	11
12	13	14	15	16	17	18
19	20	21	22	23	24	25
26	27	28	29	30	31	

November						
Sun	Mon	Tue	Wed	Thu	Fri	Sat
						1
2	3	4	5	6	7	8
9	10	11	12	13	14	15
16	17	18	19	20	21	22
23	24	25	26	27	28	29
30						

December						
Sun	Mon	Tue	Wed	Thu	Fri	Sat
	1	2	3	4	5	6
7	8	9	10	11	12	13
14	15	16	17	18	19	20
21	22	23	24	25	26	27
28	29	30	31			

January						
Sun	Mon	Tue	Wed	Thu	Fri	Sat
				1	2	3
4	5	6	7	8	9	10
11	12	13	14	15	16	17
18	19	20	21	22	23	24
25	26	27	28	29	30	31

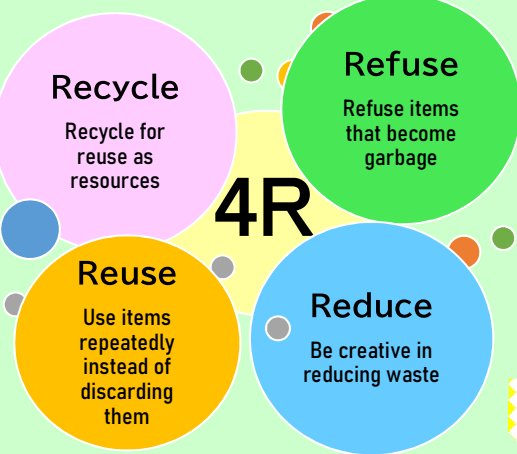
February						
Sun	Mon	Tue	Wed	Thu	Fri	Sat
1	2	3	4	5	6	7
8	9	10	11	12	13	14
15	16	17	18	19	20	21
22	23	24	25	26	27	28

March						
Sun	Mon	Tue	Wed	Thu	Fri	Sat
1	2	3	4	5	6	7
8	9	10	11	12	13	14
15	16	17	18	19	20	21
22	23	24	25	26	27	28
29	30	31				

Garbage Processing Facility

- Reception Hours: 9:00 AM to 4:30 PM (Closed from December 31 to January 3)
- Drop-off Fee: ¥220 for up to 20 kg, an additional ¥110 for every 10 kg over that. (No fee if brought in city-designated bags, applicable only to combustible and non-combustible waste)

Facility Name	Location	Garbage That Can Be Brought In	Reception Weekdays	Phone
Mineyama Clean Center	Mineyamacho Naiki 908	Burnable Trash, Large Burnable Trash, Recyclable Trash, Hazardous Waste	Monday to Saturday (incl. holidays)	62-4626
Mineyama Final Disposal Site	Mineyamacho Naiki 800	Non-Burnable Trash, Large Non-Burnable Trash	Tuesdays and Thursdays (excl. holidays), every 4th Sunday	62-3336
Omiya Final Disposal Site	Omiyacho Misaka 5-1	Non-Burnable Trash, Large Non-Burnable Trash, Hazardous Waste, Pruned Branches and Leaves	Mondays, Wednesdays, Fridays (excl. holidays), every 1st Sunday	64-4866
Amino Final Disposal Site	Aminocho Mitsu 378-1	Non-Burnable Trash, Large Non-Burnable Trash, Hazardous Waste	Tuesdays, Wednesdays, Fridays (excl. holidays), every 3rd Sunday	72-4755
Kumihama Final Disposal Site	Kumihamacho 98-1	Non-Burnable Trash, Large Non-Burnable Trash, Hazardous Waste	Mondays, Thursdays, Saturdays (excl. holidays), every 2nd and 5th Sunday	82-0846

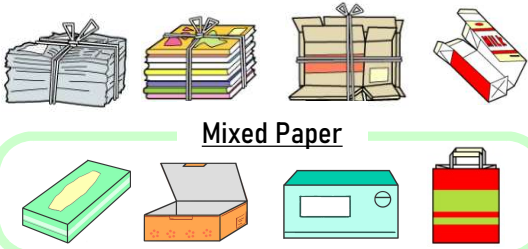


Used small appliances
 Used small appliances should be separated for recycling and placed in the small appliance collection boxes located at the final disposal sites, the Citizens Affairs Bureau, and local community centers.

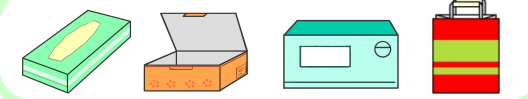
(Box slot size: 60 cm x 25 cm x 60 cm)

Tempura Oil (Used Cooking Oil)
 Used cooking oil should be placed in containers set up by the "Local Energy Project" (an initiative by the NPO Econet Tango and Onishi Eisei Co., Ltd.) or in the collection containers located at Kyotango-Omiya Station, Yuhigaura-Kitsuonsen Station, and Shotenkyo Station.

Newspapers, Magazines, Cardboard, Paper Cartons



Mixed Paper



Donate to Paper Recycling Groups such as Craft Circles, PTAs, and Neighborhood Associations.

Inquiries About Waste Disposal: Kyotango City Life Environment Section (250772-69-0240)

Collection Area
Kumihama
Kaibe

2025 Kyotango City Household Garbage Collection Calendar

Please place your trash **on collection day** at the designated collection station **before 8 AM.**
(Trash placed at a later time will not be collected.)

Trash from businesses and restaurants cannot be placed at the stations.
It must be either entrusted to a city-authorized general trash collection and transportation service provider or brought to the city processing facility by the business itself.

Burnable Trash ※in designated bags	Hazardous Waste (Fluorescent Lamps and Dry Batteries)	Container and Packaging Plastics	Empty Cans	PET Bottles	Non-burnable Trash ※in designated bags	Container and Packaging Plastics	Empty Cans	PET Bottles
		Styrofoam	Empty Bottles			Styrofoam	Empty Bottles	

White Acceptance days at the Mineyama Final Disposal Site

April						
Sun	Mon	Tue	Wed	Thu	Fri	Sat
		1	2	3	4	5
6	7	8	9	10	11	12
13	14	15	16	17	18	19
20	21	22	23	24	25	26
27	28	29	30			

May						
Sun	Mon	Tue	Wed	Thu	Fri	Sat
				1	2	3
4	5	6	7	8	9	10
11	12	13	14	15	16	17
18	19	20	21	22	23	24
25	26	27	28	29	30	31

June						
Sun	Mon	Tue	Wed	Thu	Fri	Sat
1	2	3	4	5	6	7
8	9	10	11	12	13	14
15	16	17	18	19	20	21
22	23	24	25	26	27	28
29	30					

July						
Sun	Mon	Tue	Wed	Thu	Fri	Sat
		1	2	3	4	5
6	7	8	9	10	11	12
13	14	15	16	17	18	19
20	21	22	23	24	25	26
27	28	29	30	31		

August						
Sun	Mon	Tue	Wed	Thu	Fri	Sat
					1	2
3	4	5	6	7	8	9
10	11	12	13	14	15	16
17	18	19	20	21	22	23
24	25	26	27	28	29	30
31						

September						
Sun	Mon	Tue	Wed	Thu	Fri	Sat
	1	2	3	4	5	6
7	8	9	10	11	12	13
14	15	16	17	18	19	20
21	22	23	24	25	26	27
28	29	30				

October						
Sun	Mon	Tue	Wed	Thu	Fri	Sat
			1	2	3	4
5	6	7	8	9	10	11
12	13	14	15	16	17	18
19	20	21	22	23	24	25
26	27	28	29	30	31	

November						
Sun	Mon	Tue	Wed	Thu	Fri	Sat
						1
2	3	4	5	6	7	8
9	10	11	12	13	14	15
16	17	18	19	20	21	22
23	24	25	26	27	28	29
30						

December						
Sun	Mon	Tue	Wed	Thu	Fri	Sat
	1	2	3	4	5	6
7	8	9	10	11	12	13
14	15	16	17	18	19	20
21	22	23	24	25	26	27
28	29	30	31			

January						
Sun	Mon	Tue	Wed	Thu	Fri	Sat
				1	2	3
4	5	6	7	8	9	10
11	12	13	14	15	16	17
18	19	20	21	22	23	24
25	26	27	28	29	30	31

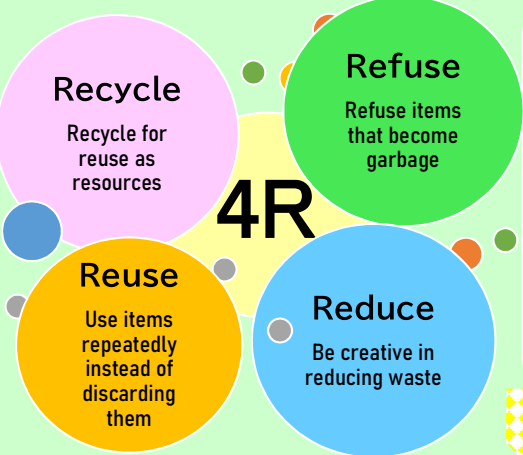
February						
Sun	Mon	Tue	Wed	Thu	Fri	Sat
1	2	3	4	5	6	7
8	9	10	11	12	13	14
15	16	17	18	19	20	21
22	23	24	25	26	27	28

March						
Sun	Mon	Tue	Wed	Thu	Fri	Sat
1	2	3	4	5	6	7
8	9	10	11	12	13	14
15	16	17	18	19	20	21
22	23	24	25	26	27	28
29	30	31				

Garbage Processing Facility

- Reception Hours: 9:00 AM to 4:30 PM (Closed from December 31 to January 3)
- Drop-off Fee: ¥220 for up to 20 kg, an additional ¥110 for every 10 kg over that. (No fee if brought in city-designated bags, applicable only to combustible and non-combustible waste)

Facility Name	Location	Garbage That Can Be Brought In	Reception Weekdays	Phone
Mineyama Clean Center	Mineyamacho Naiki 908	Burnable Trash, Large Burnable Trash, Recyclable Trash, Hazardous Waste	Monday to Saturday (incl. holidays)	62-4626
Mineyama Final Disposal Site	Mineyamacho Naiki 800	Non-Burnable Trash, Large Non-Burnable Trash	Tuesdays and Thursdays (excl. holidays), every 4th Sunday	62-3336
Omiya Final Disposal Site	Omiyacho Misaka 5-1	Non-Burnable Trash, Large Non-Burnable Trash, Hazardous Waste, Pruned Branches and Leaves	Mondays, Wednesdays, Fridays (excl. holidays), every 1st Sunday	64-4866
Amino Final Disposal Site	Aminocho Mitsu 378-1	Non-Burnable Trash, Large Non-Burnable Trash, Hazardous Waste	Tuesdays, Wednesdays, Fridays (excl. holidays), every 3rd Sunday	72-4755
Kumihama Final Disposal Site	Kumihamacho 98-1	Non-Burnable Trash, Large Non-Burnable Trash, Hazardous Waste	Mondays, Thursdays, Saturdays (excl. holidays), every 2nd and 5th Sunday	82-0846



Used small appliances
Used small appliances should be separated for recycling and placed in the small appliance collection boxes located at the final disposal sites, the Citizens Affairs Bureau, and local community centers.

(Box slot size: 60 cm x 25 cm x 60 cm)

Tempura Oil (Used Cooking Oil)
Used cooking oil should be placed in containers set up by the "Local Energy Project" (an initiative by the NPO Econet Tango and Onishi Eisei Co., Ltd.) or in the collection containers located at Kyotango-Omiya Station, Yuhigaura-Kitsuonsen Station, and Shotenkyo Station.

Newspapers, Magazines, Cardboard, Paper Cartons

Mixed Paper

Donate to Paper Recycling Groups such as Craft Circles, PTAs, and Neighborhood Associations.

Inquiries About Waste Disposal: Kyotango City Life Environment Section (23-0772-69-0240)

Collection Area
Kumihama
Sano Minami Jogahata, Okuyama, Futamata, Koguwa, Sanoko, Sanootsu, Sanohei Anyoji, Nonaka

2025 Kyotango City Household Garbage Collection Calendar

Please place your trash on collection day at the designated collection station
before 8 AM.
(Trash placed at a later time will not be collected.)

Trash from businesses and restaurants cannot be placed at the stations.
It must be either entrusted to a city-authorized general trash collection and transportation service provider or brought to the city processing facility by the business itself.

Burnable Trash ※in designated bags	Hazardous Waste (Fluorescent Lamps and Dry Batteries)	Container and Packaging Plastics	Empty Cans	PET Bottles	Non-burnable Trash ※in designated bags	Container and Packaging Plastics	Empty Cans	PET Bottles
		Styrofoam	Empty Bottles			Styrofoam	Empty Bottles	

White Acceptance days at the Mineyama Final Disposal Site

April						
Sun	Mon	Tue	Wed	Thu	Fri	Sat
		1	2	3	4	5
6	7	8	9	10	11	12
13	14	15	16	17	18	19
20	21	22	23	24	25	26
27	28	29	30			

May						
Sun	Mon	Tue	Wed	Thu	Fri	Sat
				1	2	3
4	5	6	7	8	9	10
11	12	13	14	15	16	17
18	19	20	21	22	23	24
25	26	27	28	29	30	31

June						
Sun	Mon	Tue	Wed	Thu	Fri	Sat
1	2	3	4	5	6	7
8	9	10	11	12	13	14
15	16	17	18	19	20	21
22	23	24	25	26	27	28
29	30					

July						
Sun	Mon	Tue	Wed	Thu	Fri	Sat
		1	2	3	4	5
6	7	8	9	10	11	12
13	14	15	16	17	18	19
20	21	22	23	24	25	26
27	28	29	30	31		

August						
Sun	Mon	Tue	Wed	Thu	Fri	Sat
					1	2
3	4	5	6	7	8	9
10	11	12	13	14	15	16
17	18	19	20	21	22	23
24	25	26	27	28	29	30
31						

September						
Sun	Mon	Tue	Wed	Thu	Fri	Sat
	1	2	3	4	5	6
7	8	9	10	11	12	13
14	15	16	17	18	19	20
21	22	23	24	25	26	27
28	29	30				

October						
Sun	Mon	Tue	Wed	Thu	Fri	Sat
			1	2	3	4
5	6	7	8	9	10	11
12	13	14	15	16	17	18
19	20	21	22	23	24	25
26	27	28	29	30	31	

November						
Sun	Mon	Tue	Wed	Thu	Fri	Sat
						1
2	3	4	5	6	7	8
9	10	11	12	13	14	15
16	17	18	19	20	21	22
23	24	25	26	27	28	29
30						

December						
Sun	Mon	Tue	Wed	Thu	Fri	Sat
	1	2	3	4	5	6
7	8	9	10	11	12	13
14	15	16	17	18	19	20
21	22	23	24	25	26	27
28	29	30	31			

January						
Sun	Mon	Tue	Wed	Thu	Fri	Sat
				1	2	3
4	5	6	7	8	9	10
11	12	13	14	15	16	17
18	19	20	21	22	23	24
25	26	27	28	29	30	31

February						
Sun	Mon	Tue	Wed	Thu	Fri	Sat
1	2	3	4	5	6	7
8	9	10	11	12	13	14
15	16	17	18	19	20	21
22	23	24	25	26	27	28

March						
Sun	Mon	Tue	Wed	Thu	Fri	Sat
1	2	3	4	5	6	7
8	9	10	11	12	13	14
15	16	17	18	19	20	21
22	23	24	25	26	27	28
29	30	31				

Garbage Processing Facility

- Reception Hours: 9:00 AM to 4:30 PM (Closed from December 31 to January 3)
- Drop-off Fee: ¥220 for up to 20 kg, an additional ¥110 for every 10 kg over that. (No fee if brought in city-designated bags, applicable only to combustible and non-combustible waste)

Facility Name	Location	Garbage That Can Be Brought In	Reception Weekdays	Phone
Mineyama Clean Center	Mineyamacho Naiki 908	Burnable Trash, Large Burnable Trash, Recyclable Trash, Hazardous Waste	Monday to Saturday (incl. holidays)	62-4626
Mineyama Final Disposal Site	Mineyamacho Naiki 800	Non-Burnable Trash, Large Non-Burnable Trash	Tuesdays and Thursdays (excl. holidays), every 4th Sunday	62-3336
Omiya Final Disposal Site	Omiyacho Misaka 5-1	Non-Burnable Trash, Large Non-Burnable Trash, Hazardous Waste, Pruned Branches and Leaves	Mondays, Wednesdays, Fridays (excl. holidays), every 1st Sunday	64-4866
Amino Final Disposal Site	Aminocho Mitsu 378-1	Non-Burnable Trash, Large Non-Burnable Trash, Hazardous Waste	Tuesdays, Wednesdays, Fridays (excl. holidays), every 3rd Sunday	72-4755
Kumihama Final Disposal Site	Kumihamacho 98-1	Non-Burnable Trash, Large Non-Burnable Trash, Hazardous Waste	Mondays, Thursdays, Saturdays (excl. holidays), every 2nd and 5th Sunday	82-0846

Recycle

Recycle for reuse as resources

Refuse

Refuse items that become garbage

Reuse

Use items repeatedly instead of discarding them

Reduce

Be creative in reducing waste

Used small appliances

Used small appliances should be separated for recycling and placed in the small appliance collection boxes located at the final disposal sites, the Citizens Affairs Bureau, and local community centers.

(Box slot size: 60 cm x 25 cm x 60 cm)

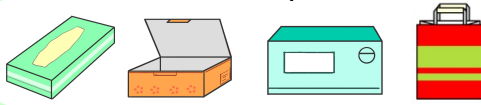
Tempura Oil (Used Cooking Oil)

Used cooking oil should be placed in containers set up by the "Local Energy Project" (an initiative by the NPO Econet Tango and Onishi Eisei Co., Ltd.) or in the collection containers located at Kyotango-Omiya Station, Yuhigaura-Kitsuonsen Station, and Shotenkyo Station.

Newspapers, Magazines, Cardboard, Paper Cartons



Mixed Paper



Donate to Paper Recycling Groups such as Craft Circles, PTAs, and Neighborhood Associations.

Inquiries About Waste Disposal: Kyotango City Life Environment Section (☎0772-69-0240)

Collection Area
Kumihama
Sano Kita Go, Endonji, Sakadani, Nagano, Takefuji, Nyoo, Maruyama, Nagadome

2025 Kyotango City Household Garbage Collection Calendar

Please place your trash on collection day at the designated collection station
before 8 AM.
 (Trash placed at a later time will not be collected.)

Trash from businesses and restaurants cannot be placed at the stations.
 It must be either entrusted to a city-authorized general trash collection and transportation service provider or brought to the city processing facility by the business itself.

Burnable Trash ※in designated bags	Hazardous Waste (Fluorescent Lamps and Dry Batteries)	Container and Packaging Plastics	Empty Cans	PET Bottles	Non-burnable Trash ※in designated bags	Container and Packaging Plastics	Empty Cans	PET Bottles
		Styrofoam	Empty Bottles			Styrofoam	Empty Bottles	

White Acceptance days at the Mineyama Final Disposal Site

April						
Sun	Mon	Tue	Wed	Thu	Fri	Sat
		1	2	3	4	5
6	7	8	9	10	11	12
13	14	15	16	17	18	19
20	21	22	23	24	25	26
27	28	29	30			

May						
Sun	Mon	Tue	Wed	Thu	Fri	Sat
				1	2	3
4	5	6	7	8	9	10
11	12	13	14	15	16	17
18	19	20	21	22	23	24
25	26	27	28	29	30	31

June						
Sun	Mon	Tue	Wed	Thu	Fri	Sat
1	2	3	4	5	6	7
8	9	10	11	12	13	14
15	16	17	18	19	20	21
22	23	24	25	26	27	28
29	30					

July						
Sun	Mon	Tue	Wed	Thu	Fri	Sat
		1	2	3	4	5
6	7	8	9	10	11	12
13	14	15	16	17	18	19
20	21	22	23	24	25	26
27	28	29	30	31		

August						
Sun	Mon	Tue	Wed	Thu	Fri	Sat
					1	2
3	4	5	6	7	8	9
10	11	12	13	14	15	16
17	18	19	20	21	22	23
24	25	26	27	28	29	30
31						

September						
Sun	Mon	Tue	Wed	Thu	Fri	Sat
	1	2	3	4	5	6
7	8	9	10	11	12	13
14	15	16	17	18	19	20
21	22	23	24	25	26	27
28	29	30				

October						
Sun	Mon	Tue	Wed	Thu	Fri	Sat
			1	2	3	4
5	6	7	8	9	10	11
12	13	14	15	16	17	18
19	20	21	22	23	24	25
26	27	28	29	30	31	

November						
Sun	Mon	Tue	Wed	Thu	Fri	Sat
						1
2	3	4	5	6	7	8
9	10	11	12	13	14	15
16	17	18	19	20	21	22
23	24	25	26	27	28	29
30						

December						
Sun	Mon	Tue	Wed	Thu	Fri	Sat
	1	2	3	4	5	6
7	8	9	10	11	12	13
14	15	16	17	18	19	20
21	22	23	24	25	26	27
28	29	30	31			

January						
Sun	Mon	Tue	Wed	Thu	Fri	Sat
				1	2	3
4	5	6	7	8	9	10
11	12	13	14	15	16	17
18	19	20	21	22	23	24
25	26	27	28	29	30	31

February						
Sun	Mon	Tue	Wed	Thu	Fri	Sat
1	2	3	4	5	6	7
8	9	10	11	12	13	14
15	16	17	18	19	20	21
22	23	24	25	26	27	28

March						
Sun	Mon	Tue	Wed	Thu	Fri	Sat
1	2	3	4	5	6	7
8	9	10	11	12	13	14
15	16	17	18	19	20	21
22	23	24	25	26	27	28
29	30	31				

Garbage Processing Facility

- Reception Hours: 9:00 AM to 4:30 PM (Closed from December 31 to January 3)
- Drop-off Fee: ¥220 for up to 20 kg, an additional ¥110 for every 10 kg over that. (No fee if brought in city-designated bags, applicable only to combustible and non-combustible waste)

Facility Name	Location	Garbage That Can Be Brought In	Reception Weekdays	Phone
Mineyama Clean Center	Mineyamacho Naiki 908	Burnable Trash, Large Burnable Trash, Recyclable Trash, Hazardous Waste	Monday to Saturday (incl. holidays)	62-4626
Mineyama Final Disposal Site	Mineyamacho Naiki 800	Non-Burnable Trash, Large Non-Burnable Trash	Tuesdays and Thursdays (excl. holidays), every 4th Sunday	62-3336
Omiya Final Disposal Site	Omiyacho Misaka 5-1	Non-Burnable Trash, Large Non-Burnable Trash, Hazardous Waste, Pruned Branches and Leaves	Mondays, Wednesdays, Fridays (excl. holidays), every 1st Sunday	64-4866
Amino Final Disposal Site	Aminochō Mitsu 378-1	Non-Burnable Trash, Large Non-Burnable Trash, Hazardous Waste	Tuesdays, Wednesdays, Fridays (excl. holidays), every 3rd Sunday	72-4755
Kumihama Final Disposal Site	Kumihamacho 98-1	Non-Burnable Trash, Large Non-Burnable Trash, Hazardous Waste	Mondays, Thursdays, Saturdays (excl. holidays), every 2nd and 5th Sunday	82-0846

Recycle

Recycle for reuse as resources

Refuse

Refuse items that become garbage

Reuse

Use items repeatedly instead of discarding them

Reduce

Be creative in reducing waste

Used small appliances

Used small appliances should be separated for recycling and placed in the small appliance collection boxes located at the final disposal sites, the Citizens Affairs Bureau, and local community centers.

(Box slot size: 60 cm x 25 cm x 60 cm)

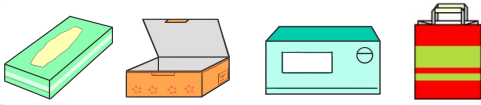
Tempura Oil (Used Cooking Oil)

Used cooking oil should be placed in containers set up by the "Local Energy Project" (an initiative by the NPO Econet Tango and Onishi Eisei Co., Ltd.) or in the collection containers located at Kyotango-Omiya Station, Yuhigaura-Kitsuonsen Station, and Shotenkyo Station.

Newspapers, Magazines, Cardboard, Paper Cartons



Mixed Paper



Donate to Paper Recycling Groups such as Craft Circles, PTAs, and Neighborhood Associations.

Inquiries About Waste Disposal: Kyotango City Life Environment Section (☎0772-69-0240)

Collection Area
Kumihama
Kanno Tamura

2025 Kyotango City Household Garbage Collection Calendar

Please place your trash on collection day at the designated collection station
before 8 AM.
(Trash placed at a later time will not be collected.)

Trash from businesses and restaurants cannot be placed at the stations.
It must be either entrusted to a city-authorized general trash collection and transportation service provider or brought to the city processing facility by the business itself.

Burnable Trash ※in designated bags	Hazardous Waste (Fluorescent Lamps and Dry Batteries)	Container and Packaging Plastics	Empty Cans	PET Bottles	Non-burnable Trash ※in designated bags	Container and Packaging Plastics	Empty Cans	PET Bottles
		Styrofoam	Empty Bottles			Styrofoam	Empty Bottles	

White Acceptance days at the Mineyama Final Disposal Site

April						
Sun	Mon	Tue	Wed	Thu	Fri	Sat
		1	2	3	4	5
6	7	8	9	10	11	12
13	14	15	16	17	18	19
20	21	22	23	24	25	26
27	28	29	30			

May						
Sun	Mon	Tue	Wed	Thu	Fri	Sat
				1	2	3
4	5	6	7	8	9	10
11	12	13	14	15	16	17
18	19	20	21	22	23	24
25	26	27	28	29	30	31

June						
Sun	Mon	Tue	Wed	Thu	Fri	Sat
1	2	3	4	5	6	7
8	9	10	11	12	13	14
15	16	17	18	19	20	21
22	23	24	25	26	27	28
29	30					

July						
Sun	Mon	Tue	Wed	Thu	Fri	Sat
		1	2	3	4	5
6	7	8	9	10	11	12
13	14	15	16	17	18	19
20	21	22	23	24	25	26
27	28	29	30	31		

August						
Sun	Mon	Tue	Wed	Thu	Fri	Sat
					1	2
3	4	5	6	7	8	9
10	11	12	13	14	15	16
17	18	19	20	21	22	23
24	25	26	27	28	29	30
31						

September						
Sun	Mon	Tue	Wed	Thu	Fri	Sat
	1	2	3	4	5	6
7	8	9	10	11	12	13
14	15	16	17	18	19	20
21	22	23	24	25	26	27
28	29	30				

October						
Sun	Mon	Tue	Wed	Thu	Fri	Sat
			1	2	3	4
5	6	7	8	9	10	11
12	13	14	15	16	17	18
19	20	21	22	23	24	25
26	27	28	29	30	31	

November						
Sun	Mon	Tue	Wed	Thu	Fri	Sat
						1
2	3	4	5	6	7	8
9	10	11	12	13	14	15
16	17	18	19	20	21	22
23	24	25	26	27	28	29
30						

December						
Sun	Mon	Tue	Wed	Thu	Fri	Sat
	1	2	3	4	5	6
7	8	9	10	11	12	13
14	15	16	17	18	19	20
21	22	23	24	25	26	27
28	29	30	31			

January						
Sun	Mon	Tue	Wed	Thu	Fri	Sat
				1	2	3
4	5	6	7	8	9	10
11	12	13	14	15	16	17
18	19	20	21	22	23	24
25	26	27	28	29	30	31

February						
Sun	Mon	Tue	Wed	Thu	Fri	Sat
1	2	3	4	5	6	7
8	9	10	11	12	13	14
15	16	17	18	19	20	21
22	23	24	25	26	27	28

March						
Sun	Mon	Tue	Wed	Thu	Fri	Sat
1	2	3	4	5	6	7
8	9	10	11	12	13	14
15	16	17	18	19	20	21
22	23	24	25	26	27	28
29	30	31				

Garbage Processing Facility

- Reception Hours: 9:00 AM to 4:30 PM (Closed from December 31 to January 3)
- Drop-off Fee: ¥220 for up to 20 kg, an additional ¥110 for every 10 kg over that. (No fee if brought in city-designated bags, applicable only to combustible and non-combustible waste)

Facility Name	Location	Garbage That Can Be Brought In	Reception Weekdays	Phone
Mineyama Clean Center	Mineyamacho Naiki 908	Burnable Trash, Large Burnable Trash, Recyclable Trash, Hazardous Waste	Monday to Saturday (incl. holidays)	62-4626
Mineyama Final Disposal Site	Mineyamacho Naiki 800	Non-Burnable Trash, Large Non-Burnable Trash	Tuesdays and Thursdays (excl. holidays), every 4th Sunday	62-3336
Omiya Final Disposal Site	Omiyacho Misaka 5-1	Non-Burnable Trash, Large Non-Burnable Trash, Hazardous Waste, Pruned Branches and Leaves	Mondays, Wednesdays, Fridays (excl. holidays), every 1st Sunday	64-4866
Amino Final Disposal Site	Aminocho Mitsu 378-1	Non-Burnable Trash, Large Non-Burnable Trash, Hazardous Waste	Tuesdays, Wednesdays, Fridays (excl. holidays), every 3rd Sunday	72-4755
Kumihama Final Disposal Site	Kumihamacho 98-1	Non-Burnable Trash, Large Non-Burnable Trash, Hazardous Waste	Mondays, Thursdays, Saturdays (excl. holidays), every 2nd and 5th Sunday	82-0846

Recycle

Recycle for reuse as resources

Refuse

Refuse items that become garbage

Reuse

Use items repeatedly instead of discarding them

Reduce

Be creative in reducing waste

Used small appliances
Used small appliances should be separated for recycling and placed in the small appliance collection boxes located at the final disposal sites, the Citizens Affairs Bureau, and local community centers.

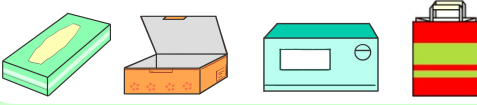
(Box slot size: 60 cm x 25 cm x 60 cm)

Tempura Oil (Used Cooking Oil)
Used cooking oil should be placed in containers set up by the "Local Energy Project" (an initiative by the NPO Econet Tango and Onishi Eisei Co., Ltd.) or in the collection containers located at Kyotango-Omiya Station, Yuhigaura-Kitsuonsen Station, and Shotenkyo Station.

Newspapers, Magazines, Cardboard, Paper Cartons



Mixed Paper



Donate to Paper Recycling Groups such as Craft Circles, PTAs, and Neighborhood Associations.

Inquiries About Waste Disposal: Kyotango City Life Environment Section (☎0772-69-0240)

Collection Area
Kumihama
Kawakami

2025 Kyotango City Household Garbage Collection Calendar

Please place your trash on collection day at the designated collection station
before 8 AM.
(Trash placed at a later time will not be collected.)

Trash from businesses and restaurants cannot be placed at the stations.
It must be either entrusted to a city-authorized general trash collection and transportation service provider or brought to the city processing facility by the business itself.

Burnable Trash ※in designated bags	Hazardous Waste (Fluorescent Lamps and Dry Batteries)	Container and Packaging Plastics	Empty Cans	PET Bottles	Non-burnable Trash ※in designated bags	Container and Packaging Plastics	Empty Cans	PET Bottles
		Styrofoam	Empty Bottles			Styrofoam	Empty Bottles	

White Acceptance days at the Mineyama Final Disposal Site

April						
Sun	Mon	Tue	Wed	Thu	Fri	Sat
		1	2	3	4	5
6	7	8	9	10	11	12
13	14	15	16	17	18	19
20	21	22	23	24	25	26
27	28	29	30			

May						
Sun	Mon	Tue	Wed	Thu	Fri	Sat
				1	2	3
4	5	6	7	8	9	10
11	12	13	14	15	16	17
18	19	20	21	22	23	24
25	26	27	28	29	30	31

June						
Sun	Mon	Tue	Wed	Thu	Fri	Sat
1	2	3	4	5	6	7
8	9	10	11	12	13	14
15	16	17	18	19	20	21
22	23	24	25	26	27	28
29	30					

July						
Sun	Mon	Tue	Wed	Thu	Fri	Sat
		1	2	3	4	5
6	7	8	9	10	11	12
13	14	15	16	17	18	19
20	21	22	23	24	25	26
27	28	29	30	31		

August						
Sun	Mon	Tue	Wed	Thu	Fri	Sat
					1	2
3	4	5	6	7	8	9
10	11	12	13	14	15	16
17	18	19	20	21	22	23
24	25	26	27	28	29	30
31						

September						
Sun	Mon	Tue	Wed	Thu	Fri	Sat
	1	2	3	4	5	6
7	8	9	10	11	12	13
14	15	16	17	18	19	20
21	22	23	24	25	26	27
28	29	30				

October						
Sun	Mon	Tue	Wed	Thu	Fri	Sat
			1	2	3	4
5	6	7	8	9	10	11
12	13	14	15	16	17	18
19	20	21	22	23	24	25
26	27	28	29	30	31	

November						
Sun	Mon	Tue	Wed	Thu	Fri	Sat
						1
2	3	4	5	6	7	8
9	10	11	12	13	14	15
16	17	18	19	20	21	22
23	24	25	26	27	28	29
30						

December						
Sun	Mon	Tue	Wed	Thu	Fri	Sat
	1	2	3	4	5	6
7	8	9	10	11	12	13
14	15	16	17	18	19	20
21	22	23	24	25	26	27
28	29	30	31			

January						
Sun	Mon	Tue	Wed	Thu	Fri	Sat
				1	2	3
4	5	6	7	8	9	10
11	12	13	14	15	16	17
18	19	20	21	22	23	24
25	26	27	28	29	30	31

February						
Sun	Mon	Tue	Wed	Thu	Fri	Sat
1	2	3	4	5	6	7
8	9	10	11	12	13	14
15	16	17	18	19	20	21
22	23	24	25	26	27	28

March						
Sun	Mon	Tue	Wed	Thu	Fri	Sat
1	2	3	4	5	6	7
8	9	10	11	12	13	14
15	16	17	18	19	20	21
22	23	24	25	26	27	28
29	30	31				

Garbage Processing Facility

- Reception Hours: 9:00 AM to 4:30 PM (Closed from December 31 to January 3)
- Drop-off Fee: ¥220 for up to 20 kg, an additional ¥110 for every 10 kg over that. (No fee if brought in city-designated bags, applicable only to combustible and non-combustible waste)

Facility Name	Location	Garbage That Can Be Brought In	Reception Weekdays	Phone
Mineyama Clean Center	Mineyamacho Naiki 908	Burnable Trash, Large Burnable Trash, Recyclable Trash, Hazardous Waste	Monday to Saturday (incl. holidays)	62-4626
Mineyama Final Disposal Site	Mineyamacho Naiki 800	Non-Burnable Trash, Large Non-Burnable Trash	Tuesdays and Thursdays (excl. holidays), every 4th Sunday	62-3336
Omiya Final Disposal Site	Omiyacho Misaka 5-1	Non-Burnable Trash, Large Non-Burnable Trash, Hazardous Waste, Pruned Branches and Leaves	Mondays, Wednesdays, Fridays (excl. holidays), every 1st Sunday	64-4866
Amino Final Disposal Site	Aminocho Mitsu 378-1	Non-Burnable Trash, Large Non-Burnable Trash, Hazardous Waste	Tuesdays, Wednesdays, Fridays (excl. holidays), every 3rd Sunday	72-4755
Kumihama Final Disposal Site	Kumihamacho 98-1	Non-Burnable Trash, Large Non-Burnable Trash, Hazardous Waste	Mondays, Thursdays, Saturdays (excl. holidays), every 2nd and 5th Sunday	82-0846



Used small appliances
Used small appliances should be separated for recycling and placed in the small appliance collection boxes located at the final disposal sites, the Citizens Affairs Bureau, and local community centers.

(Box slot size: 60 cm x 25 cm x 60 cm)

Tempura Oil (Used Cooking Oil)
Used cooking oil should be placed in containers set up by the "Local Energy Project" (an initiative by the NPO Econet Tango and Onishi Eisei Co., Ltd.) or in the collection containers located at Kyotango-Omiya Station, Yuhigaura-Kitsuonsen Station, and Shotenkyo Station.

Newspapers, Magazines, Cardboard, Paper Cartons

Mixed Paper

Donate to Paper Recycling Groups such as Craft Circles, PTAs, and Neighborhood Associations.

Inquiries About Waste Disposal: Kyotango City Life Environment Section (280772-69-0240)

Collection Area
Kumihama
Minato

2025 Kyotango City Household Garbage Collection Calendar

Please place your trash on collection day at the designated collection station
before 8 AM.
 (Trash placed at a later time will not be collected.)

Trash from businesses and restaurants cannot be placed at the stations.
 It must be either entrusted to a city-authorized general trash collection and transportation service provider or brought to the city processing facility by the business itself.

Burnable Trash ※in designated bags	Hazardous Waste (Fluorescent Lamps and Dry Batteries)	Container and Packaging Plastics	Empty Cans	PET Bottles	Non-burnable Trash ※in designated bags	Container and Packaging Plastics	Empty Cans	PET Bottles
		Styrofoam	Empty Bottles			Styrofoam	Empty Bottles	

White Acceptance days at the Mineyama Final Disposal Site

April						
Sun	Mon	Tue	Wed	Thu	Fri	Sat
		1	2	3	4	5
6	7	8	9	10	11	12
13	14	15	16	17	18	19
20	21	22	23	24	25	26
27	28	29	30			

May						
Sun	Mon	Tue	Wed	Thu	Fri	Sat
				1	2	3
4	5	6	7	8	9	10
11	12	13	14	15	16	17
18	19	20	21	22	23	24
25	26	27	28	29	30	31

June						
Sun	Mon	Tue	Wed	Thu	Fri	Sat
1	2	3	4	5	6	7
8	9	10	11	12	13	14
15	16	17	18	19	20	21
22	23	24	25	26	27	28
29	30			26		

July						
Sun	Mon	Tue	Wed	Thu	Fri	Sat
		1	2	3	4	5
6	7	8	9	10	11	12
13	14	15	16	17	18	19
20	21	22	23	24	25	26
27	28	29	30	31		

August						
Sun	Mon	Tue	Wed	Thu	Fri	Sat
					1	2
3	4	5	6	7	8	9
10	11	12	13	14	15	16
17	18	19	20	21	22	23
24	25	26	27	28	29	30
31						

September						
Sun	Mon	Tue	Wed	Thu	Fri	Sat
	1	2	3	4	5	6
7	8	9	10	11	12	13
14	15	16	17	18	19	20
21	22	23	24	25	26	27
28	29	30				

October						
Sun	Mon	Tue	Wed	Thu	Fri	Sat
			1	2	3	4
5	6	7	8	9	10	11
12	13	14	15	16	17	18
19	20	21	22	23	24	25
26	27	28	29	30	31	

November						
Sun	Mon	Tue	Wed	Thu	Fri	Sat
						1
2	3	4	5	6	7	8
9	10	11	12	13	14	15
16	17	18	19	20	21	22
23	24	25	26	27	28	29
30						

December						
Sun	Mon	Tue	Wed	Thu	Fri	Sat
	1	2	3	4	5	6
7	8	9	10	11	12	13
14	15	16	17	18	19	20
21	22	23	24	25	26	27
28	29	30	31			

January						
Sun	Mon	Tue	Wed	Thu	Fri	Sat
				1	2	3
4	5	6	7	8	9	10
11	12	13	14	15	16	17
18	19	20	21	22	23	24
25	26	27	28	29	30	31

February						
Sun	Mon	Tue	Wed	Thu	Fri	Sat
1	2	3	4	5	6	7
8	9	10	11	12	13	14
15	16	17	18	19	20	21
22	23	24	25	26	27	28

March						
Sun	Mon	Tue	Wed	Thu	Fri	Sat
1	2	3	4	5	6	7
8	9	10	11	12	13	14
15	16	17	18	19	20	21
22	23	24	25	26	27	28
29	30	31				

Garbage Processing Facility

- Reception Hours: 9:00 AM to 4:30 PM (Closed from December 31 to January 3)
- Drop-off Fee: ¥220 for up to 20 kg, an additional ¥110 for every 10 kg over that. (No fee if brought in city-designated bags, applicable only to combustible and non-combustible waste)

Facility Name	Location	Garbage That Can Be Brought In	Reception Weekdays	Phone
Mineyama Clean Center	Mineyamacho Naiki 908	Burnable Trash, Large Burnable Trash, Recyclable Trash, Hazardous Waste	Monday to Saturday (incl. holidays)	62-4626
Mineyama Final Disposal Site	Mineyamacho Naiki 800	Non-Burnable Trash, Large Non-Burnable Trash	Tuesdays and Thursdays (excl. holidays), every 4th Sunday	62-3336
Omiya Final Disposal Site	Omiyacho Misaka 5-1	Non-Burnable Trash, Large Non-Burnable Trash, Hazardous Waste, Pruned Branches and Leaves	Mondays, Wednesdays, Fridays (excl. holidays), every 1st Sunday	64-4866
Amino Final Disposal Site	Aminocho Mitsu 378-1	Non-Burnable Trash, Large Non-Burnable Trash, Hazardous Waste	Tuesdays, Wednesdays, Fridays (excl. holidays), every 3rd Sunday	72-4755
Kumihama Final Disposal Site	Kumihamacho 98-1	Non-Burnable Trash, Large Non-Burnable Trash, Hazardous Waste	Mondays, Thursdays, Saturdays (excl. holidays), every 2nd and 5th Sunday	82-0846



Used small appliances
 Used small appliances should be separated for recycling and placed in the small appliance collection boxes located at the final disposal sites, the Citizens Affairs Bureau, and local community centers.
 (Box slot size: 60 cm x 25 cm x 60 cm)

Tempura Oil (Used Cooking Oil)
 Used cooking oil should be placed in containers set up by the "Local Energy Project" (an initiative by the NPO Econet Tango and Onishi Eisei Co., Ltd.) or in the collection containers located at Kyotango-Omiya Station, Yuhigaura-Kitsuonsen Station, and Shotenkyo Station.

Newspapers, Magazines, Cardboard, Paper Cartons

Mixed Paper

Donate to Paper Recycling Groups such as Craft Circles, PTAs, and Neighborhood Associations.

Inquiries About Waste Disposal: Kyotango City Life Environment Section (☎0772-69-0240)