

Local Events – April 2023

Cherry Blossom Illuminations

Dates: Mid-March to the end of April

Locations: Lake Hanareko Park (Amino)
Minekuen Park (Mineyama)

Cherry blossoms are lovely in the day, but they have a magical ambiance when you see them lit up at night.

The Lake Hanareko lights will be on from March 20th to the end of April. The Minekuen Park lights will be on from March 25th and will last about 10 -14 days depending on weather and the cherry blossoms.



Easter Egg Hunt!

Date: 4/9 (Sunday)

Location: Grass Lawn in front of the Tango Cultural Center & Mineyama Community Center

Hosted by: U.S. Army Kyogamisaki Communication Site & Kyotango City International Association (KIA)

Admission: Free

RSVP: Please contact the kokusai_koryu@kyotango.net (KIA) by 4/5 (Wed.) to sign up.



Bring your kids and celebrate Easter with a fun egg hunt, a picture book read-a-loud, and more! This free family event is for kids ages 2-12 years old and will be

held, rain or shine. Please bring your own egg basket.

Spring Festival @ Kotohira Shrine

Dates: 4/9~4/10

Location: Kotohira Shrine (Mineyama)

Spring is now upon us, and there is no better way in Japan to celebrate the season than with a festival. There will be stalls on the shrine grounds on the evening of the 9th, so come and join in on the fun! Be sure to take a picture with the shrine's signature adorable feline protector, the *komaneko*!



Children's Seasonal Exhibition

Dates: 3/4~5/15

Location: Kyotango City History Museum
Exhibition Space
(55 Gou, Amino-cho)

Contact: TEL 0772-72-4600

The Kyotango City History Center is putting on an exhibition of items said to make children grow up healthy and ward off evil between Girl's Day and Boy's Day.



京丹後市立郷土資料館 (住所: 網野町 5 5 番地 電話: 0772-72-4600)

○開館日

令和5年3月末日まで

火・木・土曜日

令和5年4月1日から

月・木・土曜日

○開館時間

9:30-16:00

○入館料

令和5年3月末日まで

大人200円(120円)/小中学生100円(60円)

令和5年4月1日から

大人190円(120円)/小中学生90円(50円)

※()内は、15名以上の団体料金

Hours from 4/1: Monday, Thursday, Saturday

9:30AM~4:00PM

Admission from 4/1: Adult ¥190, Child (Junior High School age and under) ¥90

(discounts available for groups of 15 or more)

Exhibition - Memories from the Tango Earthquake

Dates: 3/4~4/23

Location: Kyotango Municipal Ancient Record Archive
(Exhibition Room), Mineyama Regional Community
Center (2F Exhibition Room)

Hours: 9:30AM~4:00PM (Closed on Tuesdays)

Admission from 4/1: Adults - ¥290

Child ¥150 (junior high school age & under)

Contact: Kyotango City Board of Education, Cultural
Heritage Preservation Section 0772-69-0640



Picture Book Shakespeare

Location: Anno Mitsumasa Art Museum
at Mori no Wakuden

Duration: March 8th (Wed.) ~ June 5th
(Mon.)

Open Hours: 9 : 30AM ~ 5PM (Last
Entry: 4:30PM)

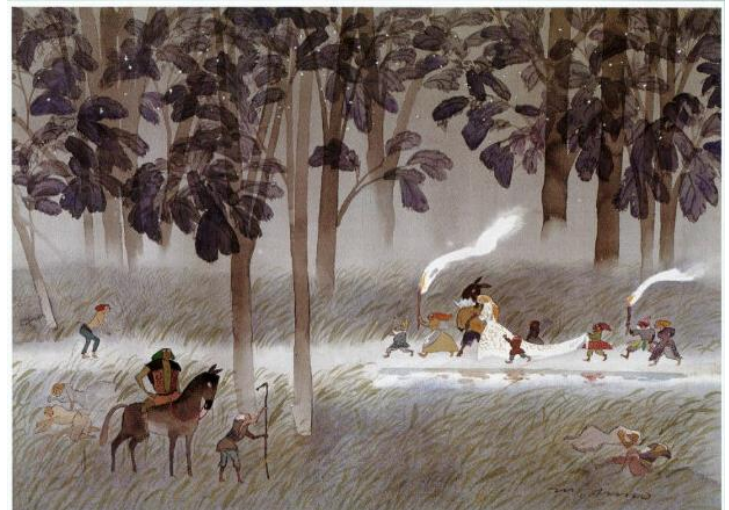
Closed on Tuesdays (If the
holiday is on a Tuesday, the
museum will be closed on
Wednesday)

Admission: General ¥1000

Junior High/High School Students ¥600

Elementary School Students ¥400

"All the world's a stage, and all the men and women merely players."



Scene from "Midsummer's Night Dream"

Picture book illustrator Anno Mitsumasa is a beloved name in every Japanese home and is known for his nostalgic and gentle watercolor illustrations. Marvel at his renditions of Shakespeare's most famous plays at the art museum nestled in the hills of Kumihama.

Hanago Okada

Business Hours: Mid-April ~ Mid-June,
9:30AM~4:30PM

Admission: Adults ¥700

Child (Elementary school age) –
¥350

Ages 3 & under – Free



Hanago Okada is a large flower garden in Amino with an area of 75,000 square meters. The garden is filled with elegant arrangements of flowers in every color of the rainbow. Throughout its open season the focal flowers change. Tulips, moss phlox (*shibazakura*), trellised wisterias (*fujidana*), rapeseed blossoms (*nanohana*), and double cherry blossoms (*yaezakura*) are some of the most popular, but there are many more flowers to see as well. A visit to this stunning "country of flowers" will be sure to refresh and revitalize any guest.

For more information in English about local events in Kyotango, please view www.visitkyotango.com.