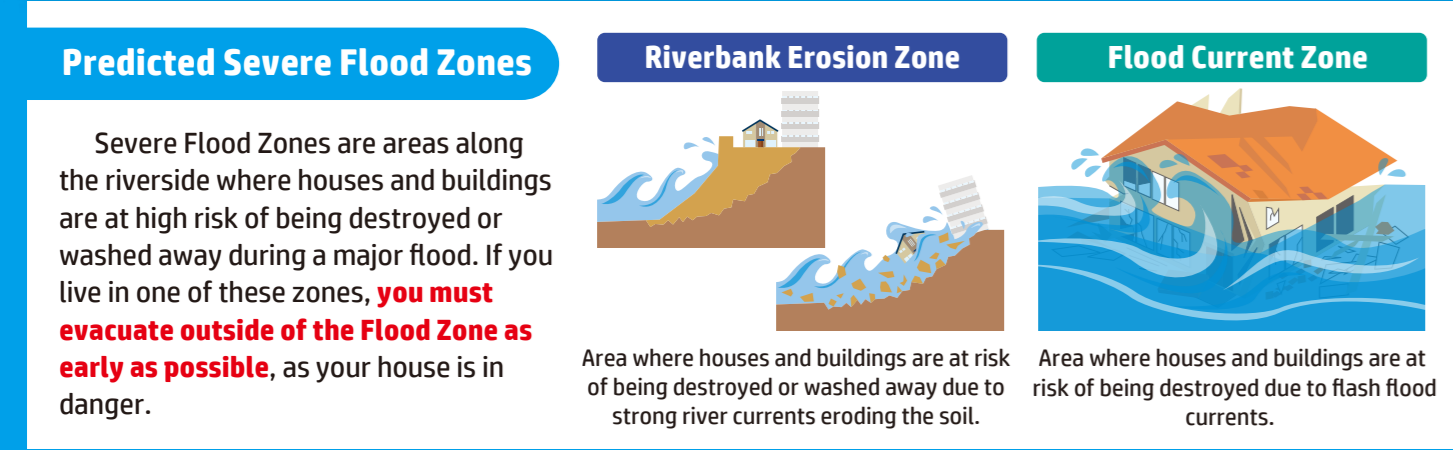
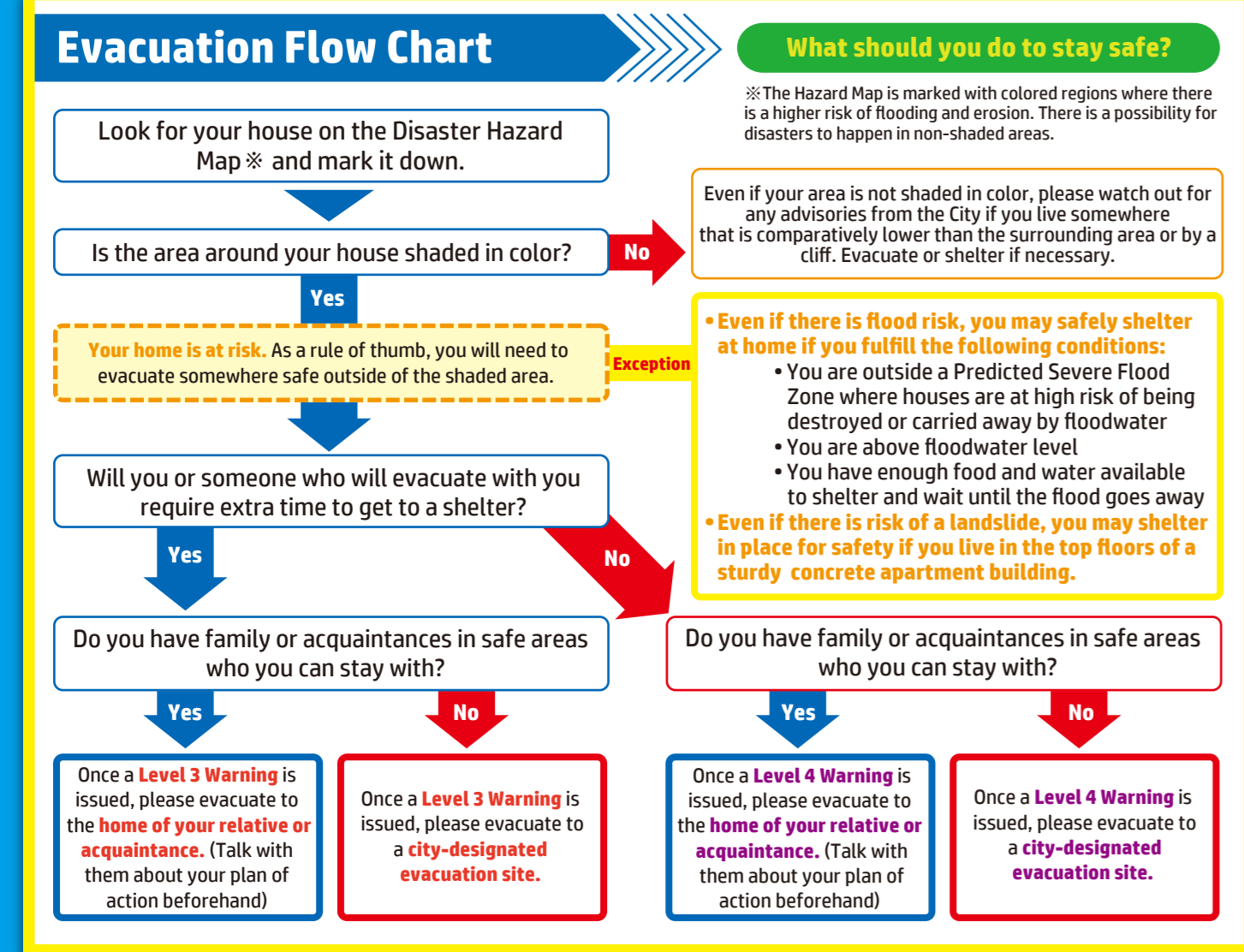


Kyotango City Flood and Landslide Disaster Hazard Map

Using this Flood and Landslide Disaster Hazard Map, please follow the Evacuation Flowchart below to assess the level of risk around your home and check whether or not it is necessary to shelter or evacuate. Next, please look over the "My Timeline" section on the page to the right. Think about what you need to do at each warning level, and fill out your timeline.

Also, on the page below, please look at the checklist for your emergency kit. Be sure to check different sources for information so you can be prepared and act calmly when the time comes.



Issued by **The General Affairs Section at Kyotango City Hall** 889 Sugitani, Mineyama-cho, Kyotango-shi, Kyoto 627-8567 TEL: 0772-69-0140

My Timeline

What is the potential risk around your home?

Floodwater Level

Up to m

(If water levels reach up to 0.5-3.0m, you cannot use the ground floor)

Do you live in a Landslide (Special) Warning Zone?

Yes / No (circle one)

Where do you evacuate to?

City-Designated Site

Other Locations

Who will you evacuate with?

People to Check On

For elderly neighbors or relatives who live separately

Supporter Contact Info

For those who need help evacuating

Key Points When Evacuating

- **Evacuate while there is still light outside**
- Evacuating in the dark is dangerous!
- **Evacuate before rain starts to pour**
- Check what time the rain and wind will get heavier on the TV or the Japan Meteorological Agency's website
- **Stay and shelter at home if safe**
- Check the Hazard Map for dangerous areas (high disaster risk)

Check the Evacuation Flowchart on the page to the left and decide whether or not it is necessary to evacuate. Check on your family members who live in hard-to-reach areas.

Warning Level and Conditions	Warning Level 1 Risk of worsening weather	Warning Level 2 Worsening weather conditions	Warning Level 3 Apparent disaster risk	Warning Level 4 High disaster risk	Warning Level 5 Disaster is happening/about to happen
Evacuation Order (City-issued)			Evacuation Advisory		Evacuation Order
Disaster and Weather Information	Early-stage warning ^{※1}	Heavy Rain/Flood/High Wave Advisory	Flood Warning/ Heavy Rain Warning (Landslide)	Landslide Warning etc.	Secure Emergency Shelter ^{※3}
Actions that Everyone Should Take	Prepare for approaching disaster	Go over your Evacuation Plan	Elderly and other vulnerable groups should evacuate from dangerous areas ^{※2}	Everyone must evacuate from dangerous areas	Special Heavy Rain Warning (Flood) Special Heavy Rain Warning (Landslide) Life-threatening! Get to safety now!
Please write down your Action Plan here.	Write down your and your family's actions based off of the Recommended Actions below.				
Recommended Actions	<ul style="list-style-type: none"> • Prepare for incoming disaster • Pay attention to the weather report on the TV or radio • Go over My Timeline • Check the schedules of everyone in your family • Check your emergency supplies and evacuation kit • Check evacuation route and action plan using the Hazard Map • Go over methods to confirm everyone's safety • Pay attention to information about rivers and streams • Contact family who live in areas with high disaster risk • Make sure your phone is charged • People who need time to evacuate i.e. the elderly, people with disabilities, infants, etc. and their supporters should begin evacuating • People who live in Landslide Alert Zones or areas where earlier evacuation is necessary during a flood should begin evacuating • Non-vulnerable people should stop their usual activities and begin evacuating when necessary • Everyone who lives in a dangerous area should get to safety as quickly as possible. • If you feel you are in danger in the midst of evacuating, at least get to somewhere safer (such as your home or the top floor of a sturdy concrete building) • Secure safety immediately at home or a nearby building (such as moving to somewhere higher up or moving to a room away from a cliff) 				

Evacuate to safety by the time a Level 4 Warning is issued!

※1 The Japan Meteorological Agency (JMA) will report on phenomena that are predicted to be alert up to five days in advance. ※2 Other people should evacuate on their own based on their needs. ※3 Since the City may not be able to accurately assess the situation, a Level 5 Warning may not always be issued. Depending on the information, warning levels may be skipped. Please be ready for information to change with little to no notice. In most cases, disaster and weather information will be released earlier than evacuation information from the City. So, if there is disaster and weather information released that requires you to evacuate from dangerous areas, please take the initiative to evacuate independently.

Be Prepared for a Natural Disaster

In the event a major disaster happens, all of your utilities may be cut off temporarily. Even if you do not need to evacuate, please prepare back-up necessities.

- ### Emergency Supply Kit
- Water
 - Food (Instant rice, boil-in-bag meals, biscuits, chocolate, hardtack (Kampan). Have at least three days' worth)
 - Protective Helmet/Hood
 - Clothes/Underwear
 - Rain Gear
 - Slip-on Shoes (no laces)
 - Flashlight (rechargeable type is preferred)
 - Portable Radio
 - Backup Batteries/Battery Pack
 - Matches/Candles
 - First Aid Kit (bandages, disinfectant, medicine, etc.)
 - Disposable Hand-warmers
 - Blankets
 - Other daily necessities (Tissue packs, toilet paper, plastic wrap, trash bags, plastic jugs/canisters, emergency toilet, etc.)
 - Work Gloves
 - Toiletries
 - Toothbrush/Toothpaste
 - Towels
 - Pen/Notebook
- Prevent the spread of disease!**
- Face Masks
 - Hand Sanitizer
 - Hand Soap
 - Wet Tissues
 - Thermometer
- Bring these with you!**
- Valuables (Stamps, cash, copy of important documents such as balance books, passport, residence card, driver's license, health insurance card, medical documents, MyNumber Card, etc.)
 - Baby Harness
 - Shoes for Child

- ### For Young Children
- Milk Formula (cubes, etc.)
 - Disposable Baby Bottles
 - Wearing Food
 - Cutlery
 - Diapers
 - Baby Wipes
 - Portable Bidet
 - Wearable Flashlight (necklace)

- ### For Women
- Pads/Tampons
 - Pantliners
 - Period Underwear
 - Opaque Trash Bags
 - Anti-Crime Buzzer/Whistle

- ### For the Elderly
- Adult Diapers
 - Cane
 - Hearing Aids
 - Dentures
 - Denture Cleaning Solution
 - Absorbent Pads for Men
 - Body Wipes
 - Medication for Chronic Conditions
 - Copy of Drug History (Handbook)

We Recommend Rolling Stock!

Rolling Stock is when you buy a little more food than you usually would and leave it as emergency stock, consume the oldest food before its expiration date, and replace the stock with new food so that you will always have a fresh reserve to eat.

How Much? ... At least three days' worth of food & water! (Save for a week if you can!) x (members of your family)

Be Careful During Heavy Rains & Floods

Rainfall Intensity Affects Disaster Threat

Source: Japan Meteorological Agency

Rainfall & Forecast Terminology	Moderately Heavy Rain	Heavy Rain	Very Heavy Rain	Intense Rain	Extreme Rain
	10-19mm	20-29mm	30-49mm	50-79mm	Over 80mm
Perceived Intensity	• Consistent shower	• Pouring rain	• As if buckets of water were raining down	• Constant and strong, like a waterfall	• Oppressively intense, almost suffocating
Effect on People and Outside Conditions	• Shoes get wet from splash-back	• Clothes get wet even with an umbrella	• The streets turn into rivers	• Umbrellas are no longer useful	• Field of vision is compromised by the spray
Disaster Threat	• If rain at this intensity persists, caution is needed.	• Gutters, waterways, and small streams may fill up and overflow	• Small-scale cliff erosion may occur	• Landslides along mountains and cliffs are more likely to occur	• Prepare to evacuate away from dangerous areas

※ Even if the amount of rainfall is the same shown in the table, the overall amount of rainfall from the beginning or the local geology and geography may affect the disasters that occur. This table is based on observations of what normally happens at each level of rainfall, so there is a possibility that the situation may be more—or less—disastrous than described above.

Water Levels for Rivers & Streams

Whenever river water levels are at risk of rising and overflowing, evacuation information regarding each water system will be released. The information will be released according to each river and stream's water level and rainfall conditions.

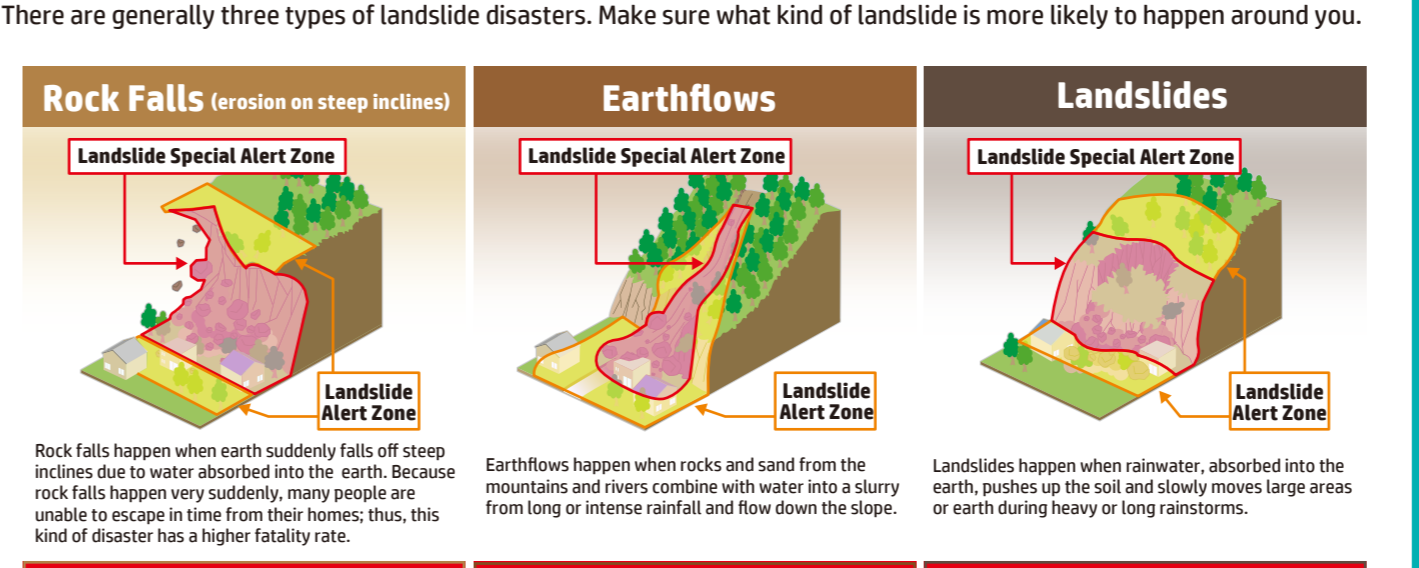
Water Level	Evacuation Order	Yateno River (Yatabashi)	Yateno River (Omaya)	Fukuda River (Amibashi)	Sanotani River (Deabashi)	Kanbanihori River (Hashiyama-bashi)	Ukawa River (Ukawa)
Flood Threat Level Flooding is likely	Level 4 Warning	3.6m	2.8m	1.8m	2.1m	1.5m	2.6m
Evacuation Advisory Level Consider evacuating	Level 3 Warning	2.6m	2.0m	1.5m	1.6m	1.3m	2.1m
Flood Caution Level Flood Prevention Teams are dispatched	No Order Issued	2.6m	2.0m	1.5m	1.6m	1.3m	2.1m
Flood Prevention Teams on Standby	No Order Issued	2.0m	1.5m	1.0m	1.2m	1.0m	1.5m
Normal Level	No Order Issued						

Watch Out for Landslides

Landslide (Special) Alert Zones

Landslide Alert Zones (Yellow Zones) are... Areas where there is a potential threat to the residents' lives or wellbeing in the event of a landslide. The City will inform you about any threat and have evacuation procedures in place to avoid danger.

Landslide Special Alert Zones (Red Zones) are... Areas that are recognized to bring about considerable damages to infrastructure and pose an exceptional threat to the residents' lives and physical wellbeing in the event of a landslide. For these areas, special permission is required to develop in the area and regulations for building structures are put in place.



Tips to Protect Yourself from Landslides

1. Check if the area where you live is a Landslide (Special) Alert Zone.
2. Pay attention to landslide warnings once heavy rain begins to fall.
3. If you feel that you are in danger, evacuate beforehand as soon as possible.

Warning Signs

- Small rocks fall from the cliff
- Cracks appear on the face of the cliff
- Water suddenly flows out of the cliff
- Rumbling sounds from the mountain
- Noisy rivers and trees drifting in water
- River level down even when raining
- Cracks form on face of the slope
- Water flows out from the cliff or slope
- Water from the well is murky

Evacuate to an upper floor (2nd floor and above) away from the cliff. If you cannot, then... **Get to the farthest room away from the cliff.**

What are Landslide Advisories? Landslide advisories are released by both prefectural and local meteorological observatories during heavy rainstorms when landslide risk significantly increases. If a landslide advisory has been issued, please stay on alert for any potential landslides and evacuate somewhere safe. Even if a landslide advisory has not been issued, stay diligent and pay attention to any warning signs so you are prepared to evacuate before it happens.

Kyoto Prefecture releases **Landslide Advisory Information** on their website. You can check the information here (Japanese) <https://d-keikai.pref.kyoto.jp/>

Let's Stay in the Loop!

The City will issue and relay evacuation warnings to all residents as illustrated in the figure below. There are ways for the City to directly inform every resident and ways to obtain detailed information from the TV and the internet. Stay in the loop and get to safety well before disaster strikes.

Information Pathway

Kyotango City Disaster Countermeasure HQ
Level 5 Warning
Level 4 Warning
Level 3 Warning

Emergency P.A. System
Text Message
Local Cable Channel 11
City Website
Media Outlets (TV/Radio)

Kyotango City Residents

Where to Get Information by Text

When the City releases evacuation orders, you can receive emergency text notifications not only from your cellphone service provider, but also from the City's official LINE account or Kyoto Prefecture when you register beforehand. Please sign up to receive emergency notifications.

- **Kyotango City's Official LINE**
On Kyotango City's Official LINE Account, the City sends out information regarding disasters, criminal activity, childcare, scheduled programming for the cable channel, lectures, events, and much more!
Please add us as your friend!
LINE ID @kyotangocity
- **Kyotango Prefectural Disaster and Crime Prevention Text Notification System**
You will get text notifications about weather, disaster prevention, and criminal activity.
How to Sign Up
Send an email to en@kaiji.yokoyama.lg.jp (no body necessary)
An automatic response email will arrive in your inbox. Open the email and follow the instructions to register. Scan the QR code to send an email.
- **Emergency P.A. System - In-house Receiver**
From the receiver, you can get alerts about weather conditions, earthquakes, fires, and other broadcasted notifications from City Hall. The City will provide one receiver for free per household. Please inquire to your nearest Town Hall to install one in your home. If you would like more receivers, please purchase them separately.

For Kyotango City Residents

- **Where to Get Information from the Internet**
Kyotango City Website Check the most up-to-date information here. (Japanese translation services available)
<https://www.city.kyotango.lg.jp/>
- **Kyoto Emergency Management Website**
View open evacuation sites and evacuation situations here (Japanese only)
https://www.bousai.pref.kyoto.lg.jp/dis_portal/
- **Japan Meteorological Agency (Kikikuru)** Check for Flood and Landslide Disaster Probability Maps here
<https://www.jma.go.jp/bosai/risk/>
- **River Disaster Prevention Information**
Check for water level information for rivers and streams all over Japan (English available)
<https://www.river.go.jp/>

Emergency Phone Numbers	Organization	Phone Number	Organization	Contact
	Kyotango City Hall	0772-69-0001 (24 hours)	Multilingual Disaster Support Center (Kyotango City International Association)	kokusaik_kyoyu@kyotango.net
	Kyotango City Fire & Emergency Dept. HQ	0772-69-0110 (24 hours)	Embassy of Home Country	(Please contact the embassy or other method of contact)
	Kyotango City Water & Sewer Dept.	0772-69-0119 (24 hours)		
		0772-69-0580		

Let's Evacuate Safely

Evacuation 101

To prepare for a disaster, stock up your emergency supplies and talk about your action plan on a daily basis.

Evacuate Swiftly and Accordingly!

Even before the City issues a warning, assess the situation around you and evacuate if necessary.

Leave a Note for your Family!

If your family members are out of the house, it's a good idea to leave a note for them to let them know where you are going to evacuate.

Carry an Evacuation Tag with your Emergency Contact Information on you!

Write out an Evacuation Tag, especially for your elderly and children, with their name, address, and emergency contact and have them carry it while evacuating.

Help Each Other as a Group!

Avoid moving alone and get together with your neighbors to decide where to evacuate.

Refrain from Evacuating by Car!

Cars have difficulty moving forward in floodwater about 30 cm deep. If you are evacuating by car, do so before your surroundings flood over.

Take the Safe Route!

Avoid going alongside rivers and mountains and take the widest, safest path to evacuate.

Prepare your Emergency Kit in Advance!

Put your emergency supplies into a backpack, so you can use both hands freely when evacuating.

Follow the Staff's Directions at the Evacuation Site!

Tell the staff your name and address when you get to the evacuation site.

Horizontal & Vertical Evacuation

Evacuating before anything happens is very important during a natural disaster. However, if danger is approaching and evacuation routes are already flooded, please avoid taking any unreasonable or dangerous action to try to evacuate. In these sorts of situations, you do not have to move to another location (horizontal evacuation), but you can also move upwards to a higher floor of a building or the second floor of your home (vertical evacuation) and wait for rescue.

Evacuate as quickly as possible to the evacuation site (horizontal evacuation)

Evacuate to higher ground (vertical evacuation)

For People with Special Needs

Generally, the elderly, people with disabilities, infants, pregnant women, and foreigners who do not speak Japanese are considered groups of people who need special accommodations when a natural disaster strikes. Please work together with the people in your community to make sure everyone is safe and quickly go to an evacuation site.

- **Sick & Elderly People**
During an emergency, carry them on your back and escort them to safety. Have multiple people look after them.
- **Visually-Impaired People**
Call out to them to relay information. If you are guiding them, do not take the hand holding their cane. Ask them to lightly hold onto your elbow and walk slowly while keeping a half a step ahead of them.
- **Physically-Impaired People (Wheelchair)**
Two people are required to move them up or down stairs. Face the wheelchair forward when going up, and backwards when going down.
- **People who are Hard-of-Hearing**
Move your mouth clearly when speaking so they can read your lips. Communicate accurate information through sign language, writing, or gestures.