

Seismic Intensity (shindo) Scale

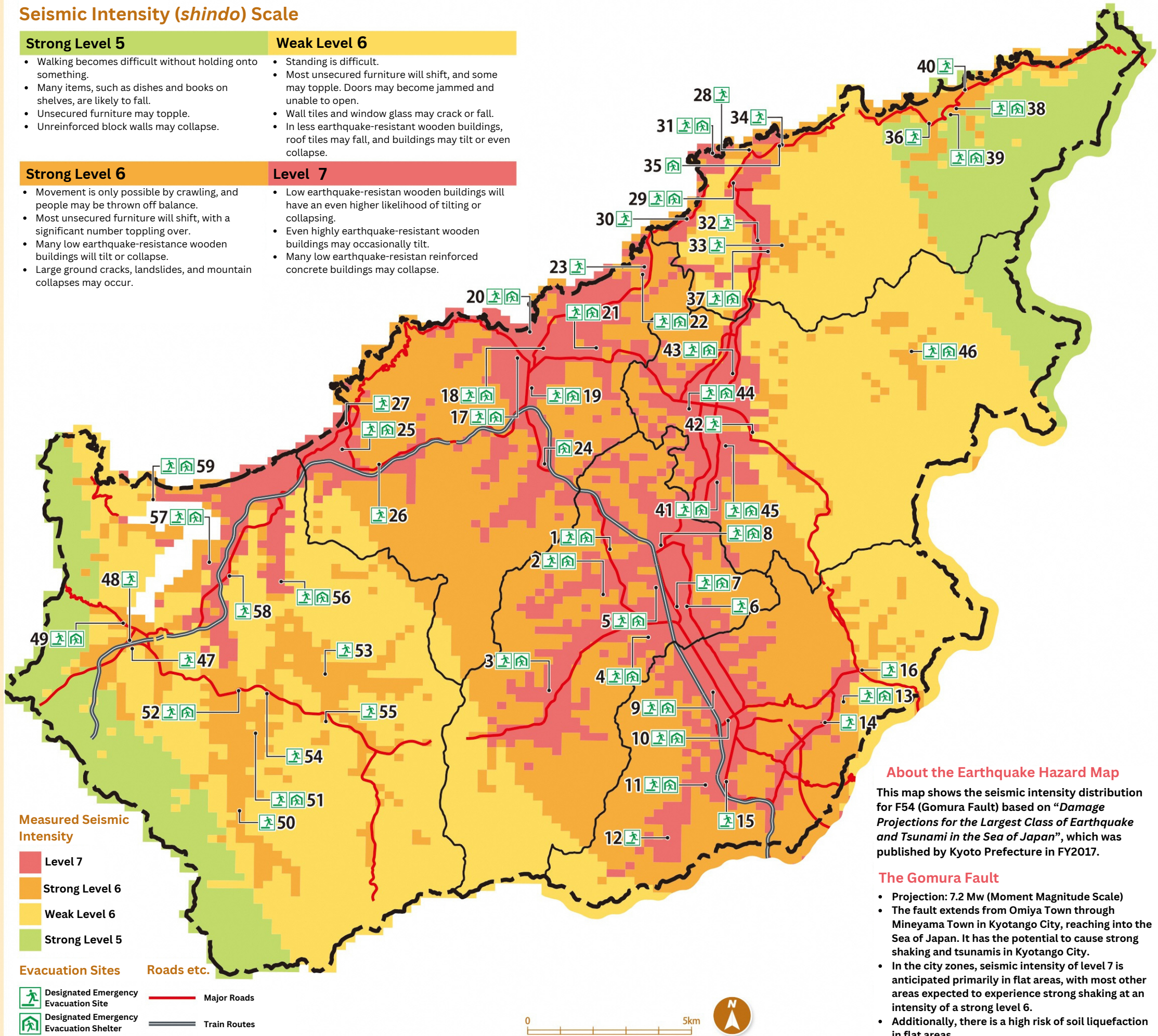
- Strong Level 5**

 - Walking becomes difficult without holding onto something.
 - Many items, such as dishes and books on shelves, are likely to fall.
 - Unsecured furniture may topple.
 - Unreinforced block walls may collapse.
- Weak Level 6**

 - Standing is difficult.
 - Most unsecured furniture will shift, and some may topple. Doors may become jammed and unable to open.
 - Wall tiles and window glass may crack or fall.
 - In less earthquake-resistant wooden buildings, roof tiles may fall, and buildings may tilt or even collapse.
- Strong Level 6**

 - Movement is only possible by crawling, and people may be thrown off balance.
 - Most unsecured furniture will shift, with a significant number toppling over.
 - Many low earthquake-resistance wooden buildings will tilt or collapse.
 - Large ground cracks, landslides, and mountain collapses may occur.
- Level 7**

 - Low earthquake-resistant wooden buildings will have an even higher likelihood of tilting or collapsing.
 - Even highly earthquake-resistant wooden buildings may occasionally tilt.
 - Many low earthquake-resistant reinforced concrete buildings may collapse.



Anticipated Earthquake Gomura Fault Earthquake

Designated Earthquake Evacuation Sites Shelters

No	Type	Place Name	Location	Phone
1	Shelter	Mineyama ES (Gym)	Mineyamacho Fudan 1	62-0077
2	Shelter	Isanago ES (Gym)	Mineyamacho Yasu 9	62-0335
3	Shelter	Goka Gymnasium	Mineyamacho Goka 1	—
4	Shelter	Nagaoka ES (Gym)	Mineyamacho Nagaoka 60	62-0210
5	Shelter	Mineyama JHS (Gym)	Mineyamacho Arayama 88	62-0359
6	Shelter	Arayama Ward Community Hall	Mineyamacho Arayama 1255	62-8101
7	Shelter	Shinzan ES (Gym)	Mineyamacho Arayama 1300	62-0730
8	Shelter	Tanba Gymnasium	Mineyamacho Tanba 560	—
9	Shelter	Omiya Daiichi ES (Gym)	Omiyacho Suki 1552	64-2133
10	Shelter	Omiya JHS (Gym)	Omiyacho Kuchiono 216	64-2201
11	Shelter	Omiya Minami ES (Gym)	Omiyacho Okuono 72	64-2234
12	Shelter	Kamitsuneyoshi Community Hall	Omiyacho Kamitsuneyoshi 1239	64-3018
13	Shelter	Omiya Daisan Gymnasium	Omiyacho Morimoto 782	—
14	Shelter	Morimoto Community Hall	Omiyacho Morimoto 1399-1	68-9393
15	Shelter	Taniuchi Community Hall	Omiyacho Morimoto 1455	64-4338
16	Shelter	Ikaga Main Village Center	Omiyacho Nobutoshi 414-1	66-3375
17	Shelter	Amino Gymnastics Center	Aminocho Amino 418	69-0663
18	Shelter	Amino JHS (Gym)	Aminocho Amino 2696	72-1030
19	Shelter	Amino Minami ES (Gym)	Aminocho Shimooka 180	72-0966
20	Shelter	Amino Kita ES (Gym)	Aminocho Asamogawa 1861	72-0967
21	Shelter	Shimazu ES (Gym)	Aminocho Shimazu 1251	72-0149
22	Shelter	Mitsu Gym (Former Mitsu ES)	Aminocho Mitsu 27	—
23	Shelter	Mitsu Kumin Center	Aminocho Mitsu 869	72-0032
24	Shelter	Go Gymnasium	Aminocho Go 48	—
25	Shelter	Tachibana ES (Gym)	Aminocho Kitsu 1357	74-0056
26	Shelter	Tachibana Hall	Aminocho Kitsu 826	74-0047
27	Shelter	Hamazume Kumin Center	Aminocho Hamazume 45	74-0009
28	Shelter	Kyotango City Hall Tango Branch	Tangocho Taiza 1780	69-0714
29	Shelter	Tango JHS (Gym)	Tangocho Taiza 1780	75-0126
30	Shelter	Sunagata Shuraku Center	Tangocho Taiza 4662	75-0952
31	Shelter	Taiza ES (Gym)	Tangocho Taiza 2691	75-0049
32	Shelter	Miyake Seikatsu Kaizen Center	Tangocho Miyake 23	75-0784
33	Shelter	Koreyasu Center	Tangocho Koreyasu 12	—
34	Shelter	Takano Community Center	Tangocho Takano 1026	—
35	Shelter	Takano Gymnasium	Tangocho Takano 564	—
36	Shelter	Hei Jumin Center	Tangocho Hei 523	76-0446
37	Shelter	Toyosaka ES (Gym)	Tangocho Joganji 1727	75-0029
38	Shelter	Ukawa ES (Gym)	Tangocho Ueno 120	76-0831
39	Shelter	Ukawa Gymnasium	Tangocho Ueno 120	—
40	Shelter	Kyuso Community Center	Tangocho Kyuso 1052-1	—
41	Shelter	Yoshino Gymnasium	Yasakacho Imono 408	65-2408
42	Shelter	Mizotani Gymnasium	Yasakacho Mizotani 168	—
43	Shelter	Kurobe Gymnasium	Yasakacho Kurobe 3299	—
44	Shelter	Yasaka ES (Gym)	Yasakacho Kibashi 558	65-2007
45	Shelter	Yasaka JHS (Gym)	Yasakacho Mizotani 3301-1	65-2554
46	Shelter	Noma Main Village Center	Yasakacho Nonaka 2245	66-0002
47	Shelter	Kumihama JHS (Gym)	Kumihamacho 640	82-0079
48	Shelter	Kyotango City Hall Kumihama Branch	Kumihamacho 814	69-0716
49	Shelter	Kumihama ES (Gym)	Kumihamacho 3369	82-0021
50	Shelter	Kawakami Gymnasium	Kumihamacho Hata 394	—
51	Shelter	Koryu ES (Gym)	Kumihamacho Niidani 250	85-0220
52	Shelter	Kaibe Gymnasium	Kumihamacho Hashizume 236	—
53	Shelter	Kumi no Kai Welfare Center	Kumihamacho Takefuji 40	84-0759
54	Shelter	Koryu Nursery School	Kumihamacho Nagadome 246-6	84-0221
55	Shelter	Sano Gymnasium	Kumihamacho Anyoji 581	—
56	Shelter	Tamura Gymnasium	Kumihamacho Seki 495	—
57	Shelter	Kabutoyama ES (Gym)	Kumihamacho Kanzaki 1603	83-0204
58	Shelter	Kabutoyama Nursery School	Kumihamacho Urake 570-1	83-2177
59	Shelter	Minato Gymnasium	Kumihamacho Minatomiya 1655-5	—

About the Earthquake Hazard Map

This map shows the seismic intensity distribution for F54 (Gomura Fault) based on “Damage Projections for the Largest Class of Earthquake and Tsunami in the Sea of Japan”, which was published by Kyoto Prefecture in FY2017.

The Gomura Fault

- Projection: 7.2 Mw (Moment Magnitude Scale)
- The fault extends from Omiya Town through Mineyama Town in Kyotango City, reaching into the Sea of Japan. It has the potential to cause strong shaking and tsunamis in Kyotango City.
- In the city zones, seismic intensity of level 7 is anticipated primarily in flat areas, with most other areas expected to experience strong shaking at an intensity of a strong level 6.
- Additionally, there is a high risk of soil liquefaction in flat areas.